

UL TEST REPORT AND PROCEDURE

Standard:	UL 60950-1, 2nd Edition, 2014-10-14 (Information Technology Equipment - Safety - Part 1: General Requirements) CAN/CSA C22.2 No. 60950-1-07, 2nd Edition, 2014-10 (Information Technology Equipment - Safety - Part 1: General Requirements)
Certification Type:	Listing
CCN:	QQGQ, QQGQ7 (Power Supplies for Information Technology Equipment Including Electrical Business Equipment)
Product:	ITE POWER SUPPLY
Model:	GT-46240-WWVV-X.X-TZ WW is the standard output wattage, with a maximum value of 24. VV is the standard rated output voltage designation, with a value of 12, 15 and 24. -X.X denote the output voltage differentiator, subtracting volts from standard output voltage, which is blank. Z can be 3 or 3A, 3 means C14 inlet type, 3A means C6 inlet type.
Rating:	I/P: 1) 100-240Vac , 50-60Hz, 0.6A (For all models) O/P: See Miscellaneous 7-01 for details.
Applicant Name and Address:	GLOBTEK (HONG KONG) LTD UNIT 1402, BENSON TOWER 74 HUNG TO RD KWUN TONG KOWLOON HONG KONG

This is to certify that representative samples of the products covered by this Test Report have been investigated in accordance with the above referenced Standards. The products have been found to comply with the requirements covering the category and the products are judged to be eligible for Follow-Up Service under the indicated Test Procedure. The manufacturer is authorized to use the UL Mark on such products which comply with this Test Report and any other applicable requirements of UL LLC ('UL') in accordance with the Follow-Up Service Agreement. Only those products which properly bear the UL Mark are considered as being covered by UL's Follow-Up Service under the indicated Test Procedure.

The applicant is authorized to reproduce the referenced Test Report provided it is reproduced in its entirety.

Any information and documentation involving UL Mark services are provided on behalf of UL LLC (UL) or any authorized licensee of UL.

Prepared by: Nat Liu/ Amos Chen

Reviewed by: Kyle Lin

Supporting Documentation

The following documents located at the beginning of this Procedure supplement the requirements of this Test Report:

- A. Authorization - The Authorization page may include additional Factory Identification Code markings.
- B. Generic Inspection Instructions -
 - i. Part AC details important information which may be applicable to products covered by this Procedure. Products described in this Test Report must comply with any applicable items listed unless otherwise stated in the body of this Test Report.
 - ii. Part AE details any requirements which may be applicable to all products covered by this Procedure. Products described in this Test Report must comply with any applicable items listed unless otherwise stated in the body of each Test Report.
 - iii. Part AF details the requirements for the UL Certification Mark which is not controlled by the technical standard used to investigate these products. Products are permitted to bear only the Certification Mark(s) corresponding to the countries for which it is certified, as indicated in each Test Report.

Product Description

Electronic components are mounted on PWB and housed in plastic enclosure secured by ultrasonic welding.

Model Differences

All models are same except secondary winding of transformer (T1), transistor (Q1), heat sink (HS2) and output rating.

See Miscellaneous 7-01 for details.

Technical Considerations

- Equipment mobility : movable/transportable
- Connection to the mains : pluggable A
- Operating condition : continuous
- Access location : operator accessible
- Over voltage category (OVC) : OVC II
- Mains supply tolerance (%) or absolute mains supply values : +10%, -10%
- Tested for IT power systems : No
- IT testing, phase-phase voltage (V) : N/A
- Class of equipment : Class I (earthed)
- Considered current rating of protective device as part of the building installation (A) : 20A
- Pollution degree (PD) : PD 2
- IP protection class : IP X0
- Altitude of operation (m) : Up to 2000 meters
- Altitude of test laboratory (m) : less than 2000 meters
- Mass of equipment (kg) : Approx. 0.14
- The product was submitted and evaluated for use at the maximum ambient temperature (Tma) permitted by the manufacturer's specification of: 40°C
- The means of connection to the mains supply is: Detachable power cord, Pluggable A
- The product is intended for use on the following power systems: TN

- The equipment disconnect device is considered to be: Appliance inlet
- The product was investigated to the following additional standards:
- The following accessible locations (with circuit/schematic designation) are within a limited current circuit: Secondary side of CY1, CY2
- The following circuit locations (with circuit/schematic designation) were investigated as a limited power source (LPS): output port
- The following are available from the Applicant upon request: Installation (Safety) Instructions / Manual

Additional Information

N/A

Markings and instructions

Clause Title	Marking or Instruction Details
Power rating - Ratings	Ratings (voltage, frequency/dc, current)
Power rating - Model	Model Number
Power rating - Company identification	Listee's or Recognized company's name, Trade Name, Trademark or File Number
Fuses - Rating	Rated current and voltage and type located on or adjacent to fuse or fuseholder.
LPS Marking (Optional)	Marked "LPS" or "Limited Power Source".

Special Instructions to UL Representative

Inspect the transformer(s) listed in Production-Line Testing Requirements per AA1.1 - (C). When the tests are conducted at other location, inspect test record and specification sheet provided by the component manufacturer. Verify the specification sheet indicates 100% routine test specified in Production-Line Testing Requirements is conducted at the component manufacturer. The test record noted above shall be submitted to the manufacturer from transformer manufacturer. The test record can be in the form of an actual test record. A stamp or sticker on the transformer or other method verifying the routine test is being completed on 100% production is also acceptable.

Production-Line Testing Requirements						
<u>Electric Strength Test Special Constructions - Refer to Generic Inspection Instructions, Part AC for further information.</u>						
Model	Component	Removable Parts	Test probe location	V rms	V dc	Test Time, s
All models in this report	Transformer T1	N/A	Primary to Secondary	300 0	4242	1
<u>Earthing Continuity Test Exemptions - This test is not required for the following models:</u>						
No exemption.						
<u>Electric Strength Test Exemptions - This test is not required for the following models:</u>						
No exemption.						
<u>Electric Strength Test Component Exemptions - The following solid-state components may be disconnected from the remainder of the circuitry during the performance of this test:</u>						
N/A						
<u>Sample and Test Specifics for Follow-Up Tests at UL</u>						
Model	Component	Material	Test	Sample(s)	Test Specifics	
N/A	--	--	--	--	--	

1.5.1	TABLE: list of critical components					Pass
Object/part or Description	Manufacturer/ trademark	type/model	technical data	Product Category CCN(s)	Required Marks of Conformity	Supplement ID
01. Enclosure	SABIC INNOVATIVE PLASTICS	SE1X(GG)(f1)	Two pieces construction, secured together by ultrasonic welding, rated V-1 or better, 130 degree C min. Minimum 2.0 mm thickness. See Enclosure/Diagram ID 4-01 for dimensions	QMFZ2	UL	
02. Appliance Inlet (for GT-46240-WWVV-X.X-T3) (C14 type)	TECX-UNIONS TECHNOLOGY CORP	TU-301-SP	Rated 250 V, 15 A, 105 degree C min.	AXUT2	UL	
02a. Appliance Inlet (alternate) (GT-46240-WWVV-X.X-T3) (C14 type)	SUN FAIR ELECTRIC WIRE & CABLE (HK) CO LTD	S-03	Rated 250 V, 10 A, 75 degree C min.	AXUT2	UL	
02b. Appliance Inlet (alternate) (for GT-46240-WWVV-X.X-T3) (C14 type)	ZHEJIANG LECI ELECTRONICS CO LTD	DB-14	Rated 250 V, 15 A, 75 degree C min.	AXUT2	UL	
02c. Appliance Inlet (alternate) (for GT-46240-WWVV-X.X-T3) (C14 type)	ZHE JIANG BEI ER JIA ELECTRONIC CO LTD	ST-A01-003J	Rated 250 V, 10 A, 75 degree C min.	AXUT2	UL	
02-1. Appliance Inlet (for GT-46240-WWVV-X.X-T3A) (C6 type)	TECX-UNIONS TECHNOLOGY CORP	TU-333	Rated 250 V, 2.5 A, 105 degree C min.	AXUT2	UL	
02-1a. Appliance Inlet (alternate) (for GT-46240-WWVV-X.X-T3A) (C6 type)	SUN FAIR ELECTRIC WIRE & CABLE (HK) CO LTD	S-02	Rated 250 V, 2.5 A, 75 degree C min.	AXUT2	UL	
02-1b. Appliance Inlet (alternate) (for GT-46240-WWVV-X.X-T3A) (C6 type)	ZHEJIANG LECI ELECTRONICS CO LTD	DB-6	Rated 250 V, 2.5 A, 75 degree C min.	AXUT2	UL	

02-1c. Appliance Inlet (alternate) (for GT-46240-WWVV-X.X-T3A) (C6 type)	ZHE JIANG BEI ER JIA ELECTRONIC CO LTD	ST-A04-002	Rated 250 V, 2.5 A, 75 degree C min.	AXUT2	UL	
03. Fuse (F1)	Various	Various	Listed, T1.6A, 250Vac	JDYX	UL	
03a. Fuse (F1) (Alternate)	Conquer Electronics Co Ltd	MST	Rated T1.6A, 250Vac.	JDYX2	UL	
03b. Fuse (F1) (Alternate)	Ever Island Electric Co Ltd & Walter Electric	2010	Rated T1.6A, 250Vac.	JDYX2	UL	
03c. Fuse (F1) (Alternate)	COOPER BUSSMANN LLC	SS-5	Rated T1.6A, 250Vac.	JDYX2	UL	
03d. Fuse (F1) (Alternate)	Bel Fuse Inc	RST	Rated T1.6A, 250Vac.	JDYX2	UL	
03e. Fuse (F1) (Alternate)	HOLLYLAND CO LTD	5ET	Rated T1.6A, 250Vac.	JDYX2	UL	
03f. Fuse (F1) (Alternate)	LITTELFUSE WICKMANN WERKE	392	Rated T1.6A, 250Vac.	JDYX2	UL	
04. X-Capacitor (CX1)	Cheng Tung Industrial Co Ltd	CTX	Rated max 0.22 uF, min 250 V, X1 or X2 type, 100 degree C. (Compliance with IEC 60384-14)	FOWX2	UL	
04a. X-Capacitor (CX1) (Alternate)	Tenta Electric Industrial Co Ltd	MEX	Rated max 0.22uF, min 250 V, X1 or X2 type, 100 degree C. (Compliance with IEC 60384-14)	FOWX2	UL	
04b. X-Capacitor (CX1) (Alternate)	Ultra Tech Xiphi Enterprise Co Ltd	HQX	Rated max 0.22 uF, min 250 V, X1 or X2 type, 100 degree C. (Compliance with IEC 60384-14)	FOWX2	UL	
04c. X-Capacitor (CX1) (Alternate)	CARLI ELECTRONICS CO LTD	MPX	Rated max 0.22uF, min 250 V, X1 or X2 type, 100 degree C. (Compliance with IEC 60384-14)	FOWX2	UL	
04d. X-Capacitor (CX1) (Alternate)	JOEY ELECTRONICS (DONG GUAN) CO	MPX	Rated max 0.22uF, min 250 V, X1 or X2 type, 105 degree C. (Compliance with IEC 60384-	FOWX2	UL	

	LTD		14)			
04e. X-Capacitor (CX1) (Alternate)	XIANGTAI ELECTRONIC (SHENZHEN) CO LTD	MKP/MPX	Rated max 0.22uF, min 250 V, X1 or X2 type, 110 degree C. (Compliance with IEC 60384- 14)	FOWX2	UL	
05. Bleeder Resistors (R1, R2)	--	--	Max. 2.2Mohs, min. 1/4W	--	--	
06. Bridge Diode (BD1)	--	--	Rated 2A, minimum 1000 V.	--	--	
07. Storage Capacitor (C1)	--	--	Rated 400 V, max. 47uF, min. 105 degree C, provided with integral pressure relief	--	--	
08. Transistor (Q1) (for GT-46240-2412-TZ, GT- 46240-2424-TZ)	Various	Various	Rated 4-10 A, minimum 600 V.	--	--	
08a. Transistor (Q1) (Alternate) (for GT- 46240-2415-TZ)	Various	Various	Rated 4-10 A, minimum 650 V.	--	--	
09. Bridge Capacitors (CY1,CY2) (optional)	Success Electronics Co Ltd	SE, SB	CY1 rated max. 470pF, CY2 rated max. 220pF, min. 250 Vac, 125 degree C, Y1 type. (Compliance with IEC 60384- 14)	FOWX2	UL	
09a. Bridge Capacitors (CY1,CY2) (optional) (Alternate)	TDK-EPC CORPORATION	CD	CY1 rated max. 470pF, CY2 rated max. 220pF, min. 250 Vac, 125 degree C, Y1 type. (Compliance with IEC 60384- 14)	FOWX2	UL	
09b. Bridge Capacitors (CY1,CY2) (optional) (Alternate)	Walsin Technology Corp	AH	CY1 rated max. 470pF, CY2 rated max. 220pF, min. 250 Vac, 125 degree C, Y1 type. (Compliance with IEC 60384- 14)	FOWX2	UL	
09c. Bridge Capacitors (CY1,CY2) (optional) (Alternate)	Haohua Electronic Co	CT 7	CY1 rated max. 470pF, CY2 rated max. 220pF, min. 250 Vac, 125 degree C, Y1 type. (Compliance with IEC 60384- 14)	FOWX2	UL	

09e. Bridge Capacitors (CY1,CY2) (optional) (Alternate)	XIANGTAI ELECTRONIC (SHENZHEN) CO LTD	YOB YOF YOE	CY1 rated max. 470pF, CY2 rated max. 220pF, min. 250 Vac, 125 degree C, Y1 type. (Compliance with IEC 60384-14)	FOWX2	UL	
09f. Bridge Capacitors (CY1,CY2) (optional) (Alternate)	JUHONG ELE CO	JB	CY1 rated max. 470pF, CY2 rated max. 220pF, min. 250 Vac, 125 degree C, Y1 type. (Compliance with IEC 60384-14)	FOWX2	UL	
10. Optical Isolator (PC1)	Lite-On Technology Corp	LTV-817	Isolation: 5000 Vac, minimum 100 degree C.	FPQU2	UL	
10a. Optical Isolators (PC1) (Alternate)	Everlight Electronics Co Ltd	EL817	Isolation: 5000 Vac, minimum 110 degree C.	FPQU2	UL	
10b. Optical Isolators (PC1) (Alternate)	COSMO ELECTRONICS CORP	K1010	Isolation voltage minimum 5000 Vac, minimum 115 degree C.	FPQU2	UL	
10c. Optical Isolators (PC1) (Alternate)	BRIGHT LED ELECTRONICS CORP	BPC-817XXXXXX, BPC-817MXXXXXX, BPC-817SXXXXXX, where XXXXXX can be any alphanumeric character or blank.	Isolation voltage minimum 5000 Vac, minimum 100 degree C.	FPQU2	UL	
10d. Optical Isolators (PC1) (Alternate)	RENESAS ELECTRONICS CORPORATION	PS2561-1	Isolation voltage minimum 5000 Vac, minimum 100 degree C.	FPQU2	UL	
11. Line filter (NF1) (Optional)	Various	NF00103	Open type construction. Rated 105 degree C. See Enclosure / Diagram ID 4-02 for construction details.	--	--	
11a Core	Various	Various	Ferrite, overall measured overall 15.5 mm by 10.3mm by	--	--	

			2.5mm			
11b Coil	Various	Various	Rated minimum 105 degree C.	OBMW2	UL	
12. Transformer (T1) (for GT-46240-2412-TZ, GT-46240-2415-TZ)		XF00956	Class B, See Enclosure / Diagram ID 4-03 for construction details.	--	--	
12a. Transformer (T1) (Alternate) (for GT-46240-2424-TZ)		XF00957	Class B, See Enclosure / Diagram ID 4-04 for construction details.	--	--	
12-01. Insulation system for Transformer (T1)		130-1	Insulation system Class B (130 degree C, adapted form GREAT LEOFLON INDUSTRIAL CO LTD, Type GH-130)	OBJY2	UL	
12-02. Core	--	--	EE type, Ferrite, See Enclosure / Diagram ID 4-03, 4-04 for construction details.	--	--	
12-03. Coil	--	--	130 degree C	OBMW2	UL	
12-04. Bobbin	Chang Chun Plastics Co., Ltd.	T375J	V-0, 150degree C, Phenolic, thickness 0.8mm minimum	QMFZ2	UL	
12-04a. Bobbin (Alternate)	SUMITOMO BAKELITE CO LTD	PM-9820	V-0, 150degree C, Phenolic, thickness 0.71mm minimum	QMFZ2	UL	
12-05. Tubing/Sleeving	Great Holding Industrial Co. Ltd.	TFL, TFS, TFT	Rated 200 degree C, VW-1, 600V max.	YDPU2	UL	
12-06. Triple Insulated Wire	Great Leoflon Industrial Co. Ltd.	TRW(B)	130 degree C	OBJT2	UL	
12-07. Varnish	John C. Dolph Co.	BC-346A	Rated minimum 200 degree C.	OBOR2	UL	
12-07a. Varnish (Alternate)	Elantas Electrical Insulation Elantas Pdg Inc	V1630FS	Rated minimum 130 degree C.	OBOR2	UL	
12-08. Insulation Tape	3M Company	1350F-1	130 degree C.	OANZ2	UL	
13. Internal Glue Materials	--	--	Rated V-2 minimum.	QMFZ2	UL	
14. Internal Plastic Part Materials	--	--	Rated minimum V-2.	QMFZ2	UL	
15. Strain Relief Of Output Cord	Various	Various	Minimum 300 V, 80 degree C, maximum 3.05 m, marked VW-1 or FT-1. Suitable for external	QMFZ2	UL	

			use. Refer to Enclosure/Diagram 4-05 for strain relief dimension details.			
16. PWB	Various	Various	V-0 or better, minimum 130 degree C.	ZPMV2	--	
17. Label	Various	Various	Minimum 70 degree C. if maximum surface temperature not specified.	PGDQ2, PGJI2	UL	
18. Heat Sink (HS1) (Consideration as Primary)	Various	Various	Aluminum, minimum 2.0 mm thick. See Enclosure ID 4-06 for detailed dimensions.	--	--	
19. Heat Sink (HS2) (Consideration as Secondary) (for GT-46240-2412-TZ, GT-46240-2415-TZ)	Various	Various	Aluminum, minimum 1.0 mm thick. See Enclosure ID 4-07 for detailed dimensions.	--	--	
20. Current sense resistor (R10)	--	--	0.91 ohm, 1W.	--	--	
21. Bonding wire	Interchangeable	Interchangeable	Green / yellow lead used. FEP, PTFE, PVC, TFE neoprene, polyimide or marked VW-1; min. 18 AWG, min. 80 degree C, min. 300V. One end soldered to secondary side of PWB, the other end hook and soldered to AC inlet contacts.	AVLV2	UL	
22. Power supply cord (Class I) (Optional)	Various	Various	No. 18 AWG, Detachable, min. 0.5 m max. 4.5 m (14.76 ft.) long, Type SVT or SJT or SPT-2 or NISPT-2 flexible cord. Rated min. 125 V if one end terminated in NEMA 5-15P grounding type attachment plug; rated min. 250 V if one end terminated in NEMA 6-15P grounding type attachment plug, the other end in an	ELBZ or (ZJCZ and RTRT and AXUT)	UL	

Issue Date: 2016-04-07
2016-04-13

Page 11 of 12

Report Reference #

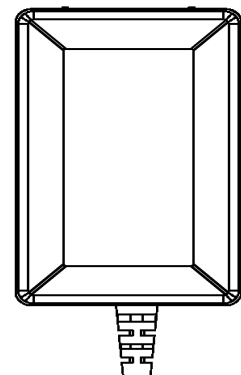
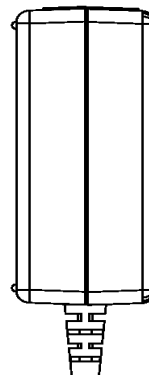
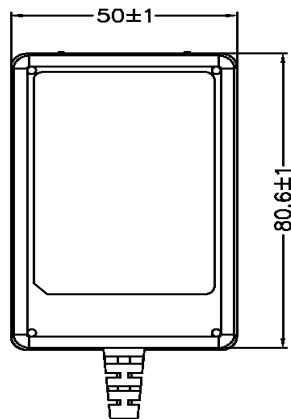
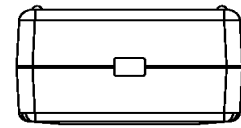
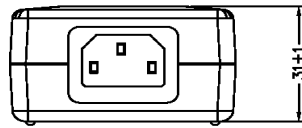
E341351-A87-UL

			appliance coupler			
--	--	--	-------------------	--	--	--



Enclosures

<u>Type</u>	<u>Supplement Id</u>	<u>Description</u>
Diagrams	4-01	Enclosure drawing
Diagrams	4-02	Line filter (NF1)
Diagrams	4-03	Transformer (T1) (for GT-46240-2412-TZ, GT-46240-2415-TZ)
Diagrams	4-04	Transformer (T1) (Alternate) (for GT-46240-2424-TZ)
Diagrams	4-05	Strain Relief Of Output Cord
Diagrams	4-06	Heat Sink, HS1 (Consideration as Primary)
Diagrams	4-07	Heat Sink, HS2 (Consideration as Secondary) (for GT-46240-2412-TZ, GT-46240-2415-TZ)
Schematics + PWB	5-01	PWB Layout
Miscellaneous	7-01	Model Differences

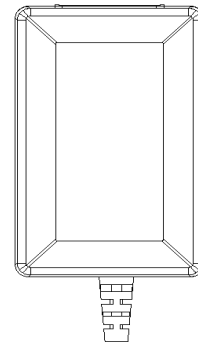
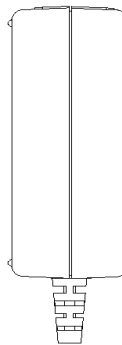
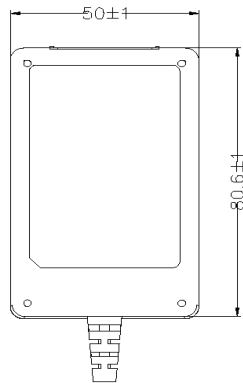
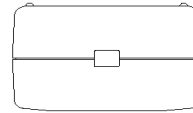
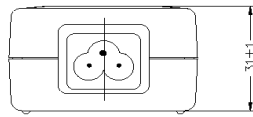
Att.2



TOLERANCE

DESIGNED	CHECKED	APPROVED			TITLE	OUTDRAWING	DATE
			UNITS	mm	DRAWING No.	060211-002	08/02/27
			SCALE				
					060211		01

Att.2



TOLERANCE

DESIGNED	CHECKED	APPROVED			TITLE	DATE
			UNITS	mm	OUTDRAWING	
			SCALE		DRAWING No. 060211	15-FEB-11
					DRAWING NAME 060211	REVISION 01

SPECIFICATION

3. MATERIAL LIST:

ITEM	MATERIAL	SUPPLIER	UL No.
CORE UU9.8	R10K	Acme	
WIRE	UEWN/U	Pacific electric wire & cable co., ltd	E201757
	UEWS/U		
	UEW-4	Jung Shing wire co., ltd	E174837
	UEY-2		
BOBBIN	T375J	CHANG CHUN PLASTCS CO., LTD.	E59481
	PM9820	SUMITOMO BAKELITE	E211989
TAPE	1350F-(#)	3M COMPANY ELECTRICAL PRODUCTS DIV	E17385
	1350T-1		
	370S	BONDTEC PACIFIC CO., LTD	E175868
VARNISH	V1630FS	VIKING PRODUCTS	E75225
	BC-346A	JOHN C. DOLPH. CO.	E317427

DESCRIPTION	CHOKE	Customer P/N	NF00103	DATE	2010/9/7
-------------	-------	--------------	---------	------	----------

RDS041.0307

CONTENT

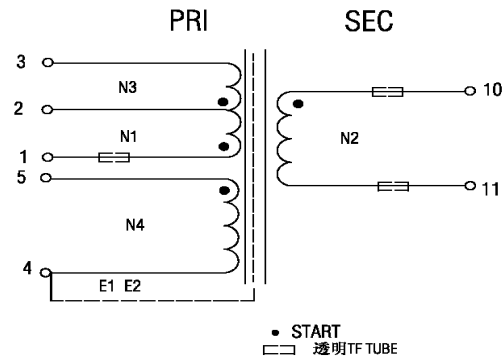
ENG MODEL NO: XF009 56

[illegible]

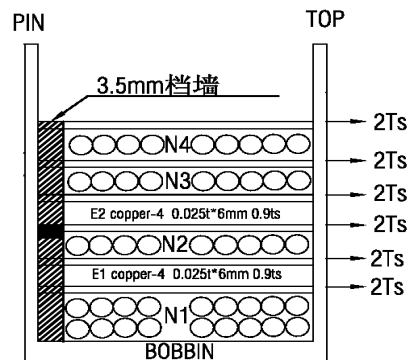
[illegible]

SPECIFICATION

2.SCHEMATIC:



3.WINDING SEQUENCE:



4.WINDING TABLE:

Winding No (组别)	Margin Tape (档墙胶布)	PIN (脚位)	Wire&Wire Copper (线径)	Turns (圈数)	Winding Tape	Tape Layer (胶带层次)	Tube
N1	3.5mm/0	1 - 2	2UEW0.25Ø*1P	50Ts	密绕	2TS	26L*15mm/0
E1	3.5mm/0	Copper-4	0.025t*6mm	0.9TS	背胶	2TS	
N2	3.5mm/0	10 - 11	0.7Ø*1P 三层绝缘线	8Ts	密绕	2TS	20L*11mm 20L*11mm
E2	3.5mm/0	Copper-4	0.025t*6mm	0.9TS	背胶	2TS	
N3	3.5mm/0	2 - 3	2UEW0.25Ø*1P	16TS	密绕	2TS	
N4	3.5mm/0	5 - 4	2UEW0.25Ø*1P	10TS	居中密绕	2TS	

NOTE:

- PIN朝外制作, 首绕组靠PIN端使用3.5mm挡墙。
- N1密绕二层。
- N2密绕一层, 使用三层绝缘。
- N3密绕一层。
- N4密中绕一层。
- E1, E2为内铜箔 (背胶一层反折2mm MIN, 铜箔两端用胶带9mm*21mm REF 加工), 0.025t*6mm*0.9TS, 接引线Ø0.25*1P于PIN4。

DESCRIPTION	TRANSFORMER	CUSTOMER P/N	XF00956	DATE	2015-11-3
APPROVED	周春壬	CHECKED	罗翠华	REPORTED	周春壬

RDS041. 0307

5 of 8

SPECIFICATION

5.ELECTRCAL CHARACTERISTIC:(Fregneucy 10KHz Voltage 0.25V)

TEST CONDITION : TEMPERATURE AT 25°C

TEST POINT	INDUCTANCE(L)	LK	DCR	TEST INSTRUMENT
(1 - 3)	1.65mH±5%	30uH MAX 短路其它绕组		WK--4235

1)HI-POT TEST:(WK-7620)

PRT TO SEC. AC3.75KV/(50/60Hz)/5mA/2sec

PRT TO CORE. AC1.25KV/(50/60Hz)/5mA/2sec

SEC TO CORE. AC1.25KV/(50/60Hz)/5mA/2sec

2)INSULATION TEST:(DC 500V)

BETWEEN PRI. TO SEC.& PRI. TO CORE AND SEC. TO CORE THE RESISTANCE MORE 100M ohm.

底部研磨CORE用3M1350F-1*2L TAPE加工

图1

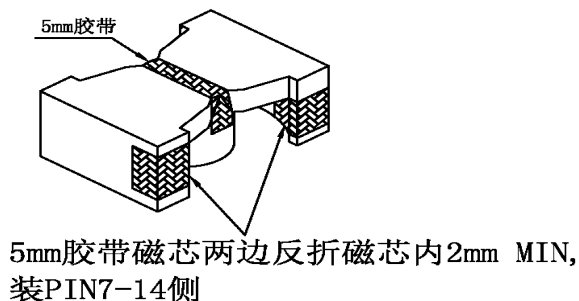
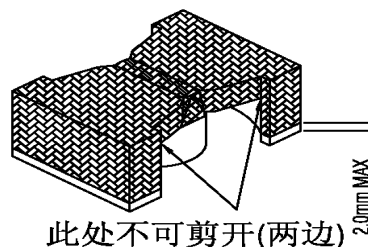


图2



DESCRIPTION	TRANSFORMER	CUSTOMER P/N	XF00956	DATE	2015-11-3
APPROVED	周春壬	CHECKED	罗翠华	REPORTED	周春壬

RDS041. 0307

6 of 8

SPECIFICATION

6.MATERIAL LIST:

ITEM		MATERIAL	SUPPLIER	UL No.	TEMP RATING
1	CORE	PQ2020 TP4 FP2	TDG SHENZHENSHI LICI ELECTRICAL CO.,LTD		
2	BOBBIN	T375J PQ2020 6-8pin 立式	CHANG CHUN PLASTICS CO.,LTD	E59481	150°C
		PM9820 PQ2020 6-8pin 立式	SUMITOMO BAKELITE	E41429	
3	WIRE	TRW(B)	GREAT LEOFLON INDUSTRIAL CO.,LTD	E211989	130°C
		POLYURETHANE ENAMELDCOPPER EIRE UEW-2	WA TAI ELECTROTEHNICA MATERIALS	E243939	
4	TAPE	1350F-1&3M#44 TAPE	3M COMPANY ELECTRICAL PRODUCTS DIV	E17385	130°C
5	VARNISH	V1630FS	P D GEORGE/VIKING	E73071	130°C
		BC-346A	JOHN C.DOLPH.CO	E51047	
6	TUBE	TEFLON TUBE 150V 200°C	GREAT HOLDING INDUSTRIAL CO.,LTD	E156256	200°C
7	COPPER	0.025*6mm+ TAPE	HONG KONG ZHENGEXIANG INDUSTRIAL DEV.LIMITED		
8	Label	Trnsparent dragon Black 25#	GUANG MING YOU TONG PRINTG FACTORY		

DESCRIPTION	TRANSFORMER	Customer P/N	XF00956	DATE	2015-11-3
APPROVED	周春壬	CHECKED	罗翠华	REPORTED	周春壬

RDS041. 0307

7 of 8

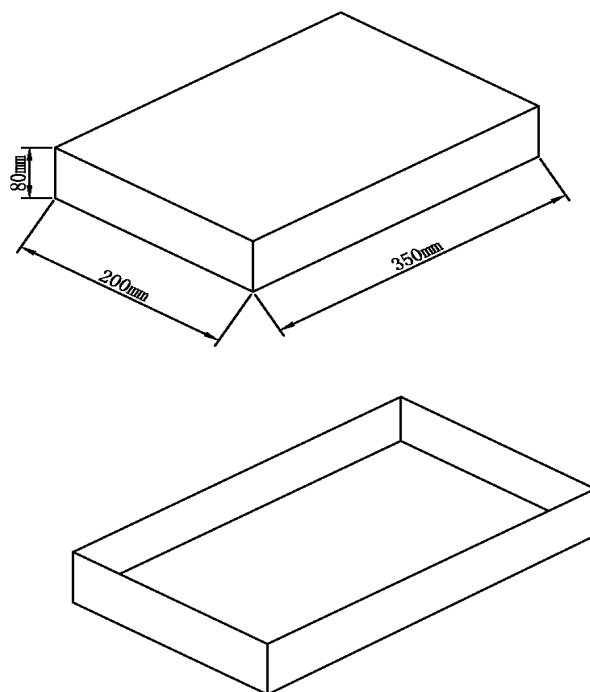
SPECIFICATION

7.PACKING:

1.产品储存条件: AT -20°C to 70°C , 10%RH to 90%RH。

2.产品有效期: 一年。

3.包装规格: 每盒排二层。



DESCRIPTION	TRANSFORMER	Customer P/N	XF00956	DATE	2015-11-3
APPROVED	周春壬	CHECKED	罗翠华	REPORTED	周春壬

RDS041. 0307

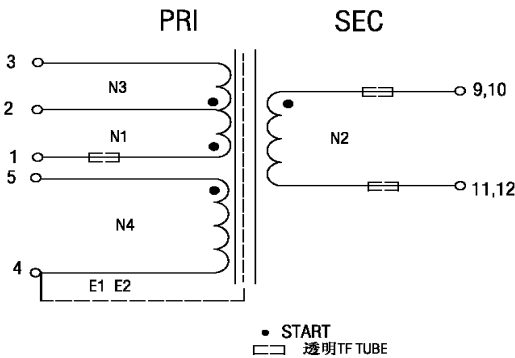
8 of 8

[illegible]

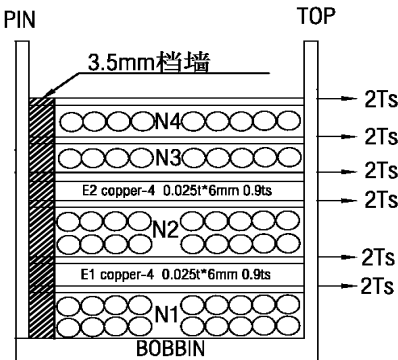
[illegible]

SPECIFICATION

2.SCHEMATIC:



3.WINDING SEQUENCE:



4.WINDING TABLE:

Winding No (组别)	Margin Tape (档墙胶布)	PIN (脚位)	Wire&Wire Copper (线径)	Turns (圈数)	Winding Tape	Tape Layer (胶带层次)	Tube
N1	3.5mm/0	1 - 2	2UEW0.25Ø*1P	50Ts	密绕	2TS	26L*15mm/0
E1	3.5mm/0	Copper-4	0.025t*6mm	0.9TS	背胶	2TS	
N2	3.5mm/0	9,10 - 11,12	0.35Ø*2P 三层绝缘线	13Ts	密绕	2TS	18L*11mm 18L*11mm
E2	3.5mm/0	Copper-4	0.025t*6mm	0.9TS	背胶	2TS	
N3	3.5mm/0	2 - 3	2UEW0.25Ø*1P	16TS	密绕	2TS	
N4	3.5mm/0	5 - 4	2UEW0.25Ø*1P	8TS	居中密绕	2TS	

NOTE:

- 1.PIN朝外制作，首绕组靠PIN端使用3.5mm挡墙。
- 2. N1密绕二层。
- 3.N2密绕二层，使用三层绝缘。
- 4.N3 密绕一层。
- 5. N4密中绕一层。
- 6.E1，E2为内铜箔（背胶一层反折2mm MIN, 铜箔两端用胶带9mm*21mm REF 加工），0.025t*6mm*0.9TS, 接引线Ø0.25*1P于PIN4。

DESCRIPTION	TRANSFORMER	CUSTOMER P/N	XF00957	DATE	2015-11-3
APPROVED	周春壬	CHECKED	罗翠华	REPORTED	周春壬

SPECIFICATION

5.ELECTRCAL CHARACTERISTIC:(Fregneucy 10KHz Voltage 0.25V)

TEST CONDITION : TEMPERATURE AT 25°C

TEST POINT	INDUCTANCE(L)	LK	DCR	TEST INSTRUMENT
(1 - 3)	1.72mH±5%	30uH MAX 短路其它绕组		WK--4235

1)HI-POT TEST:(WK-7620)

PRT TO SEC. AC3.75KV/(50/60Hz)/5mA/2sec

PRT TO CORE. AC1.25KV/(50/60Hz)/5mA/2sec

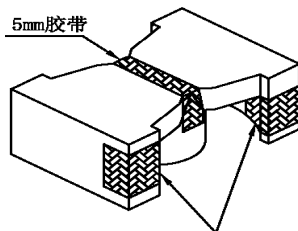
SEC TO CORE. AC1.25KV/(50/60Hz)/5mA/2sec

2)INSULATION TEST:(DC 500V)

BETWEEN PRI. TO SEC.& PRI. TO CORE AND SEC. TO CORE THE RESISTANCE MORE 100M ohm.

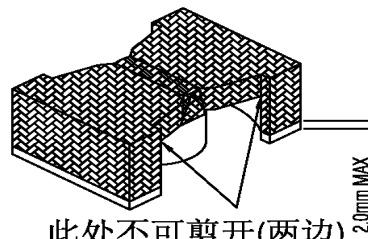
底部研磨CORE用3M1350F-1*2L TAPE加工

图1



5mm胶带磁芯两边反折磁芯内2mm MIN,
装PIN7-14侧

图2



此处不可剪开(两边)

DESCRIPTION	TRANSFORMER	CUSTOMER P/N	XF00957	DATE	2015-11-3
APPROVED	周春壬	CHECKED	罗翠华	REPORTED	周春壬

RDS041. 0307

6 of 8

SPECIFICATION

6.MATERIAL LIST:

ITEM		MATERIAL	SUPPLIER	UL No.	TEMP RATING
1	CORE	PQ2020 TP4 FP2	TDG SHENZHEN SHI LICI ELECTRICAL CO.,LTD		
2	BOBBIN	T375J PQ2020 6-8pin 立式	CHANG CHUN PLASTICS CO.,LTD	E59481	150°C
		PM9820 PQ2020 6-8pin 立式	SUMITOMO BAKELITE	E41429	
3	WIRE	TRW(B)	GREAT LEOFLON INDUSTRIAL CO.,LTD	E211989	130°C
		POLYURETHANE ENAMELDCOPPER EIRE UEW-2	WA TAI ELECTROTEHNICA MATERIALS	E243939	
4	TAPE	1350F-1&3M#44 TAPE	3M COMPANY ELECTRICAL PRODUCTS DIV	E17385	130°C
5	VARNISH	V1630FS	P D GEORGE/VIKING	E73071	130°C
		BC-346A	JOHN C.DOLPH.CO	E51047	
6	TUBE	TEFLON TUBE 150V 200°C	GREAT HOLDING INDUSTRIAL CO.,LTD	E156256	200°C
7	COPPER	0.025*6mm+ TAPE	HONG KONG ZHENGEXIANG INDUSTRIAL DEV.LIMITED		
8	Label	Trnsparent dragon Black 25#	GUANG MING YOU TONG PRINTG FACTORY		

DESCRIPTION	TRANSFORMER	Customer P/N	XF00957	DATE	2015-11-3
APPROVED	周春壬	CHECKED	罗翠华	REPORTED	周春壬

RDS041. 0307

7 of 8

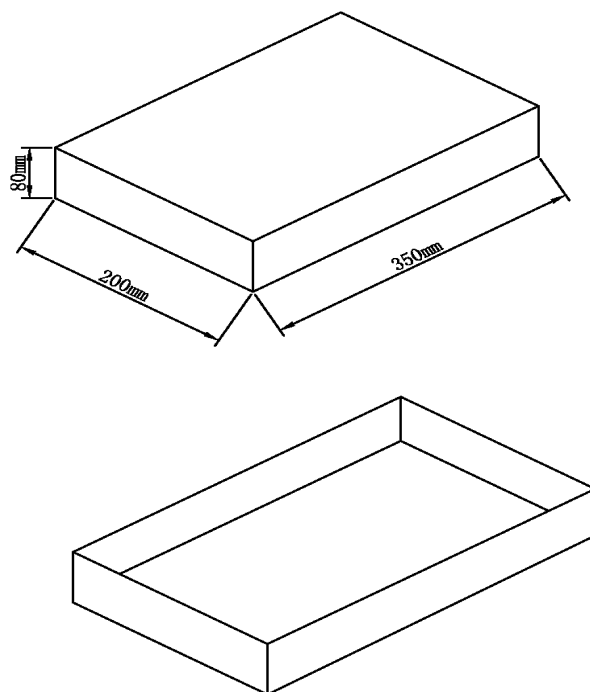
SPECIFICATION

7.PACKING:

1.产品储存条件: AT -20°C to 70°C , 10%RH to 90%RH。

2.产品有效期: 一年。

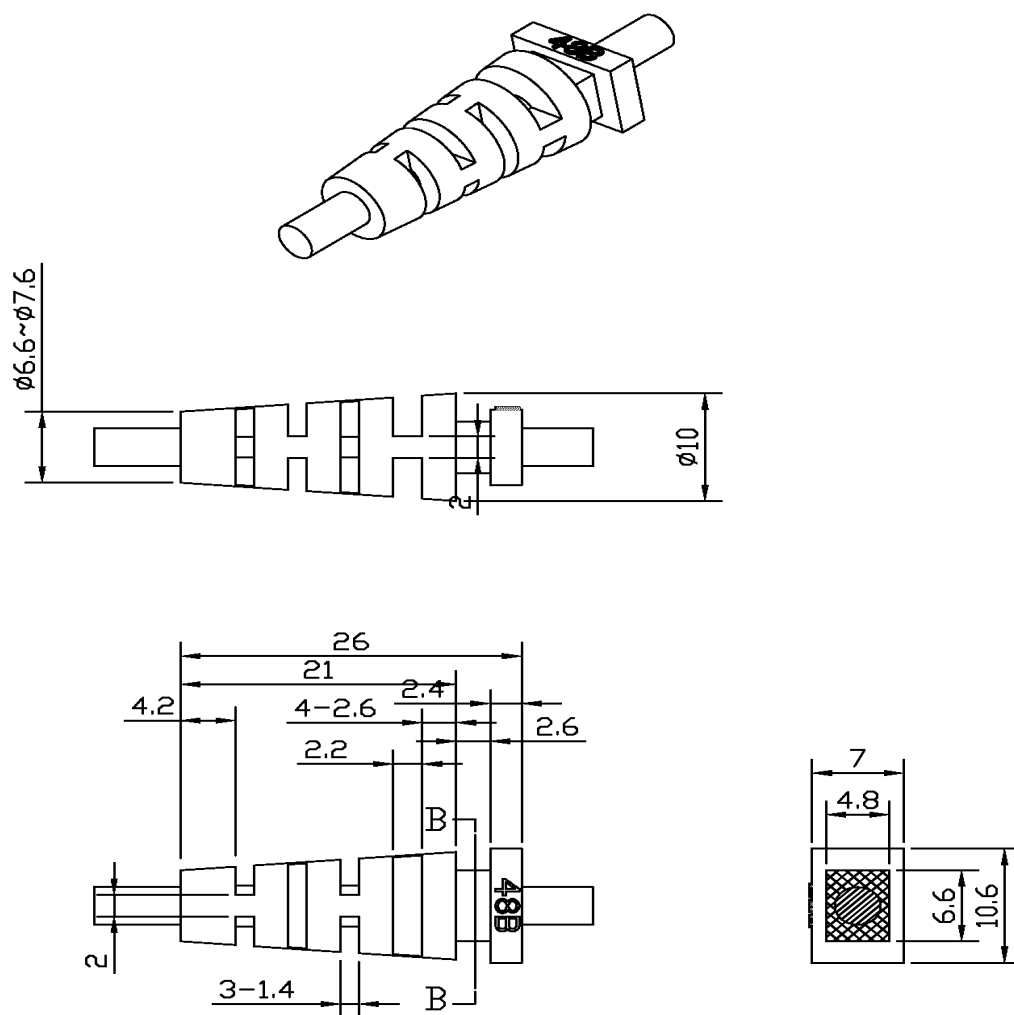
3.包装规格: 每盒排二层。



DESCRIPTION	TRANSFORMER	Customer P/N	XF00957	DATE	2015-11-3
APPROVED	周春壬	CHECKED	罗翠华	REPORTED	周春壬

RDS041. 0307

8 of 8



線材OD: Ø1.5X3.0; Ø1.7X3.4; Ø3.0; Ø3.5

Ø1.8X3.6; Ø1.9X3.8

@3A-261DA12-093增開OD2.2*4.4

09/11/12新增開OD2.6X5.2(16#AWG UL2468)

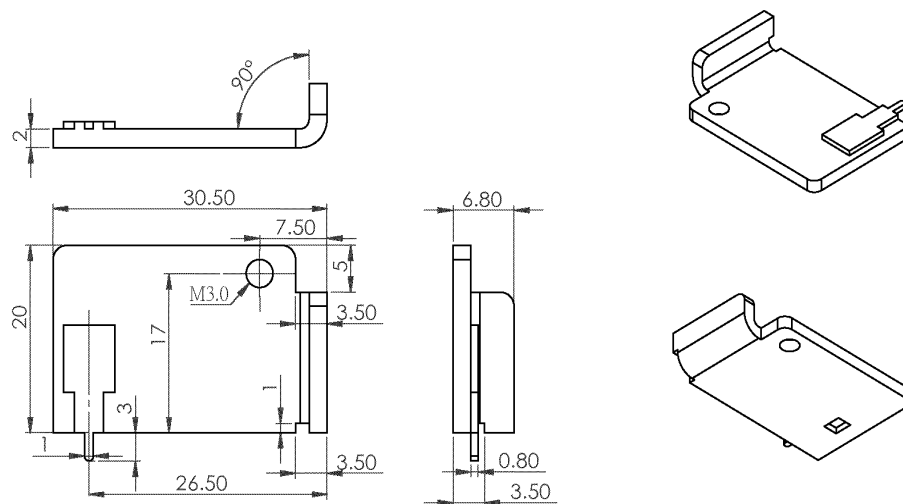
未標示圓角R0.2mm

TOLERANCE

>0.5~<0.3	3.0~<6.0	6.0~<30	30~<120	120~<400
±0.1	±0.15	±0.2	±0.3	±0.4

DESIGNED	CHECKED	APPROVED	UNIT\$	mm	TITLE	SR	DATE
GuanJing	liu min	zhu rg	SCALE		DRAWING No.	R48B	09/02/10
					DRAWING NAME	48B	REVISION
							01

Att.5



材質和顏色以BOM為準，帶*為重點尺寸

TOLERANCE				
>0.5~<3.0	3.0~<6.0	6.0~<30	30~<120	120~<400
±0.05	±0.1	±0.15	±0.2	±0.3

注意事項：

1.材質：鋁

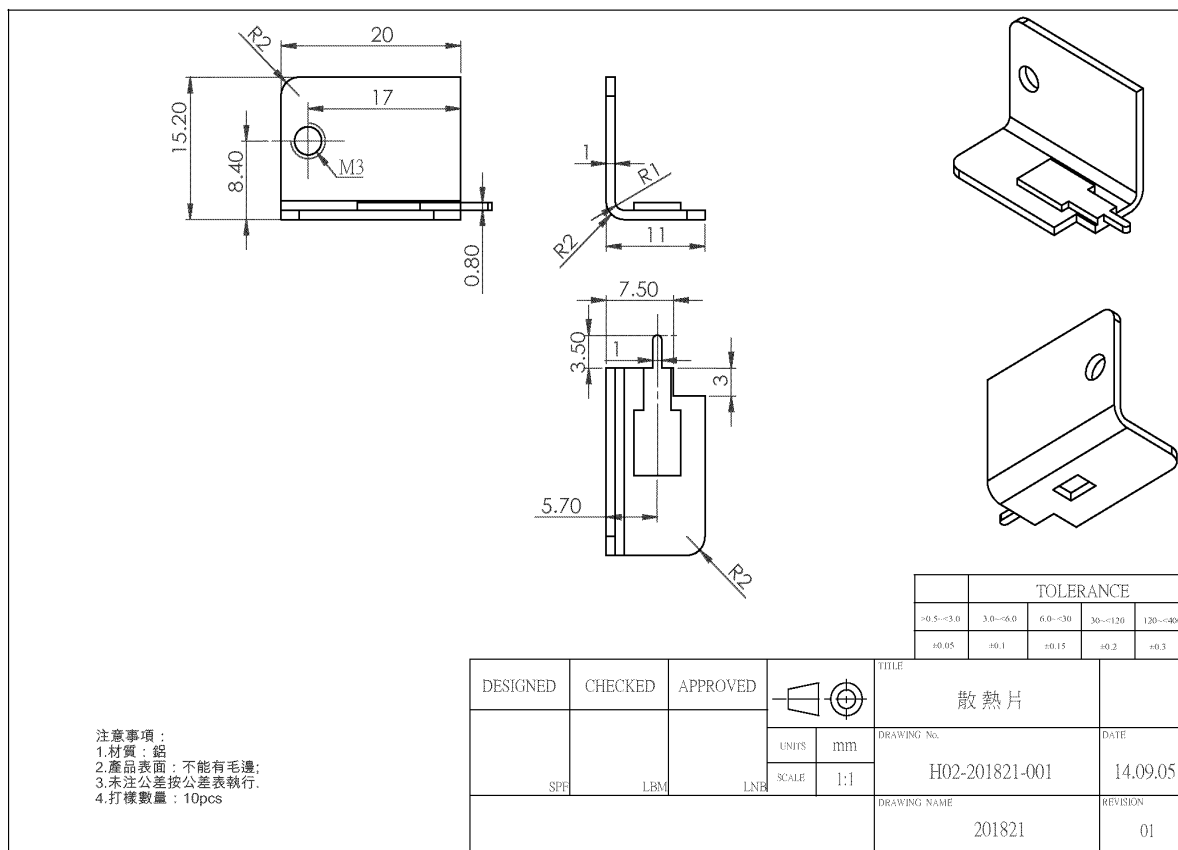
2.產品表面：不能有毛邊；

3.未注公差按公差表執行。

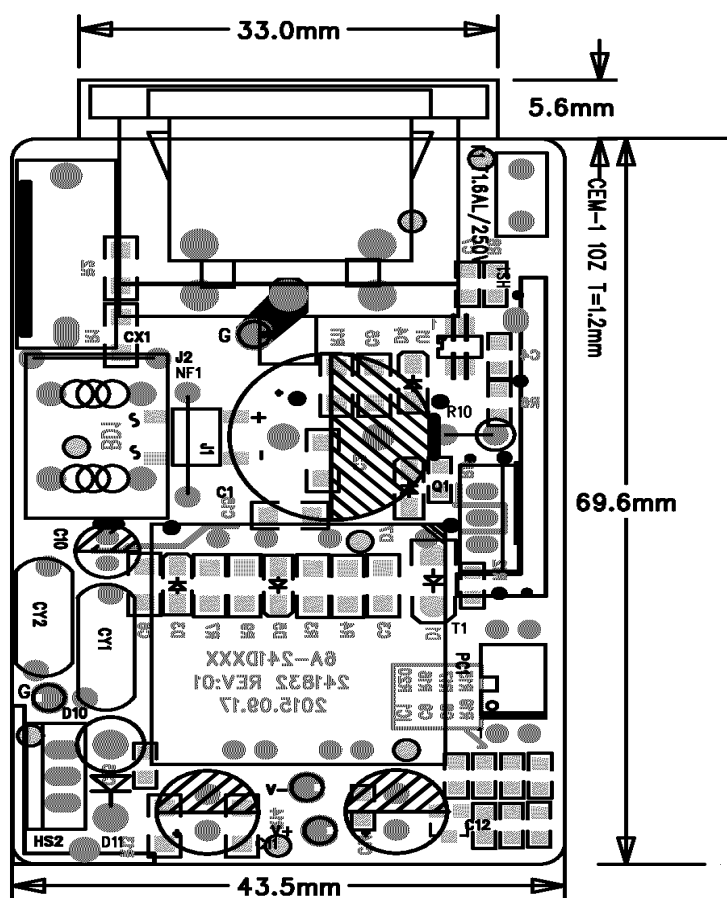
4.打樣數量：20pcs

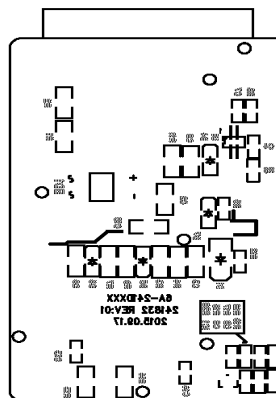
DESIGNED	CHECKED	APPROVED	TITLE	
			散熱片	
			DRAWING No.	DATE
SPF	LBM	LNR	H02-201821-002	14.11.24
			DRAWING NAME	REVISION
			201821	01

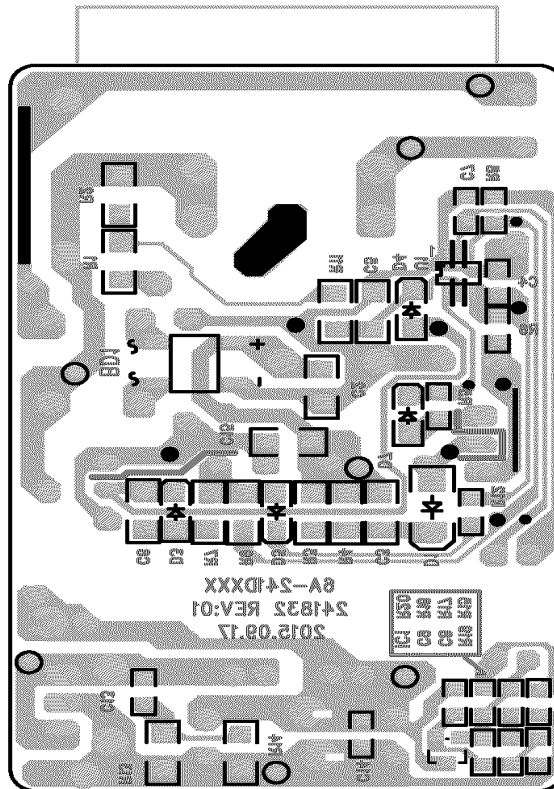
Att.5

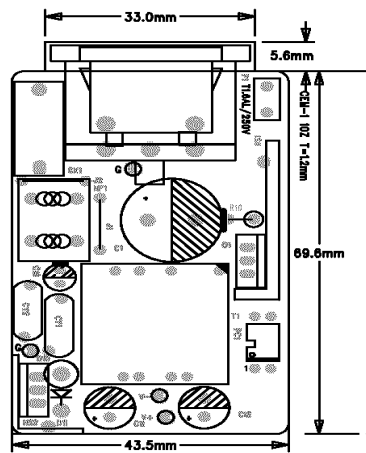


RDS-041 13.12









GT model name	Output voltage	Output current	Max.W	Transformer
GT-46240-2412-TZ	12V	2.0A	24W	XF00956
GT-46240-2415-TZ	15V	1.6A	24W	
GT-46240-2424-TZ	24V	1.0A	24W	XF00957

Issue Date: 2016-04-07

Page 1 of 1

Report Reference #

E341351-A87-UL

Revision Date: 2016-04-13

Test Record

Test Record No. 1

Tests on Model GT-46240-WWVV-X.X-TZ are not required due to copy file