

检测报告

Test Report

样品名称: 可充电锂聚合物电池

Name of Samples: **Rechargeable Li-polymer Battery**

申请商名称: GlobTek,Inc.

Applicant's name: **GlobTek,Inc.**

深圳市北航检测有限公司
Shenzhen Beihang Testing Co., Ltd.

General information(基本资料)			
样品名称 Name of samples	可充电锂聚合物电池 Rechargeable Li-polymer Battery	样品外观颜色 Appearance	黑色 Black
型号/规格 Type/Mode	BL2200F6034501S2PPAL 3.7Vd.c., 2200mAh, 8.14Wh	商标 Trade mark	--
申请商名称 Applicant's name	GlobTek, Inc.		
申请商地址 Applicant's address	186 Veterans Dr. Northvale, NJ 07647 USA		
生产厂 Factory	环球特科(苏州)电源科技有限公司 GlobTek (Suzhou) Co., Ltd.		
生产厂地址 Factory's address	江苏省苏州工业园区金陵东路 76 号 4 幢 Building 4, No. 76, Jinling East Road, Suzhou Industrial Park, Jiangsu 215021, P.R. China		
鉴定依据 Inspection according to	联合国《关于危险货物运输的建议书 规章范本》(18 修订版) 特殊规定 188 条款 UNITED NATIONS "Recommendations on the TRANSPORT OF DANGEROUS GOODS" Model Regulations (18 th Rev. edition) special provisions 188		
测试项目 Test item	1.2m Drop test		
鉴定结论 Certification	包装符合联合国《关于危险货物运输的建议书规章范本》(18 修订版) 特殊规定 188 条款 1,2 米跌落测试要求。 The package was capable of withstanding 1,2m drop test of UNITED NATIONS "Recommendations on the TRANSPORT OF DANGEROUS GOODS" Model Regulations (18th Rev. edition) special provisions 188.		
	Seal/ 印章: Date of issue:/ 日期: Oct.19,2015		



Tested by:

主 检:

吴清施

Reviewed by:

审 核:

商宝莹

Approved by:

批 准:

钟文锋

Package information (包装信息)		
包装件信息 Information for the package	每包装件毛重 Gross weight per package	Approx.0.099 kg
	每包装件电池的净重 Net quantity of batteries per package	Approx.0.088kg
	每包装件含电池个数 Number of batteries per package	2pcs
包装件所含设备信息 Information for equipment in the package	设备名称 Name of equipment	--
	型号 Type/Mode	--
	商标 Trade mark	--
备注 / Remarks: 防短路及意外启用的内部包装方式是：独立小包装 The manner of inner packaging that can prevent short circuits and accidental operation: Independent packaging.		

Photos of packages (包装照片)

Outer package / 外包装

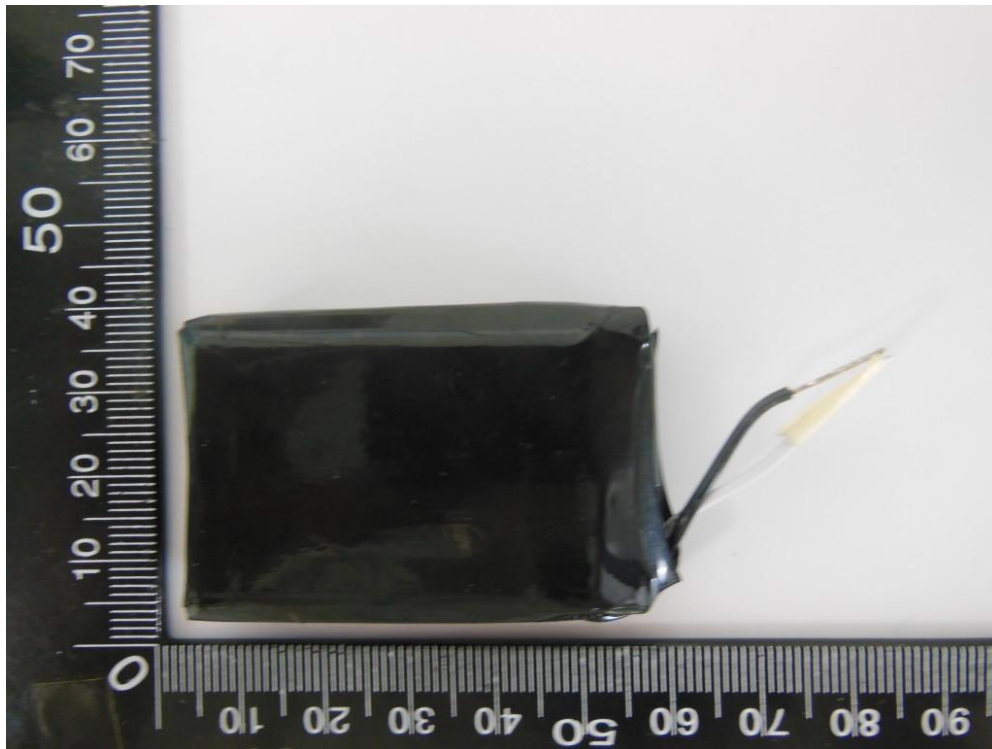


Inner package / 内包装



Photos of Samples (样品照片)

Rechargeable Li-polymer Battery /可充电锂聚合物电池 (3.7Vd.c., 2200mAh, 8.14Wh)



1.2m Drop test(1.2 米跌落测试)			
Test Items 测试项目	Drop test 跌落测试		
1.1	Test procedure 测试步骤		
	The package of batteries is dropped from 1,2m in any orientation. The test floor is concrete floor. 电池的包装件以任意方向从 1,2 米跌落至水泥地面。		
	Each package is capable of withstanding a 1,2m drop test in any orientation without damage to cells or batteries contained therein, without shifting of the contents so as to allow battery to battery(or cell to cell) contact and without release of contents. 每个电池的包装件以任意方向从 1,2 米跌落，而没有造成包装件内的电池或电芯的损坏，也没有移动包装件内的电池或电芯使其相互接触以及包装件内的电池或电芯漏出。		
1.2	Result 测试结果		
	No batteries or cells is damaged or connected by neighbor, the batteries or cells should not be released from package. 包装件内的电池或电芯无损坏，无相互接触。包装件内的电池或电芯不能从包装件漏出。	Surface 面跌落	The package is not cracked, the contents are not damaged and not shifted. 包装未破裂，内装物完好。
		Arris 棱跌落	The package is not cracked, the contents are not damaged and not shifted. 包装未破裂，内装物完好。
		Angle 角跌落	The package is not cracked, the contents are not damaged and not shifted. 包装未破裂，内装物完好。

--End of Test Report--