


1.0 Reference and Address					
Report Number	200300447SHA-001	Original Issued:	13-Jan-2021	Revised:	None
Standard(s)	Audio/Video, Information And Communication Technology Equipment - Part 1: Safety Requirements [UL 62368-1:2014 Ed.2]				
	Audio/Video, Information and Communication Technology Equipment - Part 1: Safety Requirements (R2019) [CSA C22.2#62368-1:2014 Ed.2]				
Applicant	GlobTek, Inc.		Manufacturer	GlobTek (Suzhou) Co., Ltd.	
Address	186 Veterans Dr. Northvale, NJ 07647		Address	Building 4. No 76 JinLing East Road, Suzhou Industrial Park, Suzhou, JiangSu, 215021	
Country	USA		Country	China	
Contact	Mike Krakovyak		Contact	Demon Zhou	
Phone	(201)784-1000 Ext.106		Phone	86 512 6279 0301 Ext.189	
FAX	(201)784-0111		FAX	86 512 6279 0355	
Email	Krakovyakm@globtek.us		Email	demon.zhou@globtek.cn	

2.0 Product Description	
Product	ITE/ICT Power Supply
Brand name	 (image only)
Description	Product covered by this report is power supply module. One is direct plug-in power adapter with interchangeable plug portion, which is Class II apparatus. The power supplies are all rated for Limited Power Source (LPS) application. Two pieces of outer enclosure are enclosed with ultrasonic welding without screw. The product is not intended to use in the environment which altitude exceed 5000m.
Models	GT-41134-0606-W2-TAB.  GT followed by -, M or H; followed by 41134 or 96060; followed by - or CC; followed by 01 to 07; followed by 03, 04, 06, 12, 15, 18, 24, 36 or 48; may be followed by -0.1 to -11.9; may be followed by any six character.
Model Similarity	<p>GT*41134***** and GT*96060*****</p> <p>The 1st “*” part can be ‘M’ or ‘-’ or ‘H’ for market identification and not related to safety.</p> <p>The 2nd “*” part can be “-” or “CC”, “-” means Constant Voltage Model, CC means Constant Current Model.</p> <p>The 3rd “*” denotes the rated output wattage designation, which can be “01” to “07”, with interval of 1.</p> <p>The 4th “*” denotes the standard rated output voltage designation, which can be “03”, “04”, “06”, “12”, “15”, “18”, “24”, “36” or “48”. These standard rated output voltage designations correspond to eleven isolated transformer models. Each transformer model is identical in insulation construction including clearance and creepage except number of turns per coil.</p> <p>The 5th “*” is optional deviation, subtracted from standard output voltage, which can be “-0.1” to “-11.9” with interval of 0.1, or blank to indicate no voltage different.</p> <p>The 4th “*” and 5th “*” together denote the output voltage, with a range of 3.3 - 48 volts.</p> <p>The last “*” denote any six character which can be “0” to “9”, “A” to “Z”, “-”, “()” or “[]” or blank for marketing purposes and have no bearing on safety or compliance.</p> <p>Model GT-41134-0606-W2-TAB is special direct plug-in type for North America market, with particular housing, varistor and fixed NEMA 1-15P plug.</p> <p>Transformers used in models of GT*41134***** and GT*96060***** are with similar construction. The turns of secondary winding may be added or reduced according different output voltage. The whole coil of transformer for GT-41134-0606-W2-TAB is wrapped by copper film.</p> <p>One structure type only use F1 fuse in primary circuit and a LED indicator (optional) used in secondary circuit.</p> <p>GT*96060***** is identify with GT*41134***** except for model name. Some non-critical components may be adjusted according different output voltage. The parameters of these components depend on output voltage.</p>
Ratings	Input: 100-240V ~ , 50-60Hz, 0.3A or 0.6A for GT*41134***** and GT*96060*****; 120V~, 60Hz, 0.3A for GT-41134-0606-W2-TAB Output: See section 7.0, Illustration 1 for details
Other Ratings	N/A

**3.0 Product Photographs**

**Photo 1 - External view for GT\*41134\*\*\*\*\* and GT\*96060\*\*\*\*\***



**Photo 2 - External view for GT\*41134\*\*\*\*\* and GT\*96060\*\*\*\*\***



**3.0 Product Photographs**

**Photo 3 - External view for GT\*41134\*\*\*\*\* and GT\*96060\*\*\*\*\***



**Photo 4 - Internal view for GT\*41134\*\*\*\*\* and GT\*96060\*\*\*\*\***



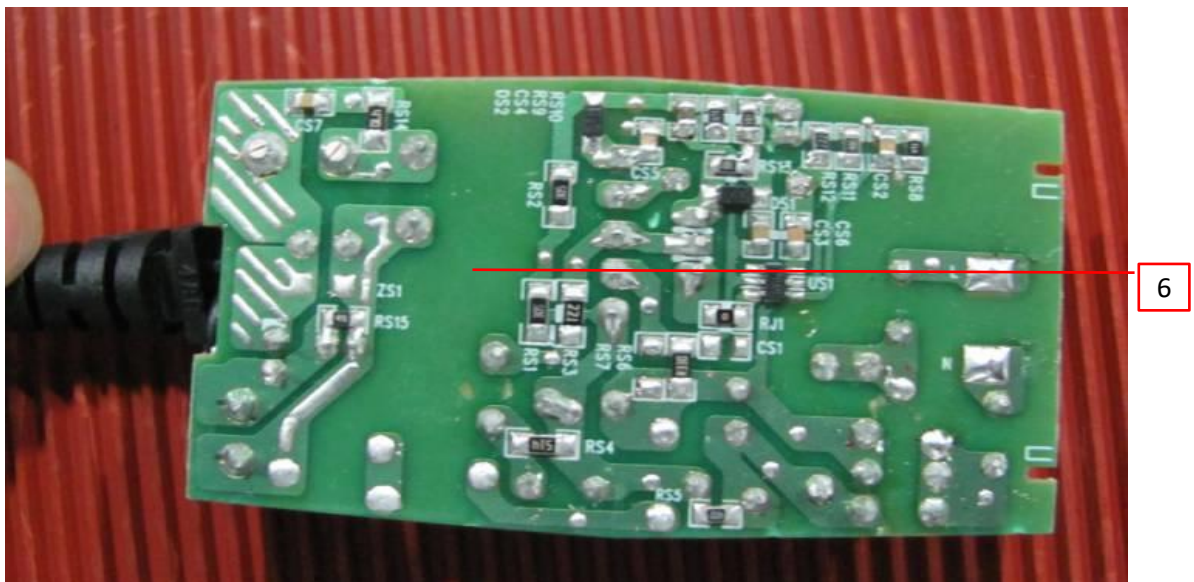


**3.0 Product Photographs**

Photo 5 - PCB view



Photo 6 - PCB view

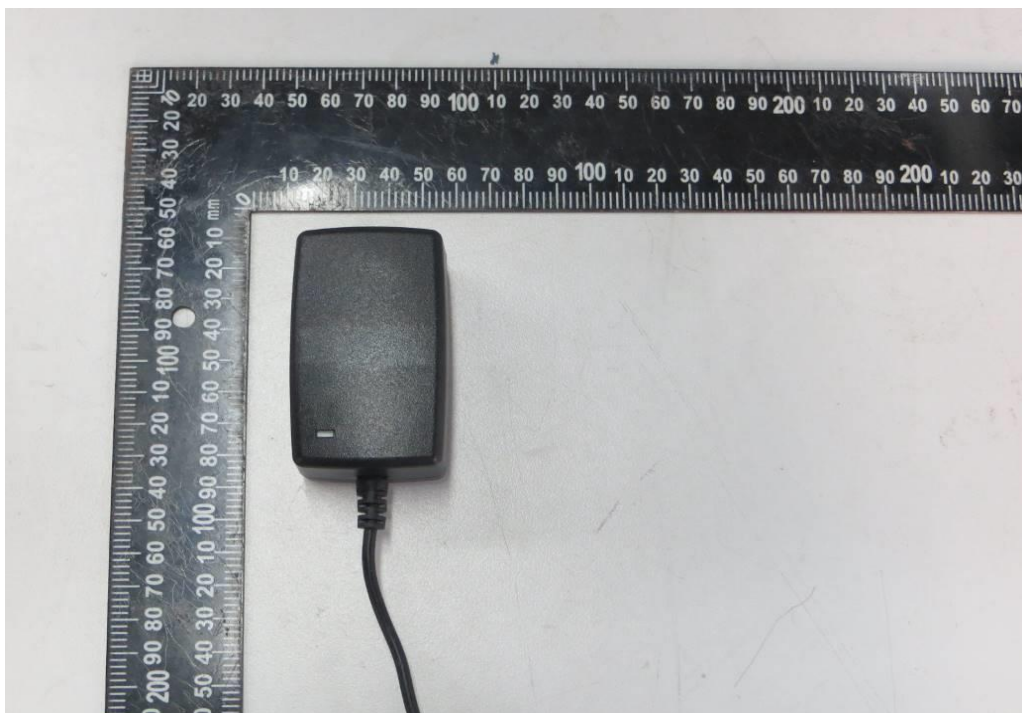


**3.0 Product Photographs**

**Photo 7 - External view for the structure type only use F1 and a LED indicator (optional)**



**Photo 8 - External view for the structure type only use F1 and a LED indicator (optional)**

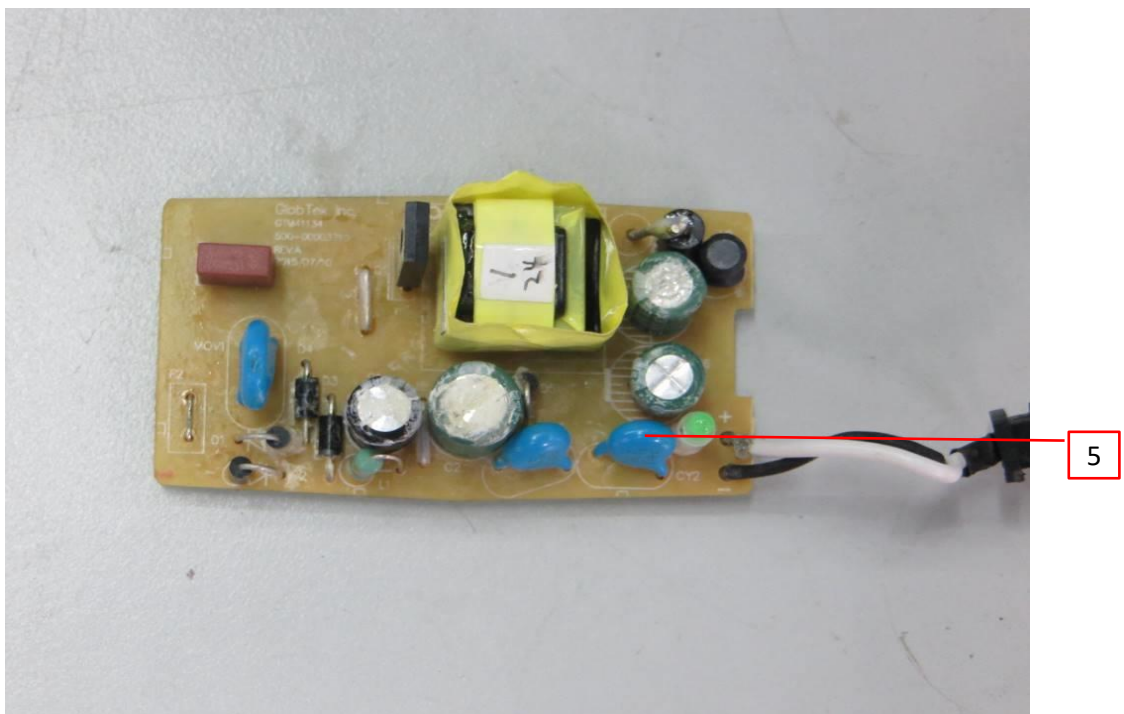


**3.0 Product Photographs**

**Photo 9 - Internal view for the structure type only use F1 and a LED indicator (optional)**



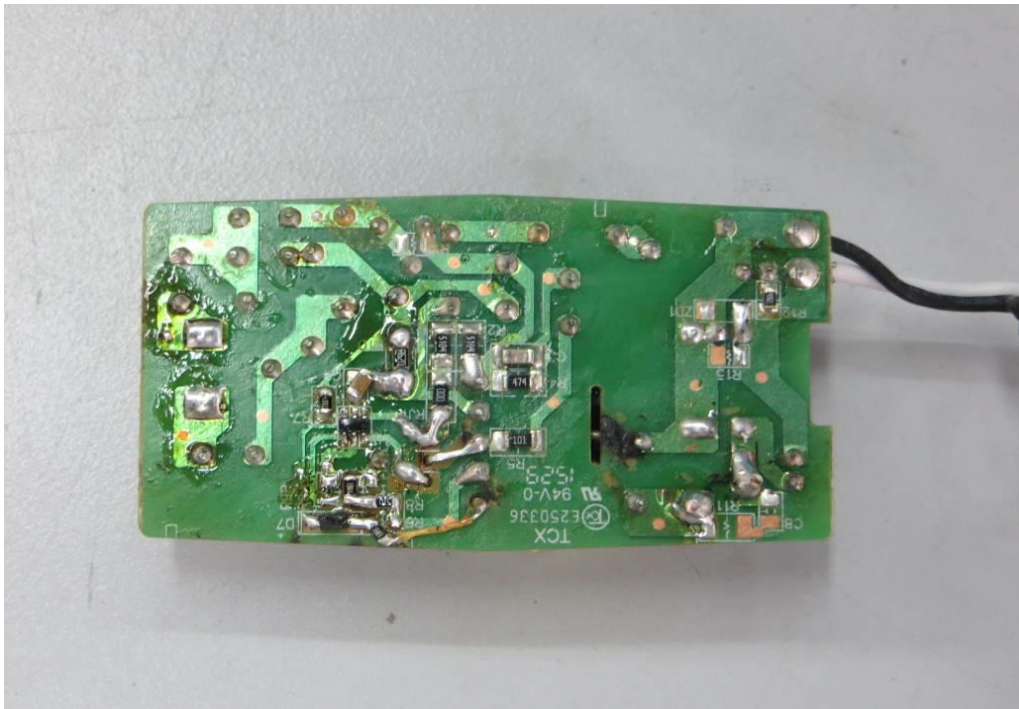
**Photo 10 - PCB view**





**3.0 Product Photographs**

**Photo 11 - PCB view**



**Photo 12 - External View for model GTM96060-0706-1.0**





**3.0 Product Photographs**

**Photo 13 - External View for model GTM96060-0706-1.0**



**Photo 14 - Internal View for model GTM96060-0706-1.0**



**3.0 Product Photographs**

**Photo 15 - Internal View for model GTM96060-0706-1.0**



**Photo 16 - External View for model GT-41134-0606-W2-TAB**

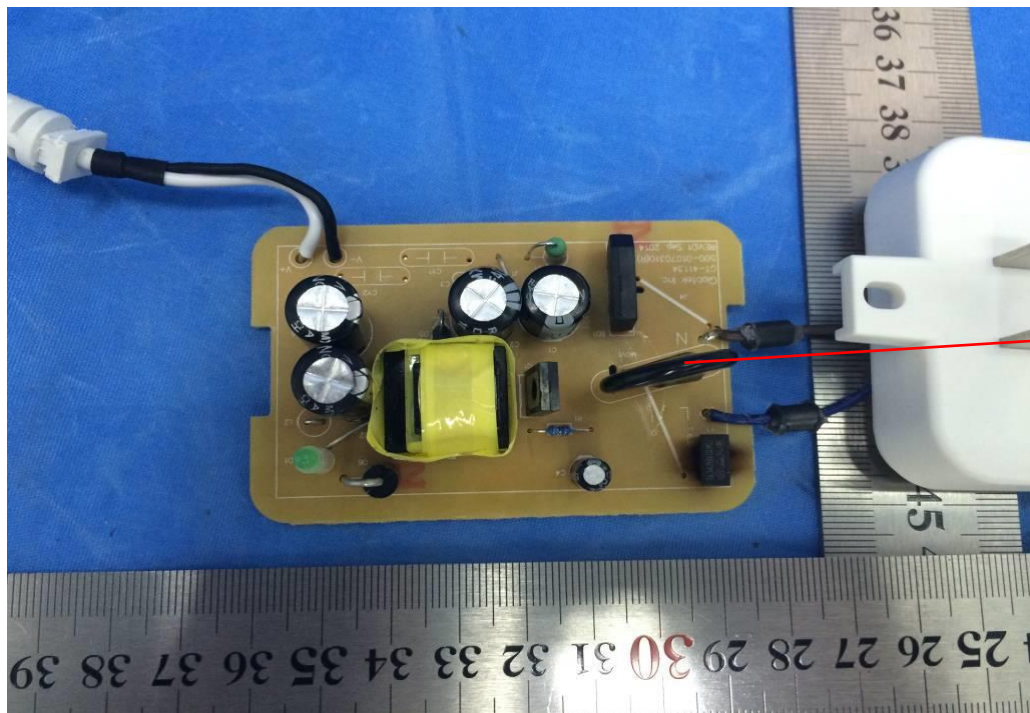


**3.0 Product Photographs**

**Photo 17 - External View for model GT-41134-0606-W2-TAB**



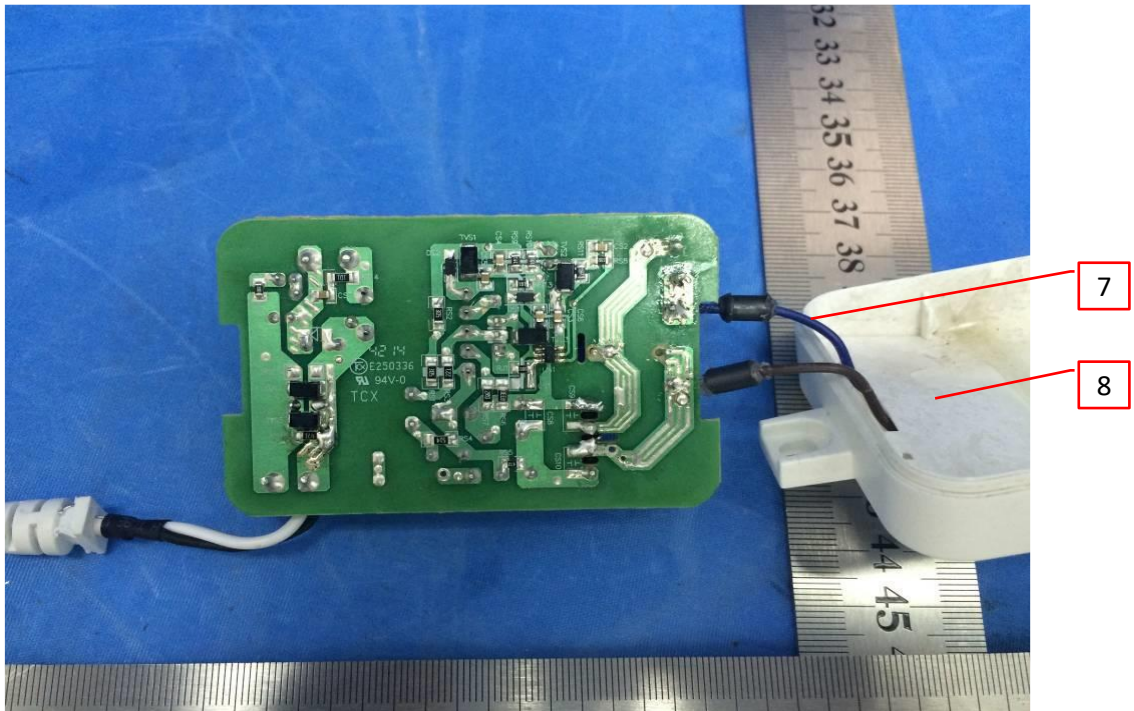
**Photo 18 - Component side view of PCB of model GT-41134-0606-W2-TAB**



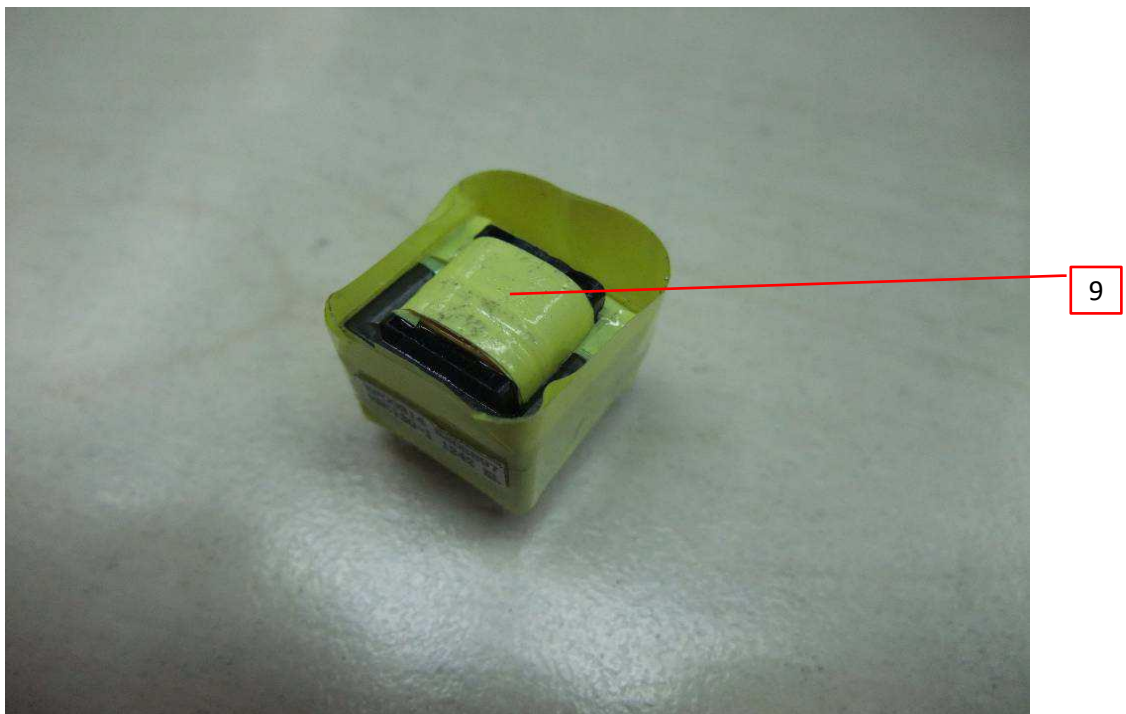


**3.0 Product Photographs**

**Photo 19 - Soldering side view of PCB of model GT-41134-0606-W2-TAB**



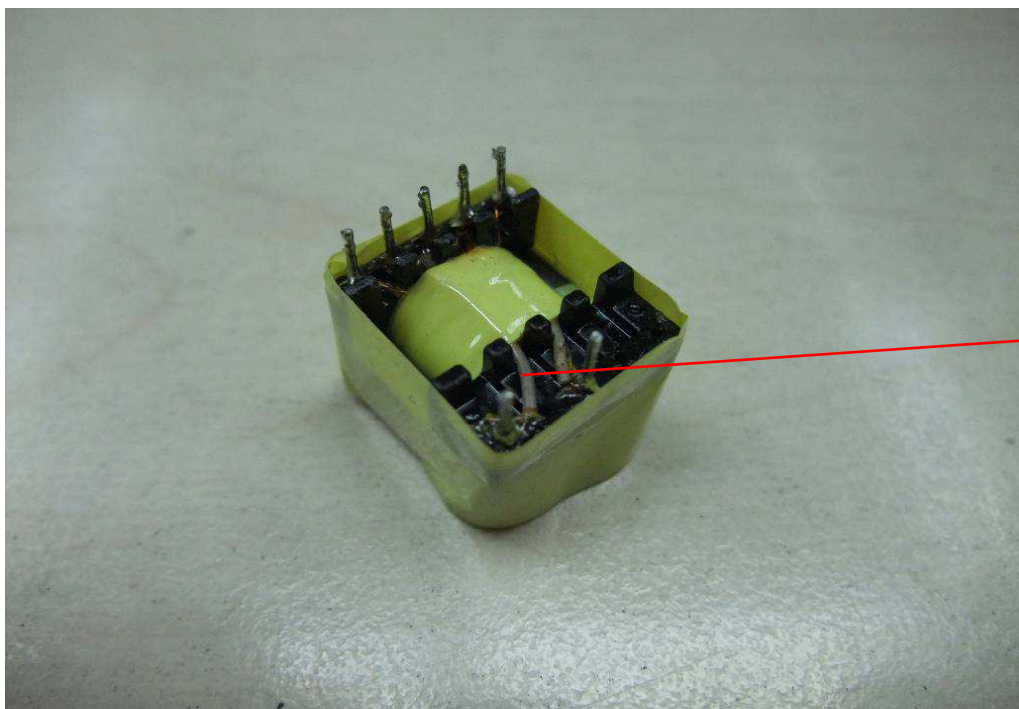
**Photo 20 - Transformer**





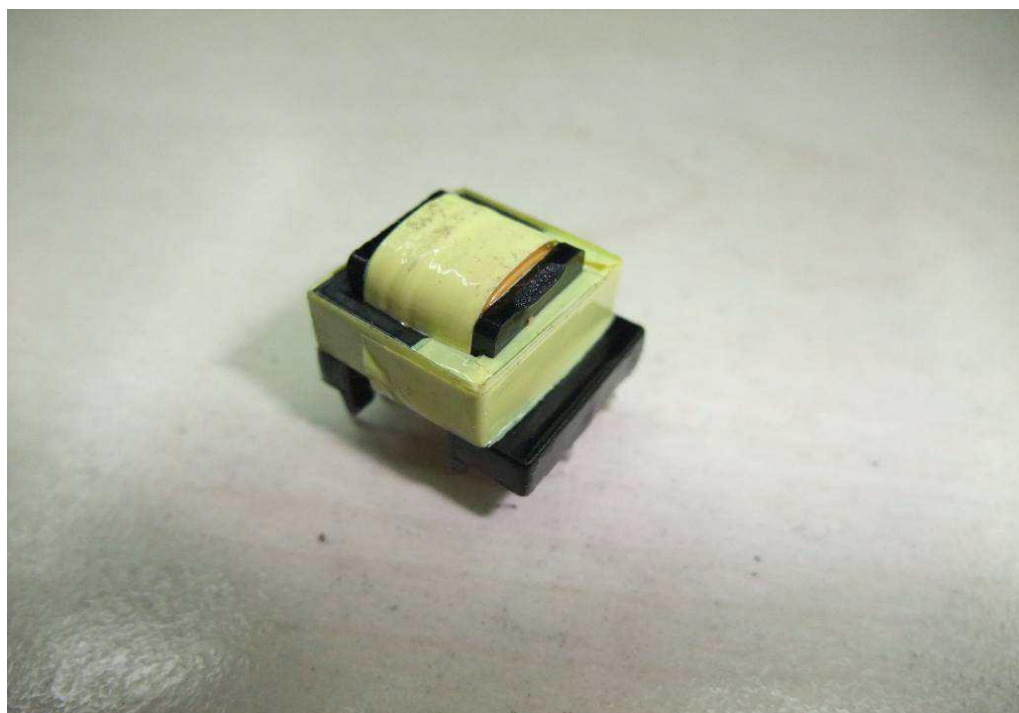
**3.0 Product Photographs**

**Photo 21 - Transformer**



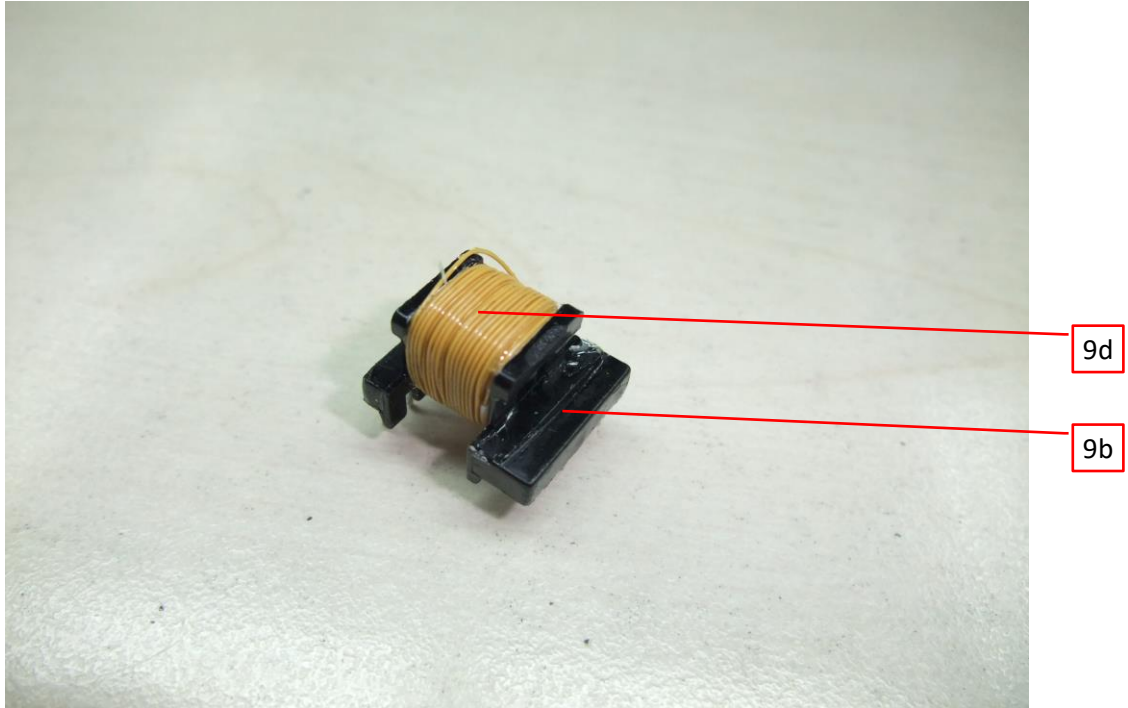
9f

**Photo 22 - Transformer**

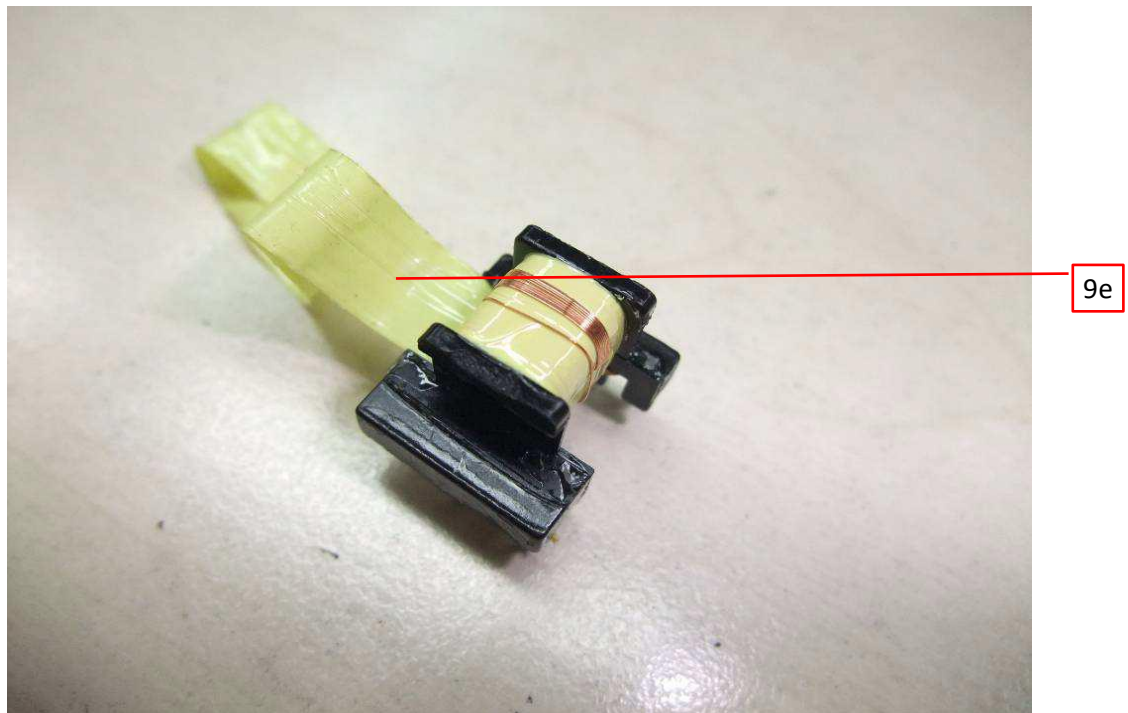


**3.0 Product Photographs**

**Photo 23 - Transformer**

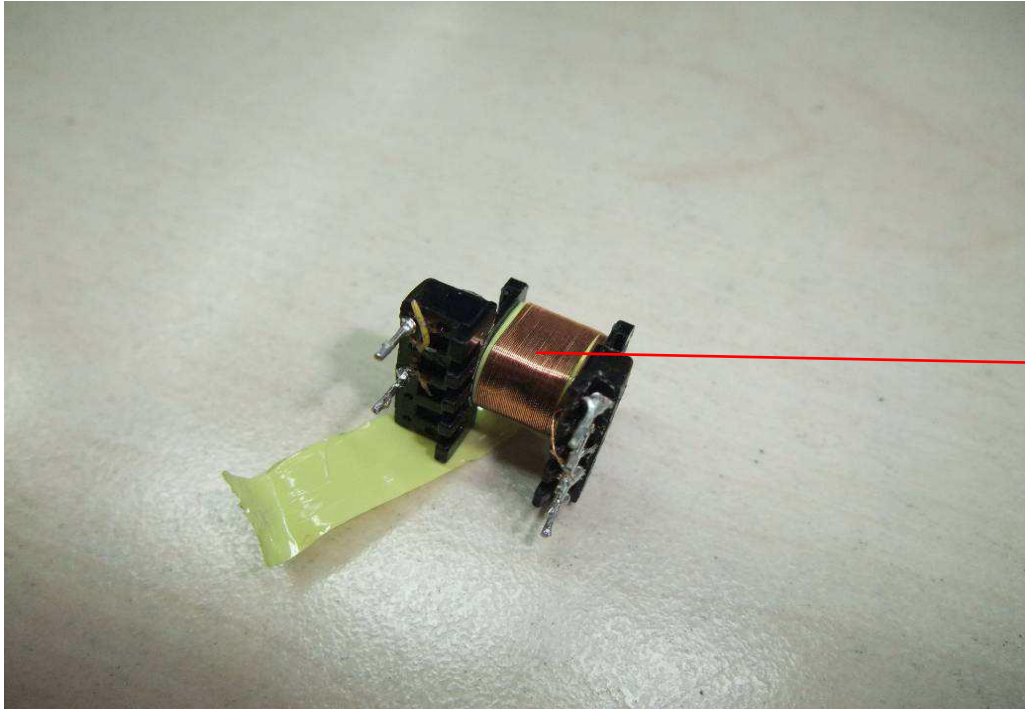


**Photo 24 - Transformer**



**3.0 Product Photographs**

**Photo 25 - Transformer**

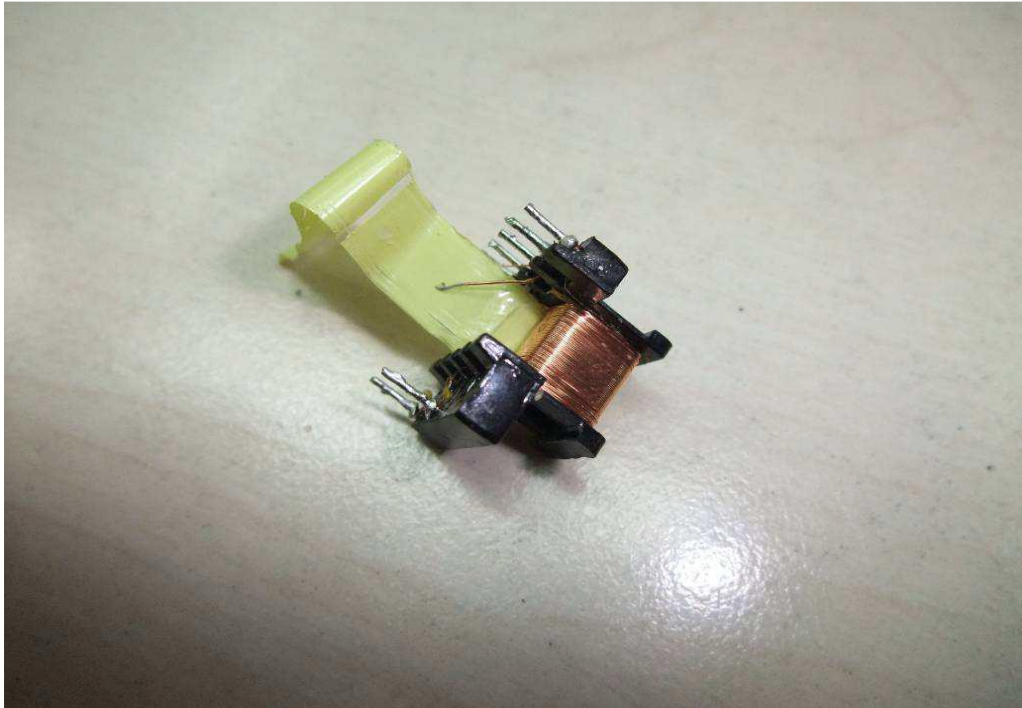


**Photo 26 - Transformer**



**3.0 Product Photographs**

**Photo 27 - Transformer**





4.0 Critical Components						
Photo #	Item no. <sup>1</sup>	Name	Manufacturer/ trademark <sup>2</sup>	Type / model <sup>2</sup>	Technical data and securement means	Mark(s) of conformity <sup>3</sup>
3, 16	1	Enclosure and Blade holder	SABIC INNOVATIVE PLASTICS B V	SE1	PPE+PS, V-1, HWI 1, HAI 2, 105°C , min thickness: 2.0mm; Fixed by ultrasonic welding and without opening;	cURus
			SABIC INNOVATIVE PLASTICS B V	SE1X	PPE+PS, V-1, HWI 0, HAI 0, 105°C , min thickness: 2.0mm; Fixed by ultrasonic welding and without opening;	cURus
			SABIC INNOVATIVE PLASTICS B V	SE100	PPE+PS, V-1, HWI 2, HAI 0, 95°C , min thickness: 2.0mm; Fixed by ultrasonic welding and without opening;	cURus
			SABIC INNOVATIVE PLASTICS B V	C2950	PC/ABS, V-0, HWI 3, HAI 0, 85°C , min thickness: 2.0mm; Fixed by ultrasonic welding and without opening;	cURus
			SABIC INNOVATIVE PLASTICS B V	CX721	PC/ABS, V-0, 5VB, HWI 2, HAI 0, 90°C , min thickness: 2.0mm; Fixed by ultrasonic welding and without opening;	cURus
			SABIC INNOVATIVE PLASTICS B V	EXCY0098	PC/ABS, V-0, 5VB, HWI 2, HAI 0, 90°C , min thickness: 2.0mm; Fixed by ultrasonic welding and without opening;	cURus
			SABIC INNOVATIVE PLASTICS B V	945	PC, V-0, HWI 3, HAI 3, 120°C, min thickness: 2.0mm; Fixed by ultrasonic welding and without opening;	cURus
			SABIC INNOVATIVE PLASTICS B V	940	PC, V-0, HWI 3, HAI 3, 120°C, min thickness: 2.0mm; Fixed by ultrasonic welding and without opening;	cURus
			SABIC JAPAN L L C	SE1	PPE+PS, V-1, HWI 1, HAI 2, 105°C , min thickness: 2.0mm; Fixed by ultrasonic welding and without opening;	cURus
			SABIC JAPAN L L C	SE1X	PPE+PS, V-1, HWI 0, HAI 0, 105°C , min thickness: 2.0mm; Fixed by ultrasonic welding and without opening;	cURus
			SABIC JAPAN L L C	SE100	PPE+PS, V-1, HWI 2, HAI 0, 95°C , min thickness: 2.0mm; Fixed by ultrasonic welding and without opening;	cURus
			SABIC JAPAN L L C	C2950	PC/ABS, V-0, HWI 3, HAI 0, 85°C , min thickness: 2.0mm; Fixed by ultrasonic welding and without opening;	cURus
			SABIC JAPAN L L C	CX721	PC/ABS, V-0, 5VB, HWI 2, HAI 0, 90°C , min thickness: 2.0mm; Fixed by ultrasonic welding and without opening;	cURus
			SABIC JAPAN L L C	EXCY0098	PC/ABS, V-0, 5VB, HWI 2, HAI 0, 90°C , min thickness: 2.0mm; Fixed by ultrasonic welding and without opening;	cURus

4.0 Critical Components						
Photo #	Item no. <sup>1</sup>	Name	Manufacturer/ trademark <sup>2</sup>	Type / model <sup>2</sup>	Technical data and securement means	Mark(s) of conformity <sup>3</sup>
			SABIC JAPAN L L C	945	PC, V-0, HWI 3, HAI 3, 120°C, min thickness: 2.0mm; Fixed by ultrasonic welding and without opening;	cURus
			SABIC JAPAN L L C	940	PC, V-0, HWI 3, HAI 3, 120°C, min thickness: 2.0mm; Fixed by ultrasonic welding and without opening;	cURus
			TEIJIN CHEMICALS LTD	LN-1250P	PC, V-0, HWI 3, HAI 0, 115°C, min thickness: 2.0mm; Fixed by ultrasonic welding and without opening;	cURus
			TEIJIN CHEMICALS LTD	LN-1250G	PC, V-0, HWI 3, HAI 0, 115°C, min thickness: 2.0mm; Fixed by ultrasonic welding and without opening;	cURus
			SABIC INNOVATIVE PLASTICS B V	HF500R	PC, V-0, HWI 1, HAI 3, 115°C, min thickness: 2.0mm; Fixed by ultrasonic welding and without opening;	cURus
			CHI MEI CORPORATION	PA-765A	ABS, V-0, 5VB, HWI 3, HAI 0, 80°C, min thickness: 2.0mm; Fixed by ultrasonic welding and without opening;	cURus
			CHI MEI CORPORATION	PC-540	PC/ABS, V-0, HWI 3, HAI 3, 70°C, min thickness: 2.0mm; Fixed by ultrasonic welding and without opening;	cURus
1, 12, 16	2	Output cord	Various	1185	Min. 24AWG, min. 300Vac, min. 80°C	cURus
			Various	2464	Min. 24AWG, min. 300Vac, min. 80°C	cURus
			Various	2468	Min. 24AWG, min. 300Vac, min. 80°C	cURus
			Various	SPT-1	Min. 24AWG, min. 300Vac, min. 80°C	cURus
			Various	SVJ	Min. 24AWG, min. 300Vac, min. 80°C	cURus
			Various	Various	Min. 24AWG, min. 300Vac, min. 80°C, performance parameter shall be equal to 1185, 2464 or 2468.	cURus

4.0 Critical Components						
Photo #	Item no. <sup>1</sup>	Name	Manufacturer/ trademark <sup>2</sup>	Type / model <sup>2</sup>	Technical data and securement means	Mark(s) of conformity <sup>3</sup>
5	3	Fuse	CONQUER ELECTRONICS CO LTD	MST series	For F1 and F2, F2 is optional; T1A or T6.3A, 250V; T6.3A for model GT-41134-0606-W2-TAB used.	cURus
			EVER ISLAND ELECTRIC CO LTD & WALTER ELECTRIC	2010	For F1 and F2, F2 is optional; T1A or T6.3A, 250V; T6.3A for model GT-41134-0606-W2-TAB used.	cURus
			EVER ISLAND ELECTRIC CO LTD & WALTER ELECTRIC	ICP	For F1 and F2, F2 is optional; T1A or T6.3A, 250V; T6.3A for model GT-41134-0606-W2-TAB used.	cURus
			BEL FUSE INC	RST series	For F1 and F2, F2 is optional; T1A or T6.3A, 250V; T6.3A for model GT-41134-0606-W2-TAB used.	cURus
			COOPER BUSSMANN LLC	SS-5	For F1 and F2, F2 is optional; T1A or T6.3A, 250V; T6.3A for model GT-41134-0606-W2-TAB used.	cURus
			SHENZHEN LANSON ELECTRONICS CO LTD	SMT	For F1 and F2, F2 is optional; T1A or T6.3A, 250V; T6.3A for model GT-41134-0606-W2-TAB used.	cURus
			DAS & SONS INTERNATIONAL LTD	385T series	For F1 and F2, F2 is optional; T1A or T6.3A, 250V; T6.3A for model GT-41134-0606-W2-TAB used.	cURus
			DONGGUAN BETTER ELECTRONICS TECHNOLOGY CO LTD	932	For F1 and F2, F2 is optional; T1A or T6.3A, 250V; T6.3A for model GT-41134-0606-W2-TAB used.	cURus
			HOLLYLAND CO LTD	5ET	For F1 and F2, F2 is optional; T1A or T6.3A, 250V; T6.3A for model GT-41134-0606-W2-TAB used.	cURus
			SUNNY EAST ENTERPRISE CO LTD	CFD series	For F1 and F2, F2 is optional; T1A or T6.3A, 250V; T6.3A for model GT-41134-0606-W2-TAB used.	cURus
			CONQUER ELECTRONICS CO LTD	MET series	For F1 and F2, F2 is optional; T1A or T6.3A, 250V; T6.3A for model GT-41134-0606-W2-TAB used.	cURus
			ZHONG SHAN LANBAO ELECTRICAL APPLIANCES CO LTD	RTI-10 series	For F1 and F2, F2 is optional; T1A or T6.3A, 250V; T6.3A for model GT-41134-0606-W2-TAB used.	cURus

4.0 Critical Components						
Photo #	Item no. <sup>1</sup>	Name	Manufacturer/ trademark <sup>2</sup>	Type / model <sup>2</sup>	Technical data and securement means	Mark(s) of conformity <sup>3</sup>
9, 18	4	Varistor (Optional)	THINKING ELECTRONIC INDUSTRIAL CO LTD	TVR10471K	For MOV1; Max. Continuous voltage: min 300Vac(rms), 85°C	cURus
			THINKING ELECTRONIC INDUSTRIAL CO LTD	TVR14471K	For MOV1; Max. Continuous voltage: min 300Vac(rms), 85°C	cURus
			CENTRA SCIENCE CORP	CNR-10D471K	For MOV1; Max. Continuous voltage: min 300Vac(rms), 105°C	cURus
			CENTRA SCIENCE CORP	CNR-14D471K	For MOV1; Max. Continuous voltage: min 300Vac(rms), 105°C	cURus
			SUCCESS ELECTRONICS CO LTD	SVR10D471K	For MOV1; Max. Continuous voltage: min 300Vac(rms), 105°C	cURus
			SUCCESS ELECTRONICS CO LTD	SVR14D471K	For MOV1; Max. Continuous voltage: min 300Vac(rms), 105°C	cURus
			WALSIN TECHNOLOGY CORP	VZ14D471K	For MOV1; Max. Continuous voltage: min 300Vac(rms), 85°C	cURus
			LIEN SHUN ELECTRONICS CO LTD	14D471K	For MOV1; Max. Continuous voltage: min 300Vac(rms), 105°C	cURus
			CERAMATE TECHNICAL CO LTD	10D471K	For MOV1; Max. Continuous voltage: min 300Vac(rms), 105°C	cURus
			CERAMATE TECHNICAL CO LTD	14D471K	For MOV1; Max. Continuous voltage: min 300Vac(rms), 105°C	cURus
			BRIGHTKING (SHENZHEN) CO LTD	14D471K	For MOV1; Max. Continuous voltage: min 300Vac(rms), 105°C	cURus
			BRIGHTKING (SHENZHEN) CO LTD	10D471K	For MOV1; Max. Continuous voltage: min 300Vac(rms), 105°C	cURus
			JOYIN CO LTD	10N471K	For MOV1; Max. Continuous voltage: min 300Vac(rms), 85°C	cURus
			JOYIN CO LTD	14N471K	For MOV1; Max. Continuous voltage: min 300Vac(rms), 85°C	cURus
			Panasonic Corporation	ERZV20D241 (V20241U)	For MOV1; Max. Continuous voltage: 150Vac(rms), 85°C; only for GT-41134-0606-W2-TAB used	cURus
Brightking (Shenzhen) Co., Ltd.	241KD20J	For MOV1; Max. Continuous voltage: 150Vac(rms), 85°C; only for GT-41134-0606-W2-TAB used	cURus			
EPCOS	S20K150	For MOV1; Max. Continuous voltage: 150Vac(rms), 85°C; only for GT-41134-0606-W2-TAB used	cURus			



4.0 Critical Components						
Photo #	Item no. <sup>1</sup>	Name	Manufacturer/ trademark <sup>2</sup>	Type / model <sup>2</sup>	Technical data and securement means	Mark(s) of conformity <sup>3</sup>
			Thinking Electronic Industrial Co., Ltd.	TVR20241K	For MOV1; Max. Continuous voltage: 150Vac(rms), 85°C; only for GT-41134-0606-W2-TAB used	cURus
			Success Electronics Co., Ltd.	SVR20D241K	For MOV1; Max. Continuous voltage: 150Vac(rms), 85°C; only for GT-41134-0606-W2-TAB used	cURus
10	5	Y capacitor (Optional)	TDK CORPORATION	CD	Y1, AC250V, max 4700pF, -25~+85°C; For CY1 and CY2	cURus
			SUCCESS ELECTRONICS CO LTD	SE	Y1, AC250V, max 4700pF, -40~+125°C; For CY1 and CY2	cURus
			SUCCESS ELECTRONICS CO LTD	SB	Y1, AC250V, max 4700pF, -40~+125°C; For CY1 and CY2	cURus
			MURATA MFG CO LTD	KX	Y1, AC250V, max 4700pF, -40~+125°C; For CY1 and CY2	cURus
			WALSIN TECHNOLOGY CORP	AH series	Y1, AC250V, max 4700pF, -40~+125°C; For CY1 and CY2	cURus
			JYA-NAY CO LTD	JN	Y1, AC250V, max 4700pF, -25~+125°C; For CY1 and CY2	cURus
			HAOHUA ELECTRONIC CO	CT7	Y1, AC250V, max 4700pF, -30~+125°C; For CY1 and CY2	cURus
			JERRO ELECTRONICS CORP	JX	Y1, AC250V, max 4700pF, -40~+125°C; For CY1 and CY2	cURus
			JYH CHUNG ELECTRONICS CO LTD	JD	Y1, AC400V, max 4700pF, -40~+85°C; For CY1 and CY2	cURus
			WALEX ELECTRONIC (WUXI) CO LTD	T2	Min. 1.6 mm thickness, min. V-0, 130°C	cURus
			WALEX ELECTRONIC (WUXI) CO LTD	T2A	Min. 1.6 mm thickness, min. V-0, 130°C	cURus
			WALEX ELECTRONIC (WUXI) CO LTD	T2B	Min. 1.6 mm thickness, min. V-0, 130°C	cURus
			WALEX ELECTRONIC (WUXI) CO LTD	T4	Min. 1.6 mm thickness, min. V-0, 130°C	cURus
			DONGGUAN HE TONG ELECTRONICS CO LTD	CEM1	Min. 1.6 mm thickness, min. V-0, 130°C	cURus
			DONGGUAN HE TONG ELECTRONICS CO LTD	2V0	Min. 1.6 mm thickness, min. V-0, 130°C	cURus
			DONGGUAN HE TONG ELECTRONICS CO LTD	FR4	Min. 1.6 mm thickness, min. V-0, 130°C	cURus

4.0 Critical Components						
Photo #	Item no. <sup>1</sup>	Name	Manufacturer/ trademark <sup>2</sup>	Type / model <sup>2</sup>	Technical data and securement means	Mark(s) of conformity <sup>3</sup>
6	6	PCB	CHEERFUL ELECTRONIC (HK) LTD	02	Min. 1.6 mm thickness, min. V-0, 130°C	cURus
				03		cURus
				03A		cURus
			DONGGUAN DAYSUN ELECTRONIC CO LTD	DS2	Min. 1.6 mm thickness, min. V-0, 130°C	cURus
			SUZHOU CITY YILIHUA ELECTRONICS CO LTD	YLH-1	Min. 1.6 mm thickness, min. V-0, 130°C	cURus
			SHANGHAI AREX PRECISION ELECTRONIC CO LTD	04V0	Min. 1.6 mm thickness, min. V-0, 130°C	cURus
				03V0	Min. 1.6 mm thickness, min. V-0, 130°C	cURus
				02V0	Min. 1.6 mm thickness, min. V-0, 130°C	cURus
			BRITE PLUS ELECTRONICS (SUZHOU) CO LTD	DKV0-3A	Min. 1.6 mm thickness, min. V-0, 130°C	cURus
				DGV0-3A		cURus
			KUOTIANG ENT LTD	C-2	Min. 1.6 mm thickness, min. V-0, 130°C	cURus
				C-2A		cURus
			PACIFIC WIN INDUSTRIAL LTD	PW-02	Min. 1.6 mm thickness, min. V-0, 130°C	cURus
				PW-03		cURus
			SHENZHEN TONGCHUANGXI N ELECTRONICS CO LTD	TCX	Min. 1.6 mm thickness, min. V-0, 130°C	cURus
			YUANMAN PRINTED CIRCUIT CO LTD	1V0	Min. 1.6 mm thickness, min. V-0, 130°C	cURus
			SUZHOU XINKE ELECTRONICS CO LTD	XK-2	Min. 1.6 mm thickness, min. V-0, 130°C	cURus
			SUZHOU XINKE ELECTRONICS CO LTD	XK-3	Min. 1.6 mm thickness, min. V-0, 130°C	cURus
			KUNSHAN CITY HUA SHENG CIRCUIT BOARD CO LTD	HS-S	Min. 1.6 mm thickness, min. V-0, 130°C	cURus
			JIANGSU DIFEIDA ELECTRONICS CO LTD	DFD-1	Min. 1.6 mm thickness, min. V-0, 130°C	cURus
HUIZHOU SHUNJIA ELECTRONICS CO LTD	SJ-B	Min. 1.6 mm thickness, min. V-0, 130°C	cURus			
Various	Various	Min. 1.6 mm thickness, min. V-0, 130°C, Fully comply with UL 796	cURus			

4.0 Critical Components						
Photo #	Item no. <sup>1</sup>	Name	Manufacturer/ trademark <sup>2</sup>	Type / model <sup>2</sup>	Technical data and securement means	Mark(s) of conformity <sup>3</sup>
19	7	Internal primary wiring	KUNSHAN NEW ZHICHENG ELECTRONICS TECHNOLOGIES CO LTD	1015	Min. 18 AWG, Min. 300V, Min. 80°C	cURus
				1007		
				1185		
				2464		
				2468		
			ZHUANG SHAN CHUAN ELECTRICAL PRODUCTS (KUNSHAN) CO LTD	1015	Min. 18 AWG, Min. 300V, Min. 80°C	cURus
				1007		
				1185		
				2464		
				2468		
			DONGGUAN YUE YANG WIRE & CABLE CO LTD	1015	Min. 18 AWG, Min. 300V, Min. 80°C	cURus
				1007		
				1185		
				2464		
				2468		
			YONG HAO ELECTRICAL INDUSTRY CO LTD	1015	Min. 18 AWG, Min. 300V, Min. 80°C	cURus
				1007		
				1185		
				2464		
				2468		
			HIP TAI ELECTRIC WIRE CO	1015	Min. 18 AWG, Min. 300V, Min. 80°C	cURus
				1007		
				1185		
				2464		
				2468		
			SHENG YU ENTERPRISE CO LTD	1015	Min. 18 AWG, Min. 300V, Min. 80°C	cURus
				1007		
				1185		
				2464		
				2468		
			SUZHOU HONGMENG ELECTRONIC CO LTD	1015	Min. 18 AWG, Min. 300V, Min. 80°C	cURus
				1007		
				1185		
				2464		
				2468		
			SUZHOU YEMAO ELECTRONIC CO LTD	1015	Min. 18 AWG, Min. 300V, Min. 80°C	cURus
1007						
1185						
2464						
2468						
SUZHOU QCTECH CO LTD	1015	Min. 18 AWG, Min. 300V, Min. 80°C	cURus			
	1007					
	1185					
	2464					
	2468					

4.0 Critical Components						
Photo #	Item no. <sup>1</sup>	Name	Manufacturer/ trademark <sup>2</sup>	Type / model <sup>2</sup>	Technical data and securement means	Mark(s) of conformity <sup>3</sup>
19	8	Insulating sheet	FORMEX, DIV OF IL TOOL WORKS INC, FRMRLY FASTEX, DIV OF IL TOOL WORKS INC	FORMEX GK series	V-0, min. 0.4 mm thickness, 115°C; only for GT-41134-0606-W2-TAB	cURus
			MIANYANG LONGHUA FILM CO LTD	PP-WT-20	VTM-0, min. 0.4 mm thickness, 65°C; only for GT-41134-0606-W2-TAB	cURus
			SABIC INNOVATIVE PLASTICS US LLC	FR60 series	V-0, min. 0.4 mm thickness, 130°C; only for GT-41134-0606-W2-TAB	cURus
				FR63 series		
				FR65 series		
				FR7 series		
				FR700 series		
			MIANYANG LONGHUA FILM CO LTD	PP-BK series	V-0, min. 0.4 mm thickness, 80°C; only for GT-41134-0606-W2-TAB	cURus
				PP-WT series		
			ITW ELECTRONICS COMPONENTS/ PRODUCTS (SHANGHAI) CO LTD	FORMEX-18	V-0, min. 0.4 mm thickness, 100°C; only for GT-41134-0606-W2-TAB	cURus
				FORMEX-17		
						GlobTek INC
XF00714I	For GT*41134****, GT*96060**** and GT-41134-0606-W2-TAB with output voltage range: 5.0V-8.9V; Class B with insulation system below.	NR				
TF032		NR				
XF00717	For GT*41134**** and GT*96060**** with output voltage range: 9.0V-14.9V; Class B with insulation system below.	NR				
TF033		NR				
XF00718	For GT*41134**** and GT*96060**** with output voltage range: 15V-18.9V; Class B with insulation system below.	NR				
TF034		NR				
XF00719	For GT*41134**** and GT*96060**** with output voltage range: 19V-24V; Class B with insulation system below.	NR				
TF035		NR				
XF00814	For GT*41134**** and GT*96060**** with output voltage range: 24.1V-36V; Class B with insulation system below.	NR				
XF00841	For GT*41134**** and GT*96060**** with output voltage range: 36.1V-48V; Class B with insulation system below.	NR				

4.0 Critical Components						
Photo #	Item no. <sup>1</sup>	Name	Manufacturer/ trademark <sup>2</sup>	Type / model <sup>2</sup>	Technical data and securement means	Mark(s) of conformity <sup>3</sup>
20	9	Transformer (T1)	ENG ELECTRIC CO LTD	XF00716I	For GT*41134**** and GT*96060**** with output voltage range: 3.3V-4.9V; Class B with insulation system below.	NR
				XF00714I	For GT*41134****, GT*96060**** and GT-41134-0606-W2-TAB with output voltage range: 5.0V-8.9V; Class B with insulation system below.	NR
				TF032		NR
				XF00717	For GT*41134**** and GT*96060**** with output voltage range: 9.0V-14.9V; Class B with insulation system below.	NR
				TF033		NR
				XF00718	For GT*41134**** and GT*96060**** with output voltage range: 15V-18.9V; Class B with insulation system below.	NR
				TF034		NR
				XF00719	For GT*41134**** and GT*96060**** with output voltage range: 19V-24V; Class B with insulation system below.	NR
				TF035		NR
				XF00814	For GT*41134**** and GT*96060**** with output voltage range: 24.1V-36V; Class B with insulation system below.	NR
			XF00841	For GT*41134**** and GT*96060**** with output voltage range: 36.1V-48V; Class B with insulation system below.	NR	
			SHAN DONG BOAM ELECTRIC CO LTD	XF00716I	For GT*41134**** and GT*96060**** with output voltage range: 3.3V-4.9V; Class B with insulation system below.	NR
				XF00714I	For GT*41134****, GT*96060**** and GT-41134-0606-W2-TAB with output voltage range: 5.0V-8.9V; Class B with insulation system below.	NR
				TF032		NR
				XF00717	For GT*41134**** and GT*96060**** with output voltage range: 9.0V-14.9V; Class B with insulation system below.	NR
				TF033		NR
				XF00718	For GT*41134**** and GT*96060**** with output voltage range: 15V-18.9V; Class B with insulation system below.	NR
				TF034		NR
				XF00719	For GT*41134**** and GT*96060**** with output voltage range: 19V-24V; Class B with insulation system below.	NR
				TF035		NR
XF00814	For GT*41134**** and GT*96060**** with output voltage range: 24.1V-36V; Class B with insulation system below.	NR				



4.0 Critical Components						
Photo #	Item no. <sup>1</sup>	Name	Manufacturer/ trademark <sup>2</sup>	Type / model <sup>2</sup>	Technical data and securement means	Mark(s) of conformity <sup>3</sup>
				XF00841	For GT*41134***** and GT*96060***** with output voltage range: 36.1V-48V; Class B with insulation system below.	NR
			WUXI HAOPUWEI ELECTRONICS CO LTD	XF00716I	For GT*41134***** and GT*96060***** with output voltage range: 3.3V-4.9V; Class B with insulation system below.	NR
				XF00714I	For GT*41134***** , GT*96060***** and GT-41134-0606-W2-TAB with output voltage range: 5.0V-8.9V; Class B with insulation system below.	NR
				TF032		NR
				XF00717	For GT*41134***** and GT*96060***** with output voltage range: 9.0V-14.9V; Class B with insulation system below.	NR
				TF033		NR
				XF00718	For GT*41134***** and GT*96060***** with output voltage range: 15V-18.9V; Class B with insulation system below.	NR
				TF034		NR
				XF00719	For GT*41134***** and GT*96060***** with output voltage range: 19V-24V; Class B with insulation system below.	NR
				TF035		NR
				XF00814	For GT*41134***** and GT*96060***** with output voltage range: 24.1V-36V; Class B with insulation system below.	NR
				XF00841	For GT*41134***** and GT*96060***** with output voltage range: 36.1V-48V; Class B with insulation system below.	NR
20	9a	Insulation system (Not shown)		ENG ELECTRIC CO LTD	ENG130-1	Class B
			GLOBTEK INC	GTX-130-TM	Class B	cURus
			SHAN DONG BOAM ELECTRIC CO LTD	BOAM-01	Class B	cURus
				B1	Class B	cURus
			WUXI HAOPUWEI ELECTRONICS CO LTD	ZT-130	Class B	cURus

4.0 Critical Components						
Photo #	Item no. <sup>1</sup>	Name	Manufacturer/ trademark <sup>2</sup>	Type / model <sup>2</sup>	Technical data and securement means	Mark(s) of conformity <sup>3</sup>
23	9b	Bobbin	CHANG CHUN PLASTICS CO LTD	T375J	V-0, 150°C, thickness 0,45 mm min.	cURus
			CHANG CHUN PLASTICS CO LTD	T375HF	V-0, 150°C, thickness 0,45 mm min.	cURus
			CHANG CHUN PLASTICS CO LTD	4130	V-0, 140°C, thickness 0,74 mm min.	cURus
			SUMITOMO BAKELITE CO LTD	PM-9820	V-0, 150°C, thickness 0,45 mm min.	cURus
			HITACHI CHEMICAL CO LTD	CP-J-8800	V-0, 150°C, thickness 0,45 mm min.	cURus
25	9c	Magnet wire	PACIFIC ELECTRIC WIRE & CABLE (SHENZHEN) CO LTD	UEWN/U	MW28-C, 130°C	cURus
				UEWS/U	MW75-C, 130°C	cURus
			JUNG SHING WIRE CO LTD	UEW-4	MW75-C, 130°C	cURus
				UEY-2	MW28-C, 130°C	cURus
			JIANGSU HONGLIU MAGNET WIRE TECHNOLOGY CO LTD	2UEW/130	MW75-C, 130°C	cURus
			CHANGZHOU DAYANG WIRE & CABLE CO LTD	2UEW/130	MW75-C, 130°C	cURus
			WUXI JUFENG COMPOUND LINE CO LTD	2UEWB	MW75#, 130°C	cURus
			JIANGSU DARTONG M & E CO LTD	UEW	MW75-C, 130°C	cURus
			SHANDONG SAINT ELECTRIC CO LTD	UEW/130	MW75#, 130°C	cURus
			ZHEJIANG LANGLI ELECTRIC EQUIPMENTS CO LTD	UEW	MW79#, 130°C	cURus

4.0 Critical Components						
Photo #	Item no. <sup>1</sup>	Name	Manufacturer/ trademark <sup>2</sup>	Type / model <sup>2</sup>	Technical data and securement means	Mark(s) of conformity <sup>3</sup>
23	9d	Triple-insulated wire	GREAT LEOFLON INDUSTRIAL CO LTD	TRW(B)	Reinforced Insulation, rated 130°C (Class B), 1.41 kVolts peak for Information Technology;	cURus
			COSMOLINK CO LTD	TIW-M(B)	Reinforced Insulation, rated 130°C (Class B), 1.41 kVolts peak for Information Technology;	cURus
			FURUKAWA ELECTRIC CO LTD	TEX-E	Reinforced Insulation, rated 130°C (Class B), 1.41 kVolts peak for Information Technology;	cURus
			TOTOKU ELECTRIC CO LTD	TIW-2	Reinforced Insulation, rated 130°C (Class B), 1.40 kVolts peak for Information Technology;	cURus
			E&B TECHNOLOGY CO LTD	E&B-XXXB	Reinforced Insulation, rated 130°C (Class B), 1.40 kVolts peak for Information Technology;	cURus
			E&B TECHNOLOGY CO LTD	E&B-XXXB-1	Reinforced Insulation, rated 130°C (Class B), 1.40 kVolts peak for Information Technology;	cURus
			CHANGYUAN ELECTRONICS (SHENZHEN) CO LTD	CB-TIW	Reinforced Insulation, rated 130°C (Class B), 1.41 kVolts peak for Information Technology;	cURus
			SHENZHEN JIUDING NEW MATERIAL CO LTD	DTIW-B	Reinforced Insulation, rated 130°C (Class B), 1.40 kVolts peak for Information Technology;	cURus
24	9e	Insulating tape	3M COMPANY ELECTRICAL MARKETS DIV (EMD)	1350F-1	130°C	cURus
				1350T-1	130°C	cURus
				44	130°C	cURus
			BONDTEC PACIFIC CO LTD	370S	130°C	cURus
			JINGJIANG YAHUA PRESSURE SENSITIVE GLUE CO LTD	PZ	130°C	cURus
				CT	130°C	cURus
				WF	130°C	cURus
			JINGJIANG JINGYI ADHESIVE PRODUCT CO LTD	JY25-A	130°C	cURus
CHANG SHU LIANG YI TAPE INDUSTRY CO LTD	LY-XX	130°C	cURus			

4.0 Critical Components						
Photo #	Item no. <sup>1</sup>	Name	Manufacturer/ trademark <sup>2</sup>	Type / model <sup>2</sup>	Technical data and securement means	Mark(s) of conformity <sup>3</sup>
21	9f	PTFE tubing	GREAT HOLDING INDUSTRIAL CO LTD	TFT	300V, 200°C	cURus
			GREAT HOLDING INDUSTRIAL CO LTD	TFS	600V, 200°C	cURus
			SHENZHEN WOER HEAT-SHRINKABLE MATERIAL CO LTD	WF	600V, 200°C	cURus
			CHANGYUAN ELECTRONICS (SHENZHEN) CO LTD	CB-TT-T	300V, 200°C	cURus
			CHANGYUAN ELECTRONICS (SHENZHEN) CO LTD	CB-TT-S	600V, 200°C	cURus
1	10	Adhesive-Type Label (Not shown)	DONGGUAN XIANGQUAN PRINTING CO LTD	XQ03	Temperature range: -40~+80°C;	cURus
			FAN JA PAPER PRINTING CO LTD	FJ-03-3	Temperature range: -40~+80°C;	cURus
			FAN JA PAPER PRINTING CO LTD	FJ07	Temperature range: -40~+80°C;	cURus
			E-LIN ADHESIVE LABEL CO LTD	EL-15	Temperature range: -40~+80°C;	cURus
			SHENZHEN CORWIN PRINTING CO LTD	CW-01	Temperature range: -40~+80°C;	cURus
			YUEN CHANG SPECIAL PRINTING (SHENZHEN) CO LTD	JL-08	Temperature range: 0~+80°C;	cURus
			GlobTek	Various	Permanently secured Engraving or Silkscreen or Laser printing	NR
			Various	Various	Temperature range: min. -40~+80°C; Certified according UL 969.	cETLus cULus cCSAus

NOTES:

- 1) Not all item numbers are indicated (called out) in the photos, as their location is obvious.
- 2) "Various" means any type, from any manufacturer that complies with the "Technical data and securement means" and meets the "Mark(s) of conformity" can be used.
- 3) Indicates specific marks to be verified, which assures the agreed level of surveillance for the component. "NR" indicates Unlisted and only visual examination is necessary. "See 5.0" indicates Unlisted components or assemblies to be evaluated periodically refer to section 5.0 for details.

**5.0 Critical Unlisted CEC Components**

**No Unlisted CEC components are used in this report.**



## 6.0 Critical Features

Recognized Component - A component part, which has been previously evaluated by an accredited certification body with restrictions and must be evaluated as part of the basic product considering the restrictions as specified by the Conditions of Acceptability.

Listed Component - A component part, which has been previously Listed or Certified by an accredited Certification Organization with no restrictions and is used in the intended application within its ratings.

Unlisted Component - A part that has not been previously evaluated to the appropriate designated component standard. It may also be a Listed or Recognized component that is being used outside of its evaluated Listing or component recognition.

Critical Features/Components - An essential part, material, subassembly, system, software, or accessory of a product that has a direct bearing on the product's conformance to applicable requirements of the product standard.

Construction Details - For specific construction details, reference should be made to the photographs and descriptions. All dimensions are approximate unless specified as exact or within a tolerance. In addition to the specific construction details described in this Report, the following general requirements also apply.

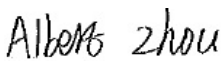
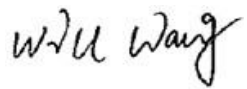
1. Spacing - In primary circuits, 2.22 mm minimum spacing are maintained through air and 2.4 mm minimum spacing are maintained over surfaces of insulating material between current-carrying parts of opposite polarity and 4.44 mm minimum spacing are maintained through air and 4.8 mm minimum spacing are maintained over surfaces between such current-carrying parts and dead-metal parts or low voltage isolated circuits.
2. Mechanical Assembly - Components such as switches, fuseholders, connectors, wiring terminals and display lamps are mounted and prevented from shifting or rotating by the use of lockwashers, starwashers, or other mounting format that prevents turning of the component.
3. Corrosion Protection - All ferrous metal parts are protected against corrosion by painting, plating or the equivalent.
4. Accessibility of Live Parts - For adapter models, all uninsulated live parts in primary circuitry are housed within a non-metallic enclosure constructed with no openings and metal enclosure earthed with ventilation holes other than those specifically described in Sections 4 and 5.
5. Grounding - For adapter models without earthing connection, the products are not provided with grounding means as they are reinforced insulated.
6. Polarized Connection - This product is provided with a non-polarized power supply connection.
7. Internal Wiring - Internal wiring is routed away from sharp or moving parts. Internal wiring leads terminating in soldered connections are made mechanically secure prior to soldering. Recognized Component separable (quick disconnect) connectors of the positive detent type, closed loop connectors, or other types specifically described in the text of this report are also acceptable as internal wiring terminals. At points where internal wiring passes through metal walls or partitions, the wiring insulation is protected against abrasion or damage by plastic bushings or grommets. All wiring is minimum 24AWG, with a minimum rating of 300V, 80°C.
8. Schematics - Refer to Illustration No(s). 2a&2b&2c, 3a&3b&3c for schematics & PCB layout requiring verification during Field Representative Inspection Audits.
9. Transformer - Supplier records must be provided that indicate the received shipment of transformers (section 4.0, item 9) was constructed as indicated in Illustrations 5. These records must be available at the factory for inspection on every received shipment.
10. Markings - The product is marked on a labeling system as described in item No. 10 of Section 4.0 as follows: brand name, model number, electrical ratings, manufacturer. Refer to Illustration No. 4 for details.
11. Safety Instructions - Instructions for installation and use of this product are provided by the manufacturer. They are kept in file and need not be repeated here.

**7.0 Illustrations**

**Illustration 1 - Model list**

Model	Output voltage	Max. output current	Max. output power
GT*41134**03** GT*96060**03**	3.3V	1.8A	6.0W
GT*41134**04** GT*96060**04**	3.4-4V	1.76A	6.0W
GT*41134**06** GT*96060**06**	4.1-6V	1.46A	6.0W
GT*41134**12** GT*96060**12**	6.1-12V	0.98A	6.0W
GT*41134**15** GT*96060**15**	12.1-15V	0.50A	6.0W
GT*41134**18** GT*96060**18**	15.1-18V	0.40A	6.0W
GT*41134**24** GT*96060**24**	18.1-24V	0.33A	6.0W
GT*41134**36** GT*96060**36**	24.1-36V	0.25A	6.0W
GT*41134**48** GT*96060**48**	36.1-48V	0.16A	6.0W
GT-41134-0606-W2-TAB	6.0V	1.0A	6.0W
GTM96060**06-1.0	5.0V	1.5A	7.5W

8.0 Test Summary					
Evaluation Period	5-Mar-2020 to 12-Aug-2020		Project No.	200300447SHA	
Sample Rec. Date	5-Mar-2020	Condition	Prototype	Sample ID.	0200305-15-001-028
Test Location	Building No.86, 1198 Qinzhou Road (North), Shanghai 200233, China				
Test Procedure	Testing Lab				
Determination of the result includes consideration of measurement uncertainty from the test equipment and methods. The product was tested as indicated below with results in conformance to the relevant test criteria.					
The following tests were performed:					
Test Description	Audio/Video, Information And Communication Technology Equipment - Part 1: Safety Requirements [UL 62368-1:2014 Ed.2]  Audio/Video, Information and Communication Technology Equipment - Part 1: Safety Requirements (R2019) [CSA C22.2#62368-1:2014 Ed.2]				
Energy source classifications	4.2				
Protection against energy sources	4.3				
Classification and limits of electrical energy sources	5.2				
Classification of power sources (PS) and potential	6.2				
10 N steady force test	4.6.2				
Temperature test for insulating materials and touch temperature	5.4.1.4, 9.0				
Determination of working voltage test	5.4.1.8				
Ball pressure test	5.4.1.10.3				
Clearances and creepage distances measurement	5.4.2, 5.4.3				
Solid insulation measurement	5.4.4				
Humidity conditioning test	5.4.8				
Electric strength test	5.4.9				
Capacitor discharging test	5.5.2.2				
Thermal energy source classifications	9.2				
Input test	B.2.5				
Simulated single fault conditions tes	B.4				
Marking durability test	F.3.10				
Transformer overload tests	T.2				
Steady force test – 10 N	T.2				
Steady force test – 250 N	T.5				
Drop test	T.7				
Stress relief Test	T.8				
Determination of accessible parts test	V.1				

8.1 Signatures			
A representative sample of the product covered by this report has been evaluated and found to comply with the applicable requirements of the standards indicated in Section 1.0.			
Completed by:	Albert Zhou	Reviewed by:	Will Wang
Title:	Engineer	Title:	Assistant Manager
Signature:		Signature:	

**9.0 Correlation Page For Multiple Listings**

The following products, which are identical to those identified in this report except for model number and Listee name, are authorized to bear the ETL label under provisions of the Intertek Multiple Listing Program.

BASIC LISTEE	GlobTek, Inc.
Address	186 Veterans Dr. Northvale, NJ 07647
Country	USA
Product	ITE/ICT Power Supply

MULTIPLE LISTEE 1	None
Address	
Country	
Brand Name	
ASSOCIATED MANUFACTURER	
Address	
Country	
MULTIPLE LISTEE 1 MODELS	BASIC LISTEE MODELS

MULTIPLE LISTEE 2	None
Address	
Country	
Brand Name	
ASSOCIATED MANUFACTURER	
Address	
Country	
MULTIPLE LISTEE 2 MODELS	BASIC LISTEE MODELS

MULTIPLE LISTEE 3	None
Address	
Country	
Brand Name	
ASSOCIATED MANUFACTURER	
Address	
Country	
MULTIPLE LISTEE 3 MODELS	BASIC LISTEE MODELS

## **10.0 General Information**

The Applicant and Manufacturer have agreed to produce, test and label ETL Listed products in accordance with the requirements of this Report. The Manufacturer has also agreed to notify Intertek and to request authorization prior to using alternate parts, components or materials.

### COMPONENTS

Components used shall be those itemized in this Intertek report covering the product, including any amendments and/or revisions.

### LISTING MARK

The ETL Listing mark applied to the products shall either be separable in form, such as labels purchased from Intertek, or on a product nameplate or other media only as specifically authorized by Intertek. Use of the mark is subject to the control of Intertek.

The mark must include the following four items:

- 1) applicable country identifiers "US" and/or "C" or "US", "C" and "EU"
- 2) the word "Listed" or "Classified" or "Recognized Component" (whichever is appropriate)
- 3) a control number issued by Intertek
- 4) a product descriptor that identifies the standards used for certification. Example:

**For US standards**, the words, "Conforms to" shall appear with the standard number along with the word, "Standard" or "Std." Example: "Conforms to ANSI/UL Std. XX."

**For Canadian standards**, the words "Certified to CAN/CSA Standard CXX No. XX." shall be used, or abbreviated, "Cert. to CAN/CSA Std. CXX No. XX."

Can be used together when both standards are used.

**Note: A facsimile must be submitted to Intertek, Attn: Follow-up Services for approval prior to use.**

The facsimile need not have a control number. A control number will be issued **after signed Certification Agreements** have been received by the Follow-up Services office, approval of the facsimile of your proposed Listing Mark, satisfactory completion of the Listing Report, and scheduling of a factory assessment in your facility.

### MANUFACTURING AND PRODUCTION TESTS

Manufacturing and Production Tests shall be performed as required in this Report.

### FOLLOW-UP SERVICE

Periodic unannounced audits of the manufacturing facility (and any locations authorized to apply the mark) shall be scheduled by Intertek. An audit report shall be issued after each visit. Special attention will be given to the following:

1. Conformance of the manufactured product to the descriptions in this Report.
2. Conformance of the use of the ETL mark with the requirements of this Report and the Certification Agreement.
3. Manufacturing changes.
4. Performance of specified Manufacturing and Production Tests.

In the event that the Intertek representative identifies non-conformance(s) to any provision of this Report, the Applicant shall take one or more of the following actions:

1. Correct the non-conformance.
2. Remove the ETL Mark from non-conforming product.
3. Contact the issuing product safety evaluation center for instructions.



### **10.1 Evaluation of Unlisted Components**

Because Unlisted Components are uncontrolled, and they do not fall under a third party follow up program, Intertek may require these components to be tested and/or evaluated at least once annually, more often for certain components, as part of the independent certification process. The Unlisted Components in Section 5.0 require testing and/or evaluation as indicated.

**The Applicant will be notified, in writing, via the applicable contact methods, as defined in Section 1.0, when these components must be selected and sent to Component Evaluation Center (CEC) for re-evaluation.**

**Due to particular testing requirements, some components may be requested to be shipped to specific labs. Thus, specific shipment destination(s) for each sample will be provided in the written notification.**

Managing CEC Location:

Intertek Testing Services Shanghai Limited  
ETL Component Evaluation Center  
Building No. 86, 1198 Qinzhou Road (North)  
Shanghai 200233, China  
Attn: Ms. Angela Han

Sample Disposition: Due to the destructive nature of the testing, all samples will be discarded at the conclusion of testing unless, the manufacturer specifically requests the return of the samples. The request for return must accompany the initial component shipment.

**11.0 Manufacturing and Production Tests**

The manufacturer agrees to conduct the following Manufacturing and Production Tests as specified:

**Required Tests**

Dielectric Voltage Withstand Test

**11.1 Dielectric Voltage Withstand Test**

Method

One hundred percent of production of the products covered by this Report shall be subjected to a routine production line dielectric withstand test.

The test shall be conducted on products, which are fully assembled. Prior to applying the test potential, all switches, contactors, relays, etc., should be closed so that all primary circuits are energized by the test potential. If all primary circuits cannot be tested at one time, then separate applications of the test potential shall be made.

The test voltage specified below shall be applied between primary circuits and accessible dead-metal parts. The test voltage may be gradually increased to the specified value but must be maintained at the specified value for one second or one minute as required.

Test Equipment

The test equipment shall incorporate a transformer with an essentially sinusoidal output, a means to indicate the applied test potential, and an audible and/or visual indicator of dielectric breakdown.

The test equipment shall incorporate a voltmeter in the output circuit to indicate directly the applied test potential if the rated output of the test equipment is less than 500VA.

If the rated output of the test equipment is 500VA or more, the applied test potential may be indicated by either:

- 1 - a voltmeter in the primary circuit;
- 2 - a selector switch marked to indicate the test potential; or
- 3 - a marking in a readily visible location to indicate the test potential for test equipment having a single test potential output.

In cases 2 and 3, the test equipment shall include a lamp or other visual means to indicate that the test potential is present at the test equipment output. All test equipment shall be maintained in current calibration.

**Products Requiring Dielectric Voltage Withstand Test:**

<u>Product</u>	<u>Test Voltage</u>	<u>Test Time</u>
<b>Product - One sample from each shipment of Section 4.0 item 9:</b>		
Between primary circuit and secondary output	4000Vdc	1 min
Between secondary circuit and core	4000Vdc	1 min
<b>Product - Model XF00841 from each shipment of Section 4.0 item 9:</b>		
Between primary circuit and secondary output	4000Vdc	1 min
Between secondary circuit and core	4000Vdc	1 min
<b>Product</b>	<b><u>Test Voltage</u></b>	<b><u>Test Time</u></b>
All products covered by this Report.		
Between input circuit and accessible enclosure surface	3600Vdc	1 s
Between input circuit and secondary circuit/output terminal	3600Vdc	1 s

