

UL TEST REPORT AND PROCEDURE

Standard:	UL 60950-1, 2nd Edition, 2011-12-19 (Information Technology Equipment - Safety - Part 1: General Requirements) CAN/CSA C22.2 No. 60950-1-07, 2nd Edition, 2011-12 (Information Technology Equipment - Safety - Part 1: General Requirements)
Certification Type:	Listing
CCN:	QQGQ, QQGQ7 (Power Supplies for Information Technology Equipment Including Electrical Business Equipment)
Product:	Switching Power Adapter
Model:	GTM91099-WWVV-X.X-AB series, M can be "M" or "-" for market identification and not related to safety WW is the rated output wattage designation, with a maximum value of "60"; VV is the standard rated output voltage designation, with a maximum value of "48"; -X.X denotes the optional deviation, subtracted or added from standard output voltage in 0.1 volt increments or blank to indicate the no voltage different; VV-X.X together denotes the voltage range 5V to 48V; A:T is External/Desktop model B can be 2 or 3A, 2 presents Class II, 3A presents Class I;
Rating:	Input: 100-240Vac, 50-60Hz, MAX. 1.5A or 1.5A Output: Refer to Enclosure ID: 7-01 for detail of output rating. For Model GTM91099-3009-4.0-T2 and GTM91099-3009-4.0-T3A , Output 5Vdc/3.0A at Tma=70 Degree C.
Applicant Name and Address:	GLOBTEK (HONG KONG) LTD UNIT 1402, BENSON TOWER 74 HUNG TO RD KWUN TONG KOWLOON HONG KONG

This is to certify that representative samples of the products covered by this Test Report have been investigated in accordance with the above referenced Standards. The products have been found to comply with the requirements covering the category and the products are judged to be eligible for Follow-Up Service under the indicated Test Procedure. The manufacturer is authorized to use the UL Mark on such products which comply with this Test Report and any other applicable requirements of UL LLC ('UL') in accordance with the Follow-Up Service Agreement. Only those products which properly bear the UL Mark are considered as being covered by UL's Follow-Up Service under the indicated Test Procedure.

The applicant is authorized to reproduce the referenced Test Report provided it is reproduced in its entirety.

Issue Date: 2013-02-05
2016-08-05

Page 2 of 16

Report Reference #

E341351-A59-UL

Any information and documentation involving UL Mark services are provided on behalf of UL LLC (UL) or any authorized licensee of UL.

Prepared by: Leung Chi Wah

Reviewed by: Paul Wan

Supporting Documentation

The following documents located at the beginning of this Procedure supplement the requirements of this Test Report:

- A. Authorization - The Authorization page may include additional Factory Identification Code markings.
- B. Generic Inspection Instructions -
 - i. Part AC details important information which may be applicable to products covered by this Procedure. Products described in this Test Report must comply with any applicable items listed unless otherwise stated in the body of this Test Report.
 - ii. Part AE details any requirements which may be applicable to all products covered by this Procedure. Products described in this Test Report must comply with any applicable items listed unless otherwise stated in the body of each Test Report.
 - iii. Part AF details the requirements for the UL Certification Mark which is not controlled by the technical standard used to investigate these products. Products are permitted to bear only the Certification Mark(s) corresponding to the countries for which it is certified, as indicated in each Test Report.

Product Description

The equipment is a Power Adaptor, Electronic components mounted to PWB, and housed in plastic enclosure, with Class II appliance inlet or Class I Inlet with desktop construction which intended to provide electrical power to Information technology equipment.

Model Differences

Model Differences can refer to enclosure 7-01.

Technical Considerations

- Equipment mobility : transportable
- Connection to the mains : pluggable A
- Operating condition : continuous
- Access location : operator accessible
- Over voltage category (OVC) : OVC II
- Mains supply tolerance (%) or absolute mains supply values : +10%, -10% (Manufacturer declared)
- Tested for IT power systems : No
- IT testing, phase-phase voltage (V) : N/A
- Class of equipment : With Class I and Class II (double insulated) construction
- Considered current rating of protective device as part of the building installation (A) : 20 A
- Pollution degree (PD) : PD 2
- IP protection class : IP X0
- Altitude of operation (m) : Up to 3000m
- Altitude of test laboratory (m) : Up to 3000m
- Mass of equipment (kg) : <8 kg
- The product was submitted and evaluated for use at the maximum ambient temperature (Tma) permitted by the manufacturer's specification of: 40°C, 70°C (for Models GTM91099-3009-4.0-T2 and GTM91099-3009-4.0-T3A only)
- The means of connection to the mains supply is: Detachable power cord

- The product is intended for use on the following power systems: TN
- The equipment disconnect device is considered to be: Appliance inlet
- The following accessible locations (with circuit/schematic designation) are within a limited current circuit: CY1
- The following circuit locations (with circuit/schematic designation) were investigated as a limited power source (LPS): All Output
- The following are available from the Applicant upon request: Installation (Safety) Instructions / Manual

Additional Information

Revision (Project 4787098106)

- (1) Evaluate the Model GTM91099-3009-4.0-T2 and Model GTM91099-3009-4.0-T3A in Maximum Room Ambient Temperature 70 deg ree C;
- (2) Add the Label Artwork for Model GTM91099-3009-4.0-T2 and Model GTM91099-3009-4.0-T3A in Enclosure;
- (3) Add "Optional" for Fuse (FS2).

Revision (Project 4787488952)

- (1) correct model list
- (2) correct 1185 or 2464 to various for DC ouput cord in CCL
- (3) add Tubing (optional alternate used for HS2) in CCL as it was missed in original report
- (4) correct type LY-20 to LY-XX for Insulation tape provided on HS2
- (5) add label (Provided if not using engraving or silkscreen or Laser printing)with various manufacturer & type as it was missed in original report

Additional Standards

The product fulfills the requirements of: N/A

Markings and instructions

Clause Title	Marking or Instruction Details
Warning to service personnel	"CAUTION: Double pole/neutral fusing"
1.7.1 Power rating - Ratings	Ratings (voltage, frequency/dc, current)
1.7.1 Power rating - Company identification	Listee's or Recognized company's name, Trade Name, Trademark or File Number
1.7.1 Power rating - Model	Model Number
1.7.1 Power rating - Class II symbol	Symbol for Class II construction (Class II model only)

1.7.6 Fuses - Rating	Rated current and voltage and type located on or adjacent to fuse or fuseholder.
Special Instructions to UL Representative	
--	

Production-Line Testing Requirements

Electric Strength Test Special Constructions - Refer to Generic Inspection Instructions, Part AC for further information.

Model	Component	Removable Parts	Test probe location	V rms	V dc	Test Time, s
All models	T1	N/A	Primary to Secondary	300 0	---	1

Earthing Continuity Test Exemptions - This test is not required for the following models:

GTM91099-WWVV-X.X-AB series (Class II product)

Electric Strength Test Exemptions - This test is not required for the following models:

N/A

Electric Strength Test Component Exemptions - The following solid-state components may be disconnected from the remainder of the circuitry during the performance of this test:

N/A

Sample and Test Specifics for Follow-Up Tests at UL

Model	Component	Material	Test	Sample(s)	Test Specifics
N/A					

1.5.1	TABLE: list of critical components					Pass
Object/part or Description	Manufacturer/ trademark	type/model	technical data	Product Category CCN(s)	Required Marks of Conformity	Supplement ID
Plastic Enclosure	SABIC INNOVATIVE PLASTICS B V	CX7211(GG)	Rated min V-0, 90 degC. Overall around 113.97 by 53.47 by 19.25mm. Min. 2.1 mm thick. See enclosure 4-01 for details of enclosure dimension.	QMFZ2/8	UL/cUL (E45329)	
Insulator	SKC Co LTD	SH71S	Provided between PWB and Enclosure. Rated VTM-2, 105 degC. Overall measured 106.86 mm by 46.72 mm, 0.43 mm thick.	QMFZ2	UL (E74359)	
Insulator (Alternate)	TORAY	Lumirror H10	Provided between PWB and Enclosure. Rated VTM-2, 105 degC. Overall measured 106.86 mm by 46.72 mm, 0.43 mm thick.	QMFZ2	UL (E86511)	
Insulator (Alternate)	FORMEX	FORMEX GK	Provided between PWB and Enclosure. Rated VTM-2, 105 degC. Overall measured 106.86 mm by 46.72 mm, 0.43 mm thick.	QMFZ2	UL (E121855)	
Insulator (Alternate)	SABIC INNOVATIVE PLASTICS JAPAN L L C	FR60 (GG1), FR63 (GG1), FR65 (GG1), FR7 (GG1), FR700	Provided between PWB and Enclosure. Rated VTM-2, 105 degC. Overall measured 106.86 mm by 46.72 mm, 0.43 mm thick.	QMFZ2	UL (E207780)	
Appliance –Inlet (For T2 series)	ZHEJIANG LECI ELECTRONICS CO LTD	DB-8	Rated 5A, 250Vac, 105 degC	AXUT2/8	UL/cUL (E302229)	
Appliance –Inlet (For T2 series) (Alternate)	KUNSHAN DLK ELECTRONICS TECHNOLOGY CO LTD	CDJ-2	Rated 2.5A, 250Vac, 125 degC	AXUT2/8	UL/cUL (E317189)	
Appliance –Inlet (For T2	SHENZHEN	CDJ-2	Rated 2.5A, 250Vac, 125 degC	AXUT2/8	UL/cUL	

series) (Alternate)	DELIKANG ELECTRONICS TECHNOLOGY CO LTD				(E217394)	
Appliance –Inlet (For T2 series) (Alternate)	RICH BAY CO LTD	R-201SN90	Rated 2.5A, 250Vac, 105 degC	AXUT2/8	UL/cUL (E184638)	
Appliance –Inlet (For T2 series) (Alternate)	SUN FAIR ELECTRIC WIRE & CABLE (HK) CO LTD	S-01	Rated 2.5A, 250Vac.	AXUT2/8	UL/cUL (E226643)	
Appliance –Inlet (For T2 series) (Alternate)	INALWAYS CORP	0721 series	Rated 2.5A, 250Vac, 105 degC	AXUT2	UL (E94191)	
Appliance –Inlet (For T2 series) (Alternate)	TECX-UNIONS TECHNOLOGY CORP	SO-222 series	Rated 2.5A, 250Vac, 75 degC	AXUT2	UL (E220004)	
Appliance –Inlet (For T2 series) (Alternate)	SUPERCOM ELECTRONICS CO LTD	SC-12S series	Rated 2.5A, 250Vac, 75 degC	AXUT2/8	UL/cUL (E152973)	
Appliance –Inlet (for T3A series)	SUPERCOM ELECTRONICS CO LTD	SC-14 series	Rated 2.5A, 250Vac, 75 degC	AXUT2/8	UL/cUL (E152973)	
Appliance –Inlet (Alternate) (for T3A series)	ZHEJIANG LECI ELECTRONICS CO LTD	DB-6	Rated 5A, 250Vac, 105 degC	AXUT2/8	UL/cUL (E302229)	
Appliance –Inlet (Alternate) (for T3A series)	TECX-UNIONS TECHNOLOGY CORP	TU-333 series	Rated 2.5A, 250Vac, 75 degC	AXUT2	UL (E220004)	
Appliance –Inlet (Alternate) (for T3A series)	SUN FAIR ELECTRIC WIRE & CABLE (HK) CO LTD	S-02	Rated 2.5A, 250Vac.	AXUT2/8	UL/cUL (E226643)	
Appliance –Inlet (Alternate) (for T3A series)	INALWAYS CORP	0724series	Rated 2.5A, 250Vac, 105 degC	AXUT2	UL (E94191)	
Appliance –Inlet (Alternate) (for T3A series)	RICH BAY CO LTD	R-30790	Rated 2.5A, 250Vac, 105 degC	AXUT2/8	UL/cUL (E184638)	
Earthing Conductor (For class I series)	Various	Various	Yellow and Green in Color, provided between inlet and	AVLV2/8	UL, cUL	

			PWB secondary side. Rated min 300V, min105 degC, VW-1, min18 AWG			
Fuse (FS1)	WALTER ELECTRONIC CO LTD	ICP	Rated 3.15A, 250Vac.	JDYX/7	UL/cUL (E56092)	
Fuse (FS1) (Alternate)	CONQUER ELECTRONICS CO LTD	MST	Rated 3.15A, 250Vac.	JDYX2/8	UL/cUL (E82636)	
Fuse (FS1) (Alternate)	WALTER ELECTRONIC CO LTD	2010	Rated 3.15A, 250Vac.	JDYX2/8	UL/cUL (E56092)	
Fuse (FS1) (Alternate)	SUNNY EAST ENTERPRISE CO LTD	TSP	Rated 3.15A, 250Vac.	JDYX2/8	UL/cUL (E133774)	
Fuse (FS1) (Alternate)	Various	Various	Rated 3.15A, 250Vac.	JDYX/7	UL/cUL	
Fuse (FS2) (Optional)	WALTER ELECTRONIC CO LTD	ICP	Rated 3.15A, 250Vac.	JDYX/7	UL/cUL (E56092)	
Fuse (FS2) (Alternate) (Optional)	CONQUER ELECTRONICS CO LTD	MST	Rated 3.15A, 250Vac.	JDYX2/8	UL/cUL (E82636)	
Fuse (FS2) (Alternate) (Optional)	WALTER ELECTRONIC CO LTD	2010	Rated 3.15A, 250Vac.	JDYX2/8	UL/cUL (E56092)	
Fuse (FS2) (Alternate) (Optional)	SUNNY EAST ENTERPRISE CO LTD	TSP	Rated 3.15A, 250Vac.	JDYX2/8	UL/cUL (E133774)	
Fuse (FS2) (Alternate) (Optional)	Various	Various	Rated 3.15A, 250Vac.	JDYX/7	UL/cUL	
Varistor (MOV1) (optional) (Alternate)	BRIGHTKING (SHENZHEN) CO LTD	471KD07, 471KD10, 471KD14	Rated 300Vac.	VZCA2/8	UL/cUL (E327997)	
Varistor (MOV1) (optional) (Alternate)	WALSIN TECHNOLOGY CORP	VZ07D471K, VZ10D471K, VZ14D471K	Rated 300Vac.	VZCA2/8	UL/cUL (E309297)	
Varistor (MOV1)	LIEN SHUN	07D471K,	Rated 300Vac.	VZCA2/8	UL/cUL	

(optional) (Alternate)	ELECTRONICS CO LTD	10D471K, 14D471K			(E315524)	
Varistor (MOV1) (optional) (Alternate)	CERAMATE TECHNICAL CO LTD	GNR07D471K, GNR10D471K, GND14D471K	Rated 300Vac.	VZCA2/8	UL/cUL (E315429)	
Bleeder Resistors (RS2, RS1)	Various	Various	Max. 1.5Mohm, 1/4W	--	--	
X-Capacitor (CX1) (Optional)	CHENG TUNG INDUSTRIAL CO LTD	CTX	Rated 0.33uF max. Min 250Vac, 100degC, marked X1 or X2	FOWX2/8	UL/cUL (E193049)	
X-Capacitor (CX1) (Optional) (Alternate)	WINDAY ELECTRONIC INDUSTRIAL CO LTD	MPX	Rated 0.33uF max. Min 250Vac, 100degC, marked X1 or X2	FOWX2/8	UL/cUL (E302125)	
X-Capacitor (CX1) (Optional) (Alternate)	ULTRA TECH XIPHI ENTERPRISE CO LTD	HQX	Rated 0.33uF max. Min 250Vac, 100degC, marked X1 or X2	FOWX2/8	UL/cUL (E183780)	
X-Capacitor (CX1) (Optional) (Alternate)	OKAYA ELECTRIC INDUSTRIES CO LTD	RE series	Rated 0.33uF max. Min 250Vac, 100degC, marked X1 or X2	FOWX2/8	UL/cUL (E47474)	
X-Capacitor (CX1) (Optional) (Alternate)	VISHAY CAPACITORS BELGIUM N V	F1772	Rated 0.33uF max. Min 250Vac, 100degC, marked X1 or X2	FOWX2/8	UL/cUL (E100682)	
X-Capacitor (CX1) (Optional) (Alternate)	TENTA ELECTRIC INDUSTRIAL CO LTD	MEX	Rated 0.33uF max. Min 250Vac, 100degC, marked X1 or X2	FOWX2/8	UL/cUL (E186475)	
X-Capacitor (CX1) (Optional) (Alternate)	DAIN ELECTRONICS CO LTD	MEX, MPX, NPX	Rated 0.33uF max. Min 250Vac, 100degC, marked X1 or X2	FOWX2/8	UL/cUL (E147776)	
X-Capacitor (CX1) (Optional) (Alternate)	SINHUA ELECTRONICS (HUZHOU) CO LTD	MPX	Rated 0.33uF max. Min 250Vac, 100degC, marked X1 or X2	FOWX2/8	UL/cUL (E237560)	
X-Capacitor (CX1) (Optional) (Alternate)	FOSHAN SHUNDE CHUANG GE ELECTRONIC INDUSTRIAL CO LTD	MKP-X2	Rated 0.33uF max. Min 250Vac, 100degC, marked X1 or X2	FOWX2/8	UL/cUL (E308832)	

X-Capacitor (CX1) (Optional) (Alternate)	SHUN DE DAHUA ELECTRIC CO LTD	HD	Rated 0.33uF max. Min 250Vac, 100degC, marked X1 or X2	FOWX2/8	UL/cUL (E227157)	
Y-Capacitors (CY1, CY2) –(Optional)	WELSON INDUSTRIAL CO LTD	WD	Rated max.2200pF Min 250V, 105degC, marked with Y1 or Y2	FOWX2/8	UL/cUL (E104572)	
Y-Capacitors (CY1, CY2) –(Optional) (Alternate)	SUCCESS ELECTRONICS CO LTD	SE, SB	Rated max.2200pF Min 250V, 105degC, marked with Y1 or Y2	FOWX2/8	UL/cUL (E114280)	
Y-Capacitors (CY1, CY2) –(Optional) (Alternate)	TDK CORP	CD	Rated max.2200pF Min 250V, 105degC, marked with Y1 or Y2	FOWX2/8	UL/cUL (E37861)	
Y-Capacitors (CY1, CY2) –(Optional) (Alternate)	WALSIN TECHNOLOGY CORP	AH	Rated max.2200pF Min 250V, 105degC, marked with Y1 or Y2	FOWX2/8	UL/cUL (E146544)	
Y-Capacitors (CY1, CY2) –(Optional) (Alternate)	JYA-NAY CO LTD	JN	Rated max.2200pF Min 250V, 105degC, marked with Y1 or Y2	FOWX2/8	UL/cUL (E201384)	
Y-Capacitors (CY1, CY2) –(Optional) (Alternate)	KUNSHAN WANSHEG ELECTRONICS CO LTD	CT7	Rated max.2200pF Min 250V, 105degC, marked with Y1 or Y2	FOWX2/8	UL/cUL (E249006)	
Y-Capacitors (CY1, CY2) –(Optional) (Alternate)	MURATA MFG CO LTD	KX	Rated max.2200pF Min 250V, 105degC, marked with Y1 or Y2	FOWX2/8	UL/cUL (E37921)	
Y-Capacitors (CY1, CY2) –(Optional) (Alternate)	mitsubishi MATERIALS CORP	AH	Rated max.2200pF Min 250V, 105degC, marked with Y1 or Y2	FOWX2/8	UL/cUL (E89615)	
Y-Capacitors (CY1, CY2) –(Optional) (Alternate)	HAOHUA ELECTRONIC CO	CT7	Rated max.2200pF Min 250V, 105degC, marked with Y1 or Y2	FOWX2/8	UL/cUL (E233106)	
Line Filter (LF2) (optional)	GLOBTEK	NF00031	130 degree C (OBMW2) coil wound on a core. See Enclosure 4-06 for details.	--	--	
- Core	--	--	Ferrite core, approximate overall 16 by 12 by 8 mm.	--	--	
- Wire	TA YA ELECTRIC	TYPU-	MW 75-C, 130 Degree C	OBMW2	UL/cUL	

	WIRE & CABLE CO LTD	130(UFW/QA -B)			(E84201)	
- Varnish	E57	SHENZHEN CHANGXIAN TECHNOLOGY CO., LTD	130 degree C	--	--	
Line Filter (LF2) (optional) (Alternate)	Various	Various	130 degree C (OBMW2) coil wound on a core.	--	--	
Transistor (Q1)	Various	Various	Rated min 10A, Min. 600V	--	--	
Transformer (T1)			(OBJY2) Class B. See enclosure 4-05 for construction details.	--	--	
- Insulation system used in T1			Class 130 (B) Insulation System.	OBJY2/8	UL/cUL (E308897)	
- Primary winding used in T1	Various	Various	Polyurethane with or without overcoat Polyamide, 130 degC min. Type MW-75.	OBMW2	UL	
- Secondary winding used in T1	GREAT LEOFLON INDUSTRIAL CO LTD	TRW(B)	Rated 130 degC Triple insulated wire	OBJT2	UL (E211989)	
- Bobbin used in T1	SUMITOMO BAKELITE CO LTD	PM-9820	Phenolic, rated V-0, 150 degC	QMFZ2	UL (E41429)	
- Bobbin used in T1 (Alternate)	CHANG CHUN PLASTICS CO LTD	T375J	Phenolic, rated V-0, 150 degC,	QMFZ2	UL (E59481)	
- Insulation Tape used in T1	3M COMPANY ELECTRICAL MARKETS DIV (EMD)	1350F, 44	Rated 130 degC	OANZ2	UL (E17385)	
- Varnish used in T1	P D GEORGE/VIKING	V1630FS	Rated 130 degC	OBOR2	UL (E73071)	
- Varnish used in T1 (Alternate)	JOHN C DOLPH CO	BC-346A	Rated 130 degC	OBOR2	UL (E51047)	
- Tube	GREAT HOLDING INDUSTRIAL CO LTD	TFL	VW-1. Rated 150V, 200 degC	YDPU2	UL (E156256)	
Transformer (T1)	GLOBTEK INC /	XF00694,	(OBJY2) Class B. See	--	--	

(Alternate)			enclosure 4-05 for details.			
- Insulation system used in T1	GLOBTEK INC	GTX-130-TM	Class 130 (B) Insulation Systems.	OBJY2	UL (E243347)	
- Insulation system used in T1 (Alternate)	WUXI ZHONGTONG ELECTRONICS CO LTD	ZT-130	Class 130 (B) Insulation Systems.	OBJY2	UL (E315275)	
- Primary winding used in T1	Various	Various	Polyurethane with or without overcoat Polyamide, 130 degC Min. Type MW-75 or MW-28.	OBMW2	UL	
- Secondary winding used in T1	GREAT LEOFLON INDUSTRIAL CO LTD	TRW(B)	Rated 130 degC Triple insulated wire	OBJT2	UL (E211989)	
- Secondary winding used in T1 (Alternate)	COSMOLINK CO LTD	TIW-M	Rated 130 degC Triple insulated wire	OBJT2	UL (E213764)	
- Bobbin used in T1	CHANG CHUN PLASTICS CO LTD	T375J	Phenolic, rated V-0, 150 degC,	QMFZ2	UL (E59481)	
- Insulation Tape used in T1	JINGJIANG YAHUA PRESSURE SENSITIVE GLUE CO LTD	PZ, CT	Rated 130 degC.	OANZ2	UL (E165111)	
- Insulation Tape used in T1 (Alternate)	JINGJIANG JINGYI ADHESIVE PRODUCT CO LTD	JY25-A	Rated 130 degC.	OANZ2	UL (E246950)	
- Varnish used in T1	WU JIANG TAIHU INSULATING MATERIAL CO LTD	T-4260(a)	MW 28. Rated 130 degC.	OBOR2	UL (E228349)	
- Tube	GREAT HOLDING INDUSTRIAL CO LTD	TFL, TFT	VW-1. Rated 150V, 200 degC for TFL; Rated 300V, 200 degC for TFT	YDPU2	UL (E156256)	
- Tube (Alternate)	SHENZHEN WOER HEAT-SHRINKABLE MATERIAL CO LTD	WF	VW-1. Rated 600V, 200 degC	YDPU2	UL (E203950)	
Transformer (T1) (Alternate)	SHAN DONG BOAM ELECTRIC CO LTD	XF00694, XF00695, XF00731,	(OBJY2) Class B. See enclosure 4-05 for details.	--	--	

		XF00794				
- Insulation system used in T1	SHAN DONG BOAM ELECTRIC CO LTD	BOAM-01	Class 130 (B) Insulation System.	OBJY2	UL (E252329)	
- Primary winding used in T1	Various	Various	Polyurethane with or without overcoat Polyamide, 130 degC Min. Type MW-75 or MW-28.	OBMW2	UL	
- Secondary winding used in T1	FURUKAWA ELECTRIC CO LTD	TEX-E	Rated 130 degC Triple insulated wire	OBJT2	UL (E206440)	
- Bobbin used in T1	CHANG CHUN PLASTICS CO LTD	4130	Phenolic, rated V-0, 120degC, min 0.74 mm thick	QMFZ2	UL (E59481)	
- Bobbin used in T1	CHANG CHUN PLASTICS CO LTD	T375J	Phenolic, rated V-0, 150 degC,	QMFZ2	UL (E59481)	
- Insulation Tape used in T1	3M COMPANY ELECTRICAL MARKETS DIV (EMD)	1350FB-1; 1350FB-2; 1350FW-1; 1350FW-2; 1350FY-1; 1350FY-2	Rated 130 degC.	OANZ2	UL (E17385)	
- Insulation Tape used in T1 (Alternate)	JINGJIANG YAHUA PRESSURE SENSITIVE GLUE CO LTD	PZ	Rated 130 degC.	OANZ2	UL (E165111)	
- Varnish used in T1	NOROO PAINT & COATINGS CO LTD	DVB-2085(1); DVB-2085(C)	MW 28. Rated 130 degC.	OBOR2	UL (E93947)	
- Tube	GREAT HOLDING INDUSTRIAL CO LTD	TFL	VW-1. Rated 150V, 200 degC for TFL	YDPU2	UL (E156256)	
Opto-couplers (U1)	EVERLIGHT ELECTRONICS CO LTD	EL817	Rated min. 110degC Provide min 5000Vac isolation test voltage rating.	FPQU2/8	UL/cUL (E214129)	
Opto-couplers (U1) (Alternate)	COSMO ELECTRONICS CORP	K1010, KP1010	Rated min. 115degC Provide min 5000Vac isolation test voltage rating.	FPQU2/8	UL/cUL (E169586)	
Opto-couplers (U1) (Alternate)	LITE-ON TECHNOLOGY CORP	LTV-357T, LTV-357, LTV-817CN, LTV-817	Rated min. 115degC Provide min 3750Vac isolation test voltage rating for LTV-357T and LTV-357, 5300Vac	FPQU2/8	UL/cUL (E113898)	

			isolation test voltage rating for LTV-817CN.			
Opto-couplers (U1) (Alternate)	FAIRCHILD SEMICONDUCTOR CORP	H11A817B, F0D817B	Rated min. 110degC Provide min 5000Vac isolation test voltage rating.	FPQU2/8	UL/cUL (E90700)	
Opto-couplers (U1) (Alternate)	SHARP CORP ELECTRONIC COMPONENTS AND DEVICES GROUP	PC817	Rated min. 100degC Provide min 5000Vac isolation test voltage rating.	FPQU2	UL (E64380)	
Heat Sink - HS1	--	--	Aluminum. Approximate overall dimension 82mm by 43mm by 23.5mm, 2.0mm thick, secured to PWB by soldering.	--	--	
Heat Sink - HS2	--	--	Aluminum. Approximate overall dimension 103mm by 24mm by 14.5mm, 2.0mm thick, secured to PWB by soldering.	--	--	
Insulation tape provided on HS2	3M COMPANY ELECTRICAL MARKETS DIV (EMD)	1350T-1, 44	Rated 130 degC	OANZ2	UL (E17385)	
Insulation tape provided on HS2 (Alternate)	3M COMPANY ELECTRICAL MARKETS DIV (EMD)	1350F, 350-1	Rated 130 degC	OANZ2	UL (E17385)	
Insulation tape provided on HS2 (Alternate)	SYMBIO INC	35660Y	Rated 130 degC	OANZ2	UL (E50292)	
Insulation tape provided on HS2 (Alternate)	YAHUA ADHESIVE TAPE CO LTD	CT	Rated 130 degC	OANZ2	UL (178516)	
Insulation tape provided on HS2 (Alternate)	CHANG SHU LIANG YI TAPE INDUSTRY CO LTD	LY-XX	Rated 130 degC	OANZ2	UL (E246820)	
Tubing (optional alternate used for HS2)	Interchangeable	Interchangeable	Minimum 300V, 125 degree C, marked with VW-1	YDPU2	UL	
DC output cord	Various	Various	Jacketed wire. Min. 24AWG, min. VW-1, 80°C, min. 60V.	AVLV2/ZJCZ2	UL	

Label (Optional)	DONGGUAN XIANGQUAN PRINTING CO LTD	XQ03	Rated min 80 deg C. Suitable for use on the plastic enclosure.	PGDQ2	UL (MH27594)	
Label (Optional) (Alternate)	FAN JA PAPER PRINTING CO LTD	FJ-03-3	Rated min 80 deg C. Suitable for use on the plastic enclosure.	PGDQ2	UL (MH19546)	
Label (Optional) (Alternate)	FAN JA PAPER PRINTING CO LTD	FJ07	Rated min 80 deg C. Suitable for use on the plastic enclosure.	PGDQ2	UL (MH19546)	
Label (Optional) (Alternate)	DONGGUAN XIANGQUAN PRINTING CO LTD	XQ004-B	Rated min 80 deg C. Suitable for use on the plastic enclosure.	PGJ12	UL (MH47303)	
Label (Optional) (Alternate)	E-LIN ADHESIVE LABEL CO LTD	EL-15	Rated min 80 deg C. Suitable for use on the plastic enclosure.	PGDQ2	UL (MH45549)	
Label (Optional) (Alternate)	SHENZHEN CORWIN PRINTING CO LTD	CW-01	Rated min 80 deg C. Suitable for use on the plastic enclosure.	PGDQ2	UL (MH47077)	
Label (Optional) (Alternate)	YUEN CHANG SPECIAL PRINTING (SHENZHEN) CO LTD	JL-08	Rated min 80 deg C. Suitable for use on the plastic enclosure.	PGDQ2	UL (MH29752)	
Label (Optional) (Provided if not using engraving or silkscreen or Laser printing)	Various	Various	Rated min 80 deg C. Suitable for use on the plastic enclosure.	PGDQ2	UL	
PWB	Various	Various	Min. V-1, 130°C	ZPMV2	UL	

Enclosures

<u>Type</u>	<u>Supplement Id</u>	<u>Description</u>
Photographs	3-01	Top View (Desktop Type)
Photographs	3-02	Bottom View (Desktop Type)
Photographs	3-03	Inlet View (Desktop Type: Class II)
Photographs	3-04	PCB View - Trace Side (Desktop Type: Class II)
Photographs	3-05	PCB View - Component Side (Desktop Type: Class II)
Photographs	3-06	PCB View - Component Side without Heatsink (Desktop Type: Class II)
Photographs	3-07	Inlet View (Desktop Type: Class I)
Photographs	3-08	PCB View - Component Side without Heatsink (Desktop Type: Class I)
Diagrams	4-01	Dimension of the enclosure (Desktop type)
Diagrams	4-02	Dimension of HS1
Diagrams	4-03	Dimension of HS2
Diagrams	4-04	Dimension of Mylar Sheet between PWB and enclosure
Diagrams	4-05	T1 Spec
Diagrams	4-06	LF2 Spec
Schematics + PWB	5-01	PWB Layout of Desktop Construction
Manuals	6-01	User Manual
Miscellaneous	7-01	Output List
Miscellaneous	7-04	Label Artwork for Models GTM91099-3009-4.0-T2 and GTM91099-3009-4.0-T3A

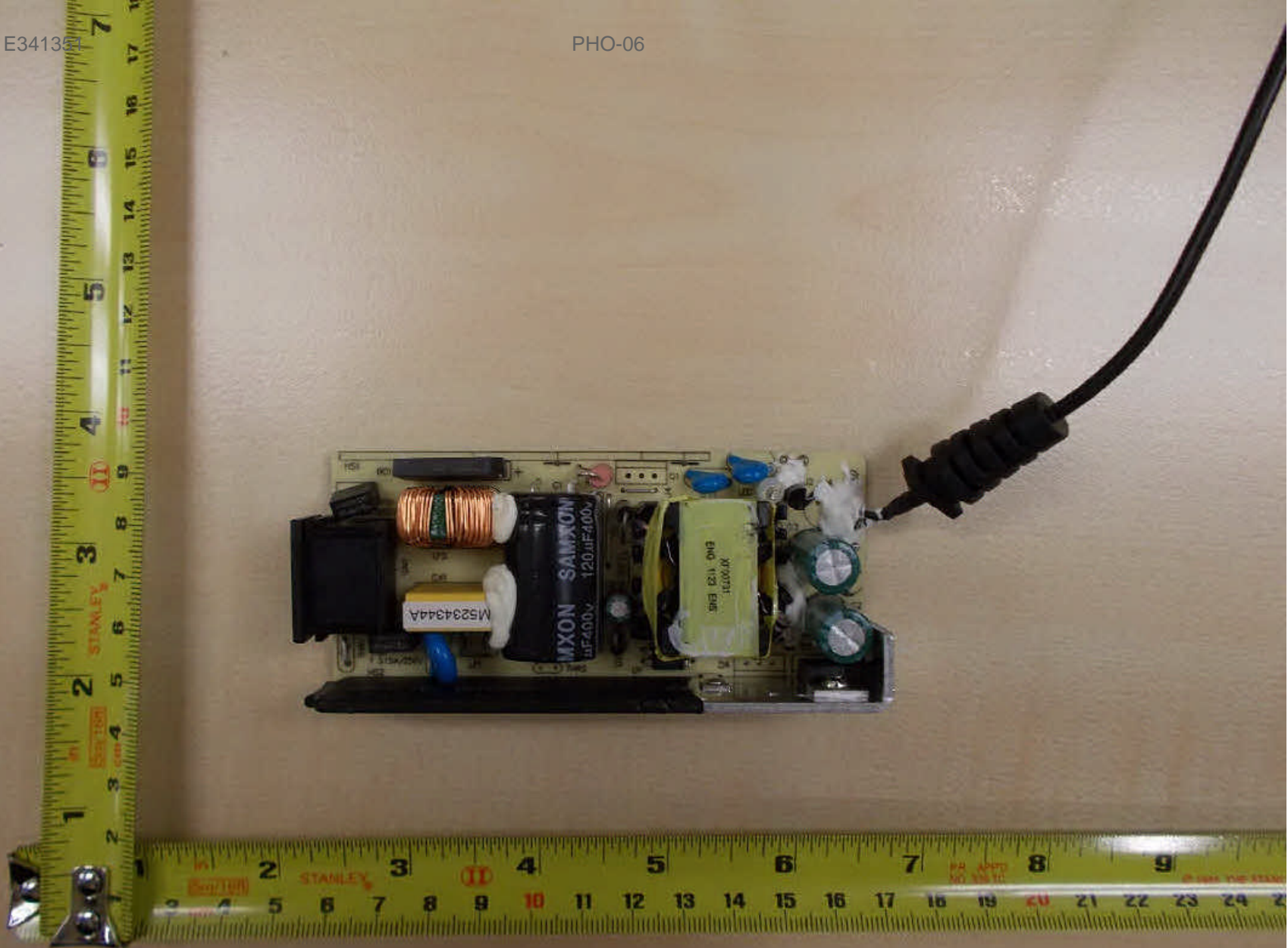








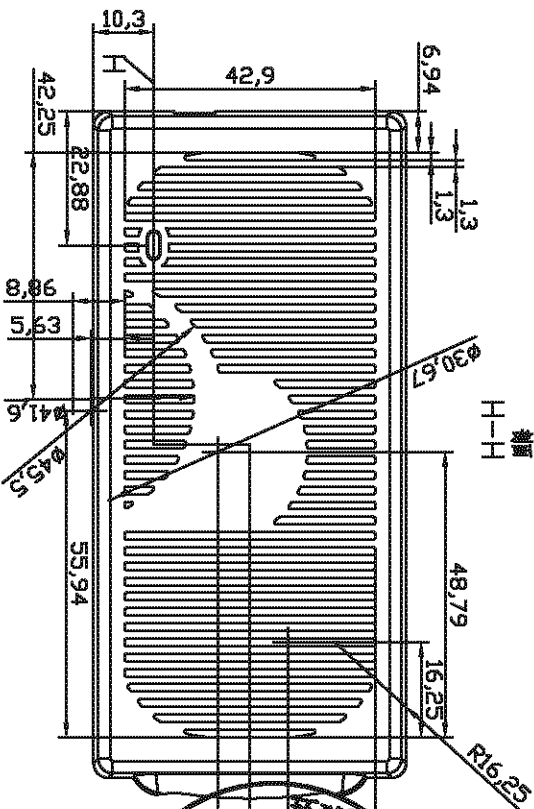
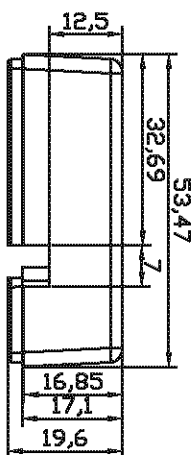
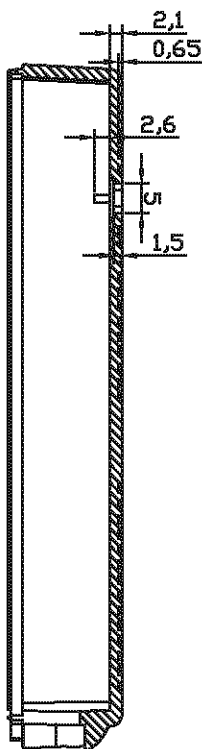
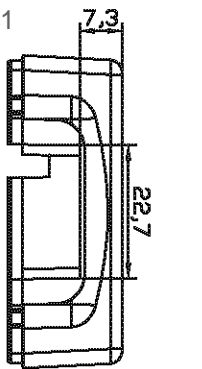
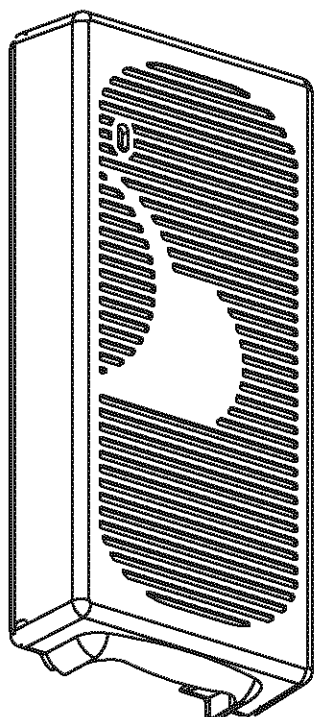
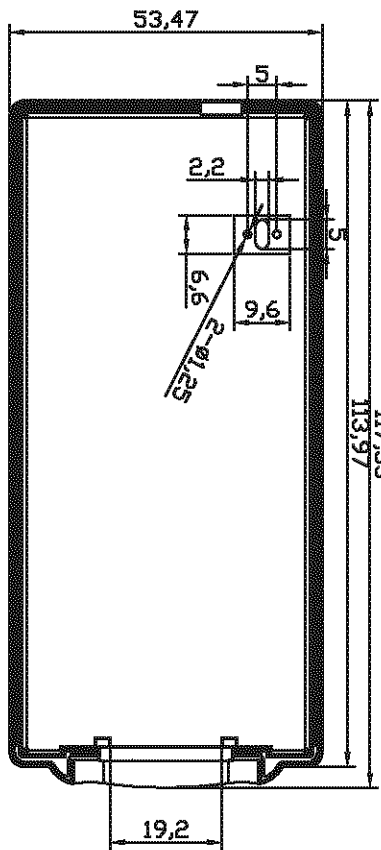




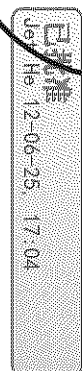


所有数据源自 GLOBTEK 公司, 任何复制和部分的复制都是禁止和非法的, 除非取得 GLOBTEK 公司的授权允许。
PROPERTY OF GLOBTEK, INC. ANY REPRODUCTION, DISCLOSURE OR USE OF THIS DRAWING IN WHOLE OR PART, IS HEREBY PROHIBITED EXCEPT AS SPECIFIED IN WRITING BY GLOBTEK, INC.

REVISION			
REV	DESCRIPTION	DATE	APPROVED
A	Initial Release	2009.10.25	DAVID



Notes:
1. Plastic Material: PC.
2. Color: Black.



Tolerance table			
RANGE	GRADE 1	GRADE 2	GRADE 3
0~4	+/-0.05	+/-0.1	+/-0.2
4~16	+/-0.08	+/-0.15	+/-0.3
16~64	+/-0.12	+/-0.25	+/-0.5
64~250	+/-0.25	+/-0.4	+/-0.8

原注:
Globtek 公司未提供详细制造零件而增加的公差在制造时, 必须参考 UL, CSA 或 IEC 标准规定的公差。

禁用:
Globtek 产品未被授权使用于医疗设备中以及危险环境或医疗设备上, 除非有 GLOBTEK 公司首席执行官的书面正式批准。

文件内容未经授权不得更改
Contents of this document are subject to change without prior notice

INT BY: DATE: 2009.10.25
DRAWN: ALEX DATE: 2009.10.25
APPROVED: DAVID DATE: 2009.10.25

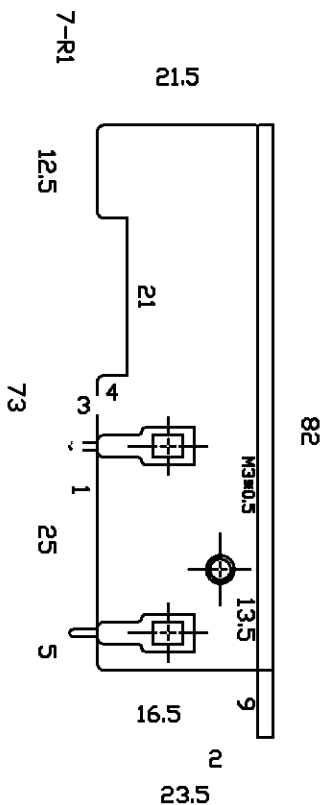
TOLERANCES:
grade 1

Globtek (SUZHOU) Co., Ltd
Tel: +86-512-6279901 Fax: +86-512-6279935 Web: www.globtek.cn
DWG Title: 2012.06.27
Top Side Enclosure for 110V 60W Series


Model No: GTB1099-XYTY
Part No: N/A
Scale: 1:1
Sheet: 2 of 3

APPROVAL FLOW: 1. CUSTOMER (INHOUSE/OUTSIDE) 2. ENG. MANAGER (CHECK/REVIEW) 3. DESIGN. ENGR (DRAW/CHECK) 4. ENG. MANAGER (REVIEW/PROVIDE FILE KEEPING-ENGNG and QA ASSISTANT) 5. OPEN MANAGER 6. RELEASE TO MECH. ENGR 7. END CUSTOMER (INHOUSE/OUTSIDE)

項次	變更記錄	備注
△		
△		
△		



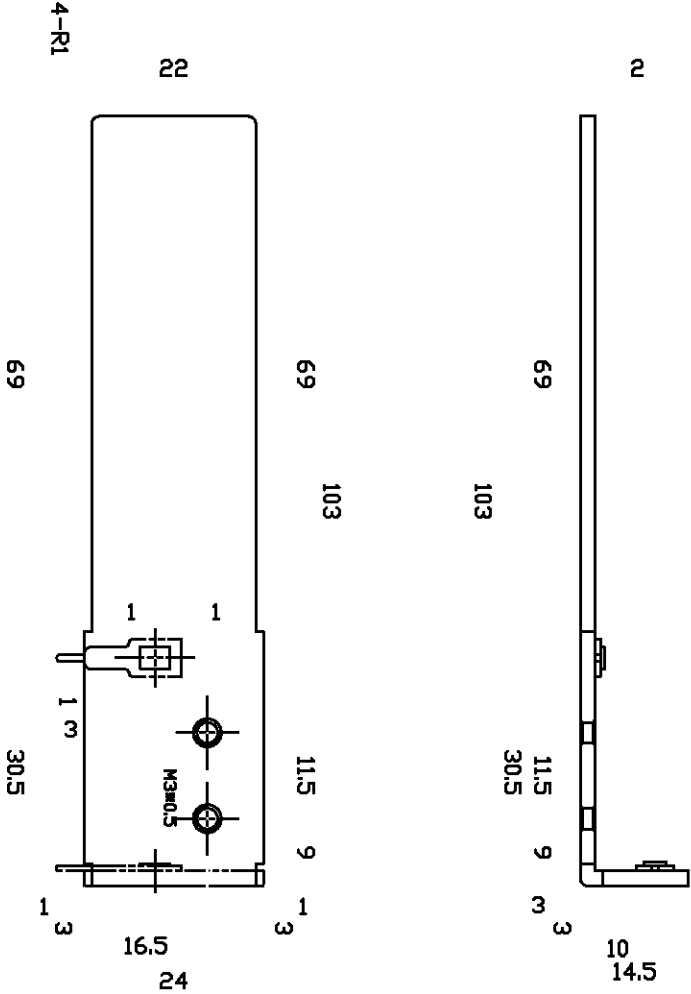
TOLERANCE					
>100	70-100	40-70	10-40	10-Less	其他
+/-0.5	+/-0.3	+/-0.2	+/-0.15	+/-0.1	依照一般公差

DESIGNED	CHECKED	APPROVED		TITLE	DATE
Ruwu_xiao	Great_lju	Xinqiao_chen		HS1	
		UNITS SCALE	mm 1:1	DRAWING No. HO2-611813-001	2010-06-22
		DRAWING NAME		3A-605DXxx	REVISION 1.0

攻牙及通孔須雙面倒角。

Att.

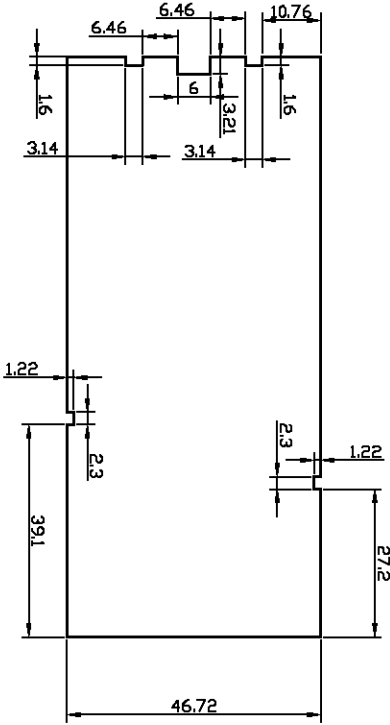
項次	變更記錄	備注
A		
A		
A		



技术要求
1.材料:鋁材2.0mm.
2.表面須平整,光潔,不得有划傷和毛邊.
攻牙及通孔須雙面倒角。

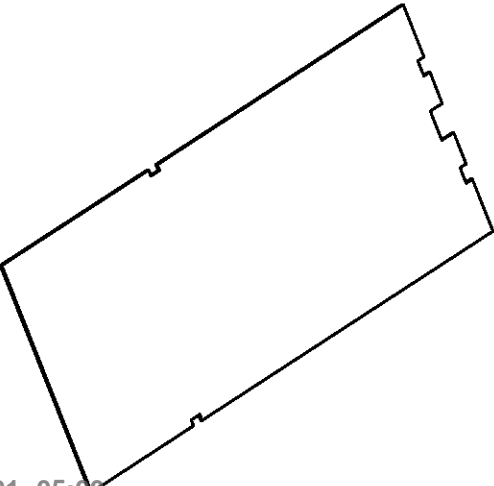
TOLERANCE					
>100	70-100	40-70	10-40	10-Less	其他
±0.5	±0.3	±0.2	±0.15	±0.1	依照一般公差
TITLE					DATE
DRAWING NO.					2010-06-22
HS2					
DRAWING NAME					REVISION
3A-605Dxxx					1.0

所有数据信息: 本文件所有权属于 GLOBTEK 公司, 任何翻体和部分复制都是禁止和非法的, 除非获得 GLOBTEK 公司的授权允许. PROPRIETARY INFORMATION: PROPRIETARY OF GLOBTEK, INC. ANY REPRODUCTION, DISCLOSURE OR USE OF THIS DRAWING IN WHOLE OR PART, IS HEREBY PROHIBITED EXCEPT AS SPECIFIED IN WRITING BY GLOBTEK, INC.			
REVISION 修订本			
REV	DESCRIPTION 描述	DATE	APPROVED
A	RELEASE 熟版	2010.09.16	



NOTE:

- 1.Material: BK-17
(材料: BK-17;).
- 2.The product can not have burr
(产品表面不能有毛边)



Tolerance table			
RANGE	GRADE 1	GRADE 2	GRADE 3
0~4	± 0.05	± 0.1	± 0.2
4~16	± 0.08	± 0.15	± 0.3
16~64	± 0.12	± 0.25	± 0.5
64~250	± 0.25	± 0.4	± 0.8

附注:
Globtek 公司不对未经批准而擅自修改零件而造成的安全性和性能负责, 终端用户必须参考 UL、CSA 或国际规定正确的安装。

Foot Note:
Globtek Inc. will not be liable for the safety and performance of these parts if unauthorized access and repair occurs. End users should consult applicable UL, CSA or EN standards for proper installation instructions

禁用:
Globtek 产品未经授权不得使用于医疗设备中以及危险环境或飞行器上, 除非有 GLOBTEK 公司首席执行官的书面正式批准。

Limitation of Use:
Globtek product are not authorized for use as mission critical components in life support, hazardous environment, nuclear or aircraft applications without prior written approval from the CEO of Globtek Inc.

文件内容未经允许不得更改

Contents of this document are subject to change without prior notice

		PART NO 零件号	REV. 版本	DESCRIPTION 描述	NOTES 备注
420-46430001(R)					
WHERE USED: 用处:					
LOCATION: 区域					
GTSZ		TOLERANCES 公差:			
INIT. BY: XIA 申请者		See table : GRADE 2			
DRAWN: JOHN 制图		Drawing Title: MYLAR FOR 60W			
APPROVED:		MODEL NO 型号: GTM-91089-XXYY			
批准		PART NO 零件号:		Rev. 版本	
DATE: 2010.09.16 日期		SIZE: A4		SHEET 1 OF 1	
DATE: 2010.09.16 日期		SCALE 比例: 1:1			

Created by UL DocumentA

GlobTek(Suzhou), Co., Ltd

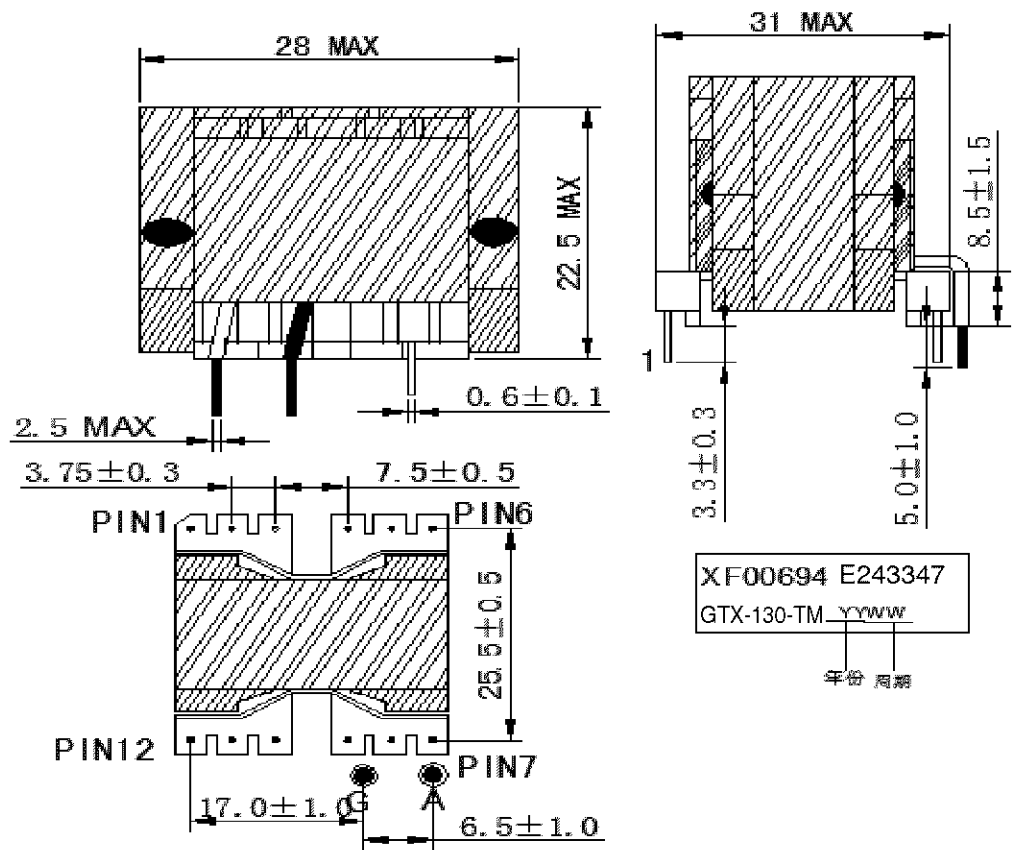
Drawing Title:

MYLAR FOR 60W

Tel: +86-512-6279-0301 Fax: +86-512-6279-0355 Web: www.globtek.cn

[illegible]

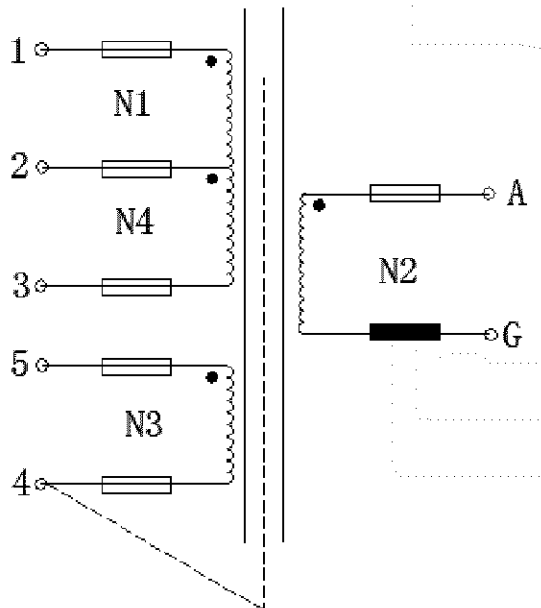
1、 DIMENSION 尺寸 (Unit 单位:mm)



注意/NOTE:

1. PIN6, 8, 9, 10, 12 CUT OFF. PIN2 CUT OFF2/3.
2. 开气隙的一块磁芯装在骨架顶部，平面磁芯用 29mm 的胶带背胶一层；然后磁芯用 12mm 胶带包 3TS 固定。
3. 磁芯结合处需点黑胶固定，共 4 点（如图）
4. 含浸后，成品用 15mm 胶带沿线包方向包 3TS。
5. 标签字尾朝 PIN1-6 喷印或贴于产品顶部。
6. 飞线具体成型尺寸以 PCB 为准。

2. CONNECTION 电路连接图



GlobTek, Inc.	PART NO. / 产品型号	PAGE/页码
	XF 00694	2/5

3. 绕线明细表/Winding: PIN 朝右绕制

序号 No.	BarrierTape 边墙胶带		Terminal 端子		Winding 绕线		Tape 绝缘 胶带	TUBE/套管		备注 Remark
	TOP	PIN	入 In	出 Out	WIRE 线	Ts	Ts	入 In	出 Out	
N1			1	2	$\Phi 0.32 \times 2P$ 2UEW	25	2	20L	20L	1
E1			~4~		T0.025*8W 背胶	1.1	2	26L		3
N2			A	G	$\Phi 0.50 \times 5P$ 三层绝缘线	4	2	14L	14L	1, 2
N3			5	4	$\Phi 0.25 \times 2P$ 2UEW	5	3	23L	23L	4
N4			2	3	$\Phi 0.30 \times 2P$ 2UEW	11	2	22L	22L	1

注解:

1、密绕，首尾线不交叉。

2、A, G 为飞线，A 穿透明套管从 PIN7 侧进线，G 穿黑色套管从 PIN9 侧出线，具体出线要求参照外观图及 PCB。

3、E1 铜箔焊点在中间，用 0.32 的引线接于 PIN4（铜箔不能短路）。

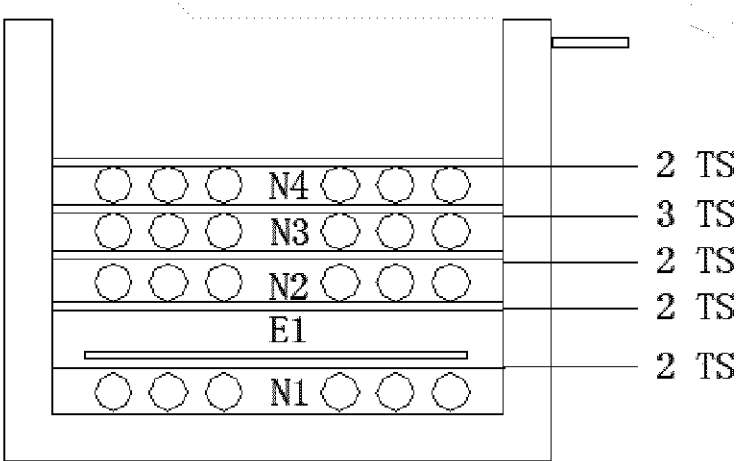
4. 均绕。

GlobTek, Inc.	PART NO. / 产品型号	PAGE/页码
	XF 00694	3/5

4.ELECTRICAL PERFORMANCE 电气参数

No. 序号	ITEM 条款	TERMINAL 端子	SPEC. 要求	REMARK 备注
1	Inductance 电感量	1-3	720uH ±5%	1KHz ,0.25Vrms
2	Leakage Inductance 漏感	1-3(SHORT SEC PIN)	15uH max	
3	DC Resistance 直流电阻(mΩ)	1-3	250mΩ max	20±2℃
4	Withstanding Voltage 耐压	P--S	AC3750V(rms)/3s/2mA	60Hz
		S--C	AC1500V(rms)/3s/2mA	
5	Insulation Resistance 绝缘电阻	Coil-Coil 线圈到线圈	100 MΩ MIN AT DC 500V	NF2511A

5. INTERNAL CONSTRUCTION 内部结构:



GlobTek, Inc.

PART NO. / 产品型号

PAGE/页码

XF 00694

4/5

6. MATERIAL LIST 材料清单:

No. 序号	NAME 名称	MATERIAL 材料	TYPE 规格	MANUFACTURE 生产商	UL FILE No. UL 档案号
1	CORE 磁芯	RM2.3KD	PQ2620	YIBIN JINCHUAN ELECTRONICS CO.,LTD	---
		KP4		MIANYANG KAIYUAN MAGNETISM MATERIAL CO.,LTD	---
2	BOBBIN 骨架	PHENOLIC	T375J	CHANG CHUN PLASTICS CO LTD	E59481
3	WIRE 线	2UEW	φ 0.25 φ 0.30 φ 0.32	CHENG DU SOUTH-WEST ELECTRIC CO.,LTD	E178366
4	INSULATION TAPE	POLYSTER FILM TAPE	PZ	JINGJIANG YAHUA PRESSURE SENSITIVE GLUE CO LTD	E165111
			JY25-A	JINGJIANGJINGYI	E246950
5	FEATURES OF TRIPLE INSULATED WIRE 三层绝缘线	TRW(B)	φ 0.50、	GREATLEOFLOININDUSTRIAL CO LTD	E211989
		TIW-M		Cosmolink	E213764
6	VARNISH 快干漆	EPOXY RESIN	T-4260 (a)	TAIHU INSULATING MATERIAL	E228349
7	TUBE 套管	PTFE	TFL TFT	GREATHOLDING INDUSTRIAL CO LTD	E156256
			WF	SHENZHEN WOER HEAT-SHRINKABLE MATERIAL CO LTD	E203950
8	SHIELDING 屏蔽带	COPPER FOIL 铜带	0.025T*8w 背胶 T2	CHENGDU JINGLU COPPER CO., LTD	---
				WUJIANG KAIQI ECELECTRONIC CO., LTD	
9	SOLDER 焊料	---	99.3Sn/0.7 Cu	YUN NAN TIN CO.,LTD	---

GlobTek, Inc.

PART NO. / 产品型号

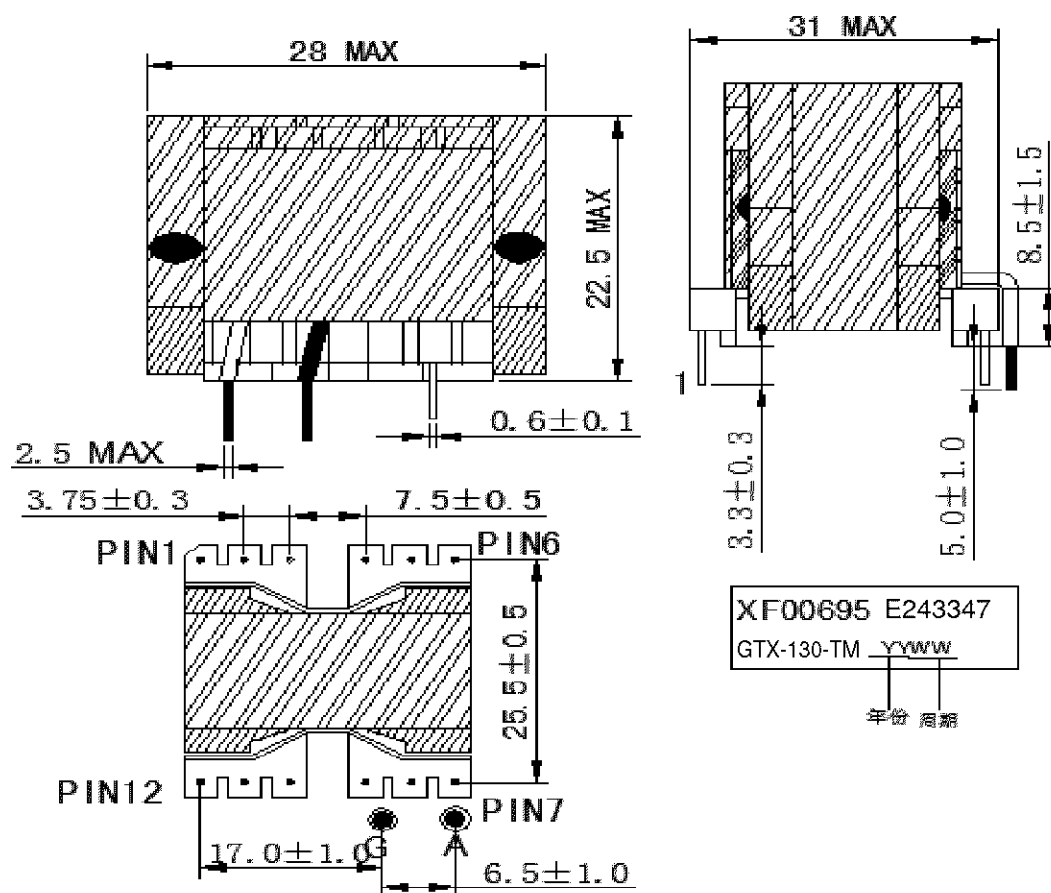
XF 00694

PAGE/页码

5/5

[illegible]

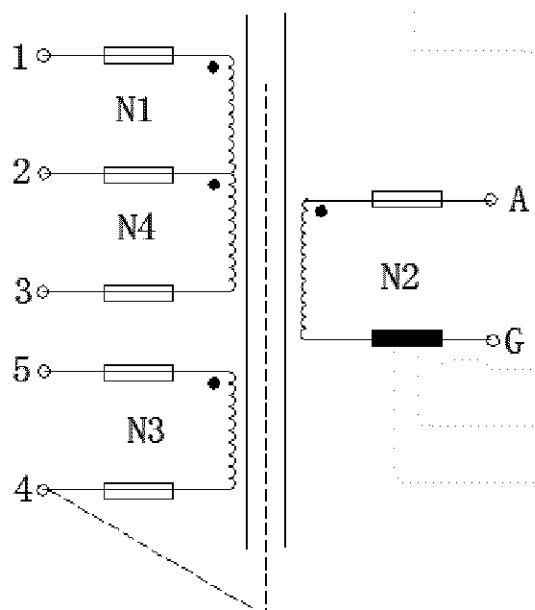
1、DIMENSION 尺寸 (Unit 单位:mm)



注意/NOTE:

1. PIN6, 8, 9, 10, 12 CUT OFF, PIN2 CUT OFF2/3.
2. 开气隙的一块磁芯装在骨架顶部，平面磁芯用 29mm 的胶带背胶一层；然后磁芯用 12mm 胶带包 3TS 固定。
3. 磁芯结合处需点黑胶固定，共 4 点（如图）
4. 含浸后，成品用 15mm 胶带沿线包方向包 3TS。
5. 标签字尾朝 PIN1-6 喷印或贴于产品顶部。
6. 飞线具体成型尺寸以 PCB 为准。

2. CONNECTION 电路连接图



GlobTek, Inc.	PART NO. / 产品型号	PAGE/页码
	XF 00695	2/5

3. 绕线明细表/Winding: PIN 朝右绕制

序号 No.	BarrierTape 边墙胶带		Terminal 端子		Winding 绕线		Tape 绝缘 胶带	TUBE/套管		备注 Remark
	TOP	PIN	入 In	出 Out	WIRE 线	Ts	Ts	入 In	出 Out	
N1			1	2	$\Phi 0.32 \times 2P$ 2UEW	25	2	20L	20L	1
E1			~4~		T0.025*8W 背胶	1.1	2	26L		3
N2			A	G	$\Phi 0.55 \times 3P$ 三层绝缘线	6	2	14L	14L	1, 2
N3			5	4	$\Phi 0.25 \times 2P$ 2UEW	5	3	23L	23L	4
N4			2	3	$\Phi 0.30 \times 2P$ 2UEW	11	2	22L	22L	1

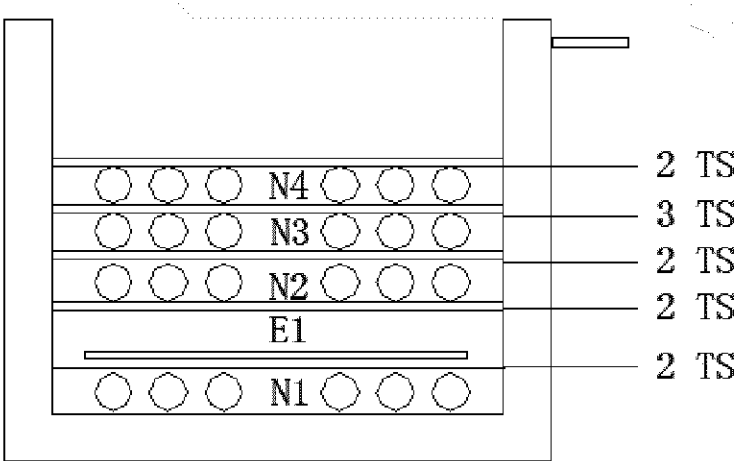
注解:。
1、密绕,首尾线不交叉。
2、A, G 为飞线, A 穿透明套管从 PIN7 侧进线, G 穿黑色套管从 PIN9 侧出线, 具体出线要求参照外观图及 PCB。
3、E1 铜箔焊点在中间, 用 0.32 的引线接于 PIN4 (铜箔不能短路)。
4. 均绕。

GlobTek, Inc.	PART NO. / 产品型号	PAGE/页码
	XF 00695	3/5

4.ELECTRICAL PERFORMANCE 电气参数

No. 序号	ITEM 条款	TERMINAL 端子	SPEC. 要求	REMARK 备注
1	Inductance 电感量	1-3	720uH ±5%	1KHz ,0.25Vrms
2	Leakage Inductance 漏感	1-3(SHORT SEC PIN)	15uH max	
3	DC Resistance 直流电阻(mΩ)	1-3	250mΩ max	20±2℃
4	Withstanding Voltage 耐压	P--S	AC3750V(rms)/3s/2mA	60Hz
		S--C	AC1500V(rms)/3s/2mA	
5	Insulation Resistance 绝缘电阻	Coil-Coil 线圈到线圈	100 MΩ MIN AT DC 500V	NF2511A

5. INTERNAL CONSTRUCTION 内部结构:



GlobTek, Inc.

PART NO. / 产品型号

PAGE/页码

XF 00695

4/5

6. MATERIAL LIST 材料清单:

No. 序号	NAME 名称	MATERIAL 材料	TYPE 规格	MANUFACTURE 生产商	UL FILE No. UL 档案号
1	CORE 磁芯	RM2.3KD	PQ2620	YIBIN JINCHUAN ELECTRONICS CO.,LTD	---
		KP4		MIANYANG KAIYUAN MAGNETISM MATERIAL CO.,LTD	---
2	BOBBIN 骨架	PHENOLIC	T375J	CHANG CHUN PLASTICS CO LTD	E59481
3	WIRE 线	2UEW	φ 0.25 φ 0.30 φ 0.32	CHENG DU SOUTH-WEST ELECTRIC CO.,LTD	E178366
4	INSULATION TAPE 绝缘胶带	POLYSTER FILM TAPE	PZ	JINGJIANG YAHUA PRESSURE SENSITIVE GLUE CO LTD	E165111
			JY25-A	JINGJIANGJINGYI	E246950
5	FEATURES OF TRIPLE INSULATED WIRE 三层绝缘线	TRW(B)	φ 0.55、	GREATLEOFLOINDUSTRIAL CO LTD	E211989
		TIW-M		Cosmolink	E213764
6	VARNISH 快干漆	EPOXY RESIN	T-4260(a)	TAIHU INSULATING MATERIAL	E228349
7	TUBE 套管	PTFE	TFL TFT	GREATHOLDING INDUSTRIAL CO LTD	E156256
			WF	SHENZHEN WOER HEAT-SHRINKABLE MATERIAL CO LTD	E203950
8	SHIELDING 屏蔽带	COPPER FOIL 铜带	0.025T*8w 背胶 T2	CHENGDU JINGLU COPPER CO., LTD	---
				WUJIANG KAIQI ECELECTRONIC CO., LTD	
9	SOLDER 焊料	---	99.3Sn/0.7 Cu	YUN NAN TIN CO.,LTD	---

GlobTek, Inc.

PART NO. / 产品型号

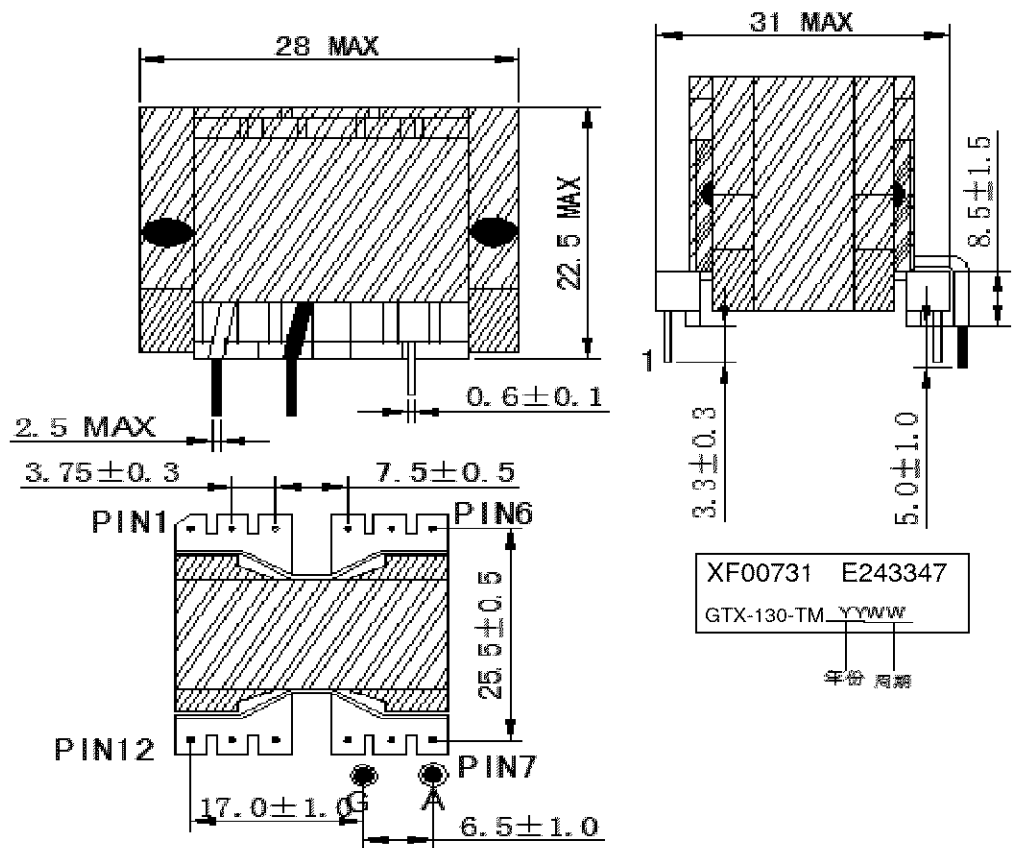
XF 00695

PAGE/页码

5/5

Created by UL Document Assembler 2016-08-08 08:22:21 -05:00

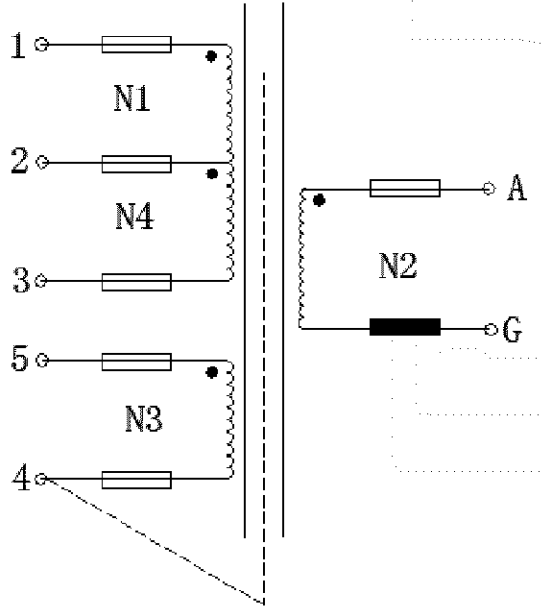
1、 DIMENSION 尺寸 (Unit 单位:mm)



注意/NOTE:

1. PIN6, 8, 9, 10, 12 CUT OFF. PIN2 CUT OFF 2/3.
2. 开气隙的一块磁芯装在骨架顶部, 平面磁芯用 29mm 的胶带背胶一层; 然后磁芯用 12mm 胶带包 2TS 固定。
3. 磁芯结合处需点黑胶固定, 共 4 点 (如图)
4. 含浸后, 成品用 15mm 胶带沿线包方向包 3TS。
5. 标签字尾朝 PIN1-6 喷印或贴于产品顶部。
6. 飞线具体成型尺寸以 PCB 为准。

2. CONNECTION 电路连接图



GlobTek, Inc.	PART NO. / 产品型号	PAGE/页码
	XF 00731	2/5

3. 绕线明细表/Winding: PIN 朝右绕制

序号 No.	BarrierTape 边墙胶带		Terminal 端子		Winding 绕线		Tape 绝缘 胶带	TUBE/套管		备注 Remark
	TOP	PIN	入 In	出 Out	WIRE 线	Ts	Ts	入 In	出 Out	
N1			1	2	$\Phi 0.32 \times 2P$ 2UEW	25	2	20L	20L	1
E1			~4~		T0.025*8W 背胶	1.1	2	26L		3
N2			A	G	$\Phi 0.45 \times 2P$ 三层绝缘线	13	2	17L	17L	1, 2
N3			5	4	$\Phi 0.25 \times 2P$ 2UEW	5	3	23L	23L	4
N4			2	3	$\Phi 0.30 \times 2P$ 2UEW	11	2	22L	22L	1

注解:

1、密绕，首尾线不交叉。

2、A, G 为飞线，A 穿透明套管从 PIN7 侧进线，G 穿黑色套管从 PIN9 侧出线，具体出线要求参照外观图及 PCB。

3、E1 铜箔焊点在中间，用 0.35 的引线接于 PIN4（铜箔不能短路）。

4. 均绕。

GlobTek, Inc.

PART NO. / 产品型号

PAGE/页码

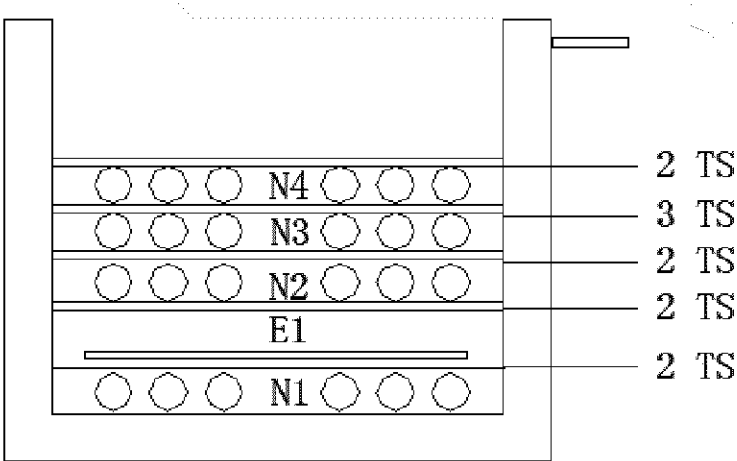
XF 00731

3/5

4.ELECTRICAL PERFORMANCE 电气参数

No. 序号	ITEM 条款	TERMINAL 端子	SPEC. 要求	REMARK 备注
1	Inductance 电感量	1-3	720uH ±5%	1KHz ,0.25Vrms
2	Leakage Inductance 漏感	1-3(SHORT SEC PIN)	15uH max	
3	DC Resistance 直流电阻(mΩ)	1-3	250mΩ max	20±2℃
4	Withstanding Voltage 耐压	P--S	AC3750V(rms)/3s/2mA	60Hz
		S--C	AC1500V(rms)/3s/2mA	
5	Insulation Resistance 绝缘电阻	Coil-Coil 线圈到线圈	100 MΩ MIN AT DC 500V	NF2511A

5. INTERNAL CONSTRUCTION 内部结构:



GlobTek, Inc.

PART NO. / 产品型号

PAGE/页码

XF 00731

4/5

6. MATERIAL LIST 材料清单:

No. 序号	NAME 名称	MATERIAL 材料	TYPE 规格	MANUFACTURE 生产商	UL FILE No. UL 档案号
1	CORE 磁芯	RM2.3KD	PQ2620	YIBIN JINCHUAN ELECTRONICS CO.,LTD	---
		KP4		MIANYANG KAIYUAN MAGNETISM MATERIAL CO.,LTD	---
2	BOBBIN 骨架	PHENOLIC	T375J	CHANG CHUN PLASTICS CO LTD	E59481
3	WIRE 线	2UEW	ϕ 0.25 ϕ 0.30 ϕ 0.32	CHENG DU SOUTH-WEST ELECTRIC CO.,LTD	E178366
4	INSULATION TAPE	POLYSTER FILM TAPE	PZ	JINGJIANG YAHUA PRESSURE SENSITIVE GLUE CO LTD	E165111
			JY25-A	JINGJIANGJINGYI	E246950
5	FEATURES OF TRIPLE INSULATED WIRE 三层绝缘线	TRW(B)	ϕ 0.45、	GREATLEOFLOININDUSTRIAL CO LTD	E211989
		TIW-M		Cosmolink	E213764
6	VARNISH 快干漆	EPOXY RESIN	T-4260 (a)	TAIHU INSULATING MATERIAL	E228349
7	TUBE 套管	PTFE	TFL TFT	GREATHOLDING INDUSTRIAL CO LTD	E156256
			WF	SHENZHEN WOER HEAT-SHRINKABLE MATERIAL CO LTD	E203950
8	SHIELDING 屏蔽带	COPPER FOIL 铜带	0.025T*8w 背胶 T2	CHENGDU JINGLU COPPER CO., LTD	---
				WUJIANG KAIQI ECELECTRONIC CO., LTD	
9	SOLDER 焊料	---	99.3Sn/0.7 Cu	YUN NAN TIN CO.,LTD	---

GlobTek, Inc.

PART NO. / 产品型号

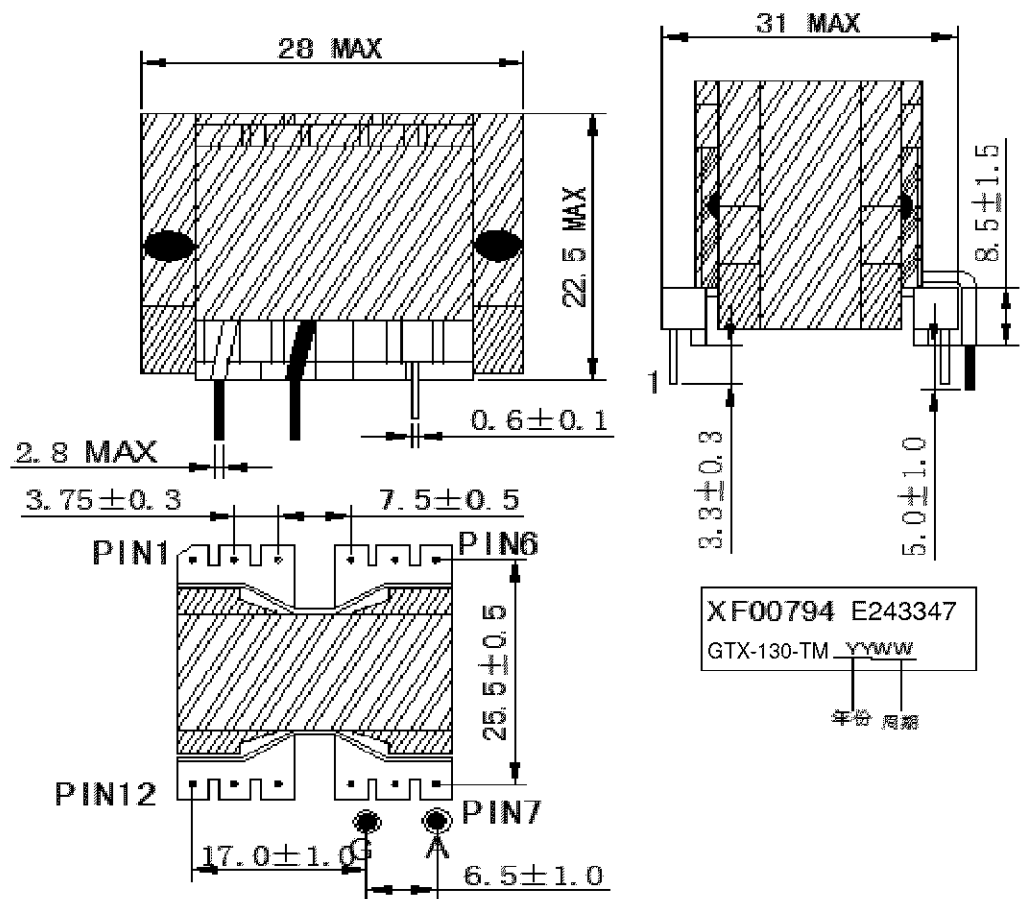
XF 00731

PAGE/页码

5/5

[illegible]

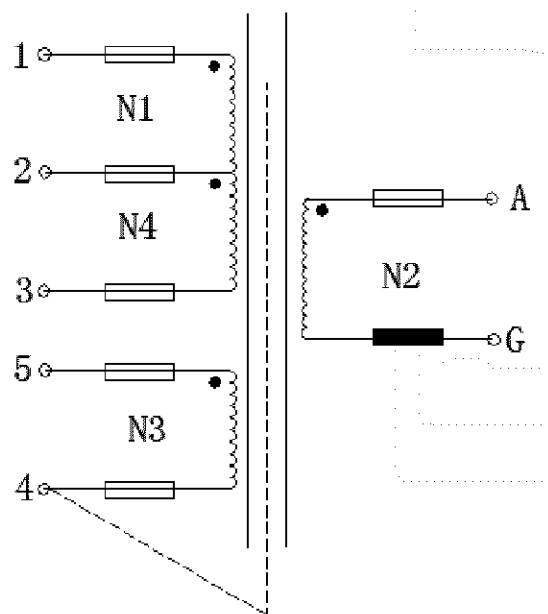
1、 DIMENSION 尺寸 (Unit 单位:mm)



注意/NOTE:

1. PIN6, 8, 9, 10, 12 CUT OFF. PIN2 CUT OFF 2/3.
2. 开气隙的一块磁芯装在骨架顶部，平面磁芯用 29mm 的胶带背胶一层；然后磁芯用 12mm 胶带包 3TS 固定。
3. 磁芯结合处需点黑胶固定，共 4 点（如图）
4. 含浸后，成品用 15mm 胶带沿线包方向包 3TS。
5. 标签字尾朝 PIN1-6 喷印或贴于产品顶部。
6. 飞线具体成型尺寸以 PCB 为准。

2. CONNECTION 电路连接图



GlobTek, Inc

PART NO. / 产品型号

XF 00794

PAGE/页码

2/5

3. 绕线明细表/Winding: PIN 朝右绕制

序号 No.	BarrierTape 边墙胶带		Terminal 端子		Winding 绕线		Tape 绝缘 胶带	TUBE/套管		备注 Remark
	TOP	PIN	入 In	出 Out	WIRE 线	Ts	Ts	入 In	出 Out	
N1			A	G	$\Phi 0.50 \times 3P$ 三层绝缘线	3	2	14L	14L	2
E1			3~~		T0.025*8W 背胶	1.1	2	26L		3
N2			1	2	$\Phi 0.22 \times 2P$ 2UEW	30	2	24L	24L	1
E2			3~~		T0.025*8W 背胶	1.1	2	26L		3
N3			A	G	$\Phi 0.50 \times 3P$ 三层绝缘线	3	2	14L	14L	2
N4			5	4	$\Phi 0.22 \times 2P$ 2UEW	8	2	24L	24L	4
N5			2	3	$\Phi 0.22 \times 2P$ 2UEW	15	2	24L	24L	1

注解:。

1、密绕。

2、A, G 为飞线, A 穿透明套管, G 穿黑色套管, 均从 PIN9-10 中间槽出线, 具体飞线成型要求参照外观图及 PCB。

3、E1 铜箔焊点在中间, 用 0.22 的引线接于 PIN4 (铜箔不能短路)。

4. 均绕。

GlobTek, Inc

PART NO. / 产品型号

PAGE/页码

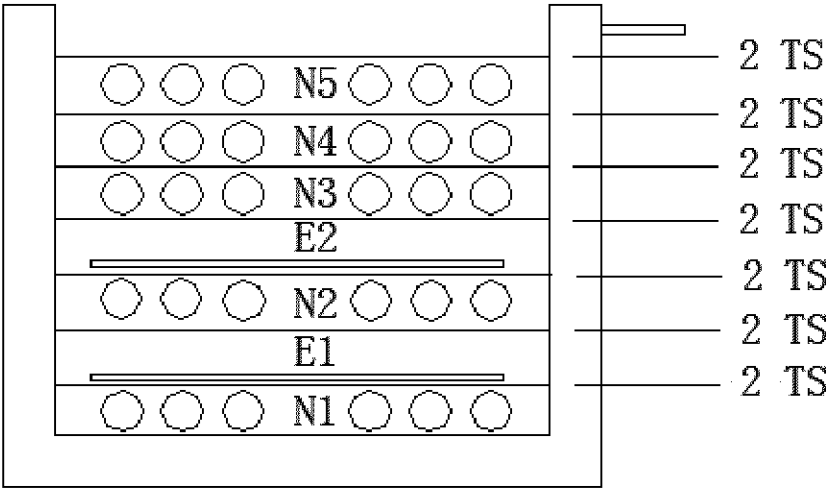
XF 00794

3/5

4.ELECTRICAL PERFORMANCE 电气参数

No. 序号	ITEM 条款	TERMINAL 端子	SPEC. 要求	REMARK 备注
1	Inductance 电感量	1-3	1.5mH ±5%	1KHz ,0.25Vrms
2	Leakage Inductance 漏感	1-3(SHORT SEC PIN)	30uH max	
3	DC Resistance 直流电阻(mΩ)	1-3	0.8 Ω max	20±2℃
4	Withstanding Voltage 耐压	P--S	AC3750V(rms)/3s/2mA	60Hz
		S--C	AC1500V(rms)/3s/2mA	
5	Insulation Resistance 绝缘电阻	Coil-Coil 线圈到线圈	100 MΩ MIN AT DC 500V	NF2511A

5. INTERNAL CONSTRUCTION 内部结构:



GlobTek, Inc

PART NO. / 产品型号

PAGE/页码

XF 00794

4/5

6. MATERIAL LIST 材料清单:

No. 序号	NAME 名称	MATERIAL 材料	TYPE 规格	MANUFACTURE 生产商	UL FILE No. UL 档案号
1	CORE 磁芯	RM2.3KD	PQ2620	YIBIN JINCHUAN ELECTRONICS CO.,LTD	---
		KP4		MIANYANG KAIYUAN MAGNETISM MATERIAL CO.,LTD	---
2	BOBBIN 骨架	PHENOLIC	T375J	CHANG CHUN PLASTICS CO LTD	E59481
3	WIRE 线	2UEW	φ 0.22	CHENG DU SOUTH-WEST ELECTRIC CO.,LTD	E178366
4	INSULATION TAPE 绝缘胶带	POLYSTER FILM TAPE	PZ	JINGJIANG YAHUA PRESSURE SENSITIVE GLUE CO LTD	E165111
			JY25-A	JINGJIANGJINGYI	E246950
5	FEATURES OF TRIPLE INSULATED WIRE 三层绝缘线	TRW(B)	φ 0.50、	GREATLEOFLOINDUSTRIAL CO LTD	E211989
		TIW-M		Cosmolink	E213764
6	VARNISH 快干漆	EPOXY RESIN	T-4260 (a)	TAIHU INSULATING MATERIAL	E228349
7	TUBE 套管	PTFE	TFL TFT	GREATHOLDING INDUSTRIAL CO LTD	E156256
			WF	SHENZHEN WOER HEAT-SHRINKABLE MATERIAL CO LTD	E203950
8	SHIELDING 屏蔽带	COPPER FOIL 铜带	0.025T*8w 背胶 T2	CHENGDU JINGLU COPPER CO., LTD	---
				WUJIANG KAIQI ECELECTRONIC CO., LTD	
9	SOLDER 焊料	---	99.3Sn/0.7 Cu	YUN NAN TIN CO.,LTD	---

GlobTek, Inc

PART NO. / 产品型号

XF 00794

PAGE/页码

5/5

CUSTOMER	GlobTek	CUSTOMER P/N	NF00031
1. MECHANICAL DIMENSION: (UNIT: mm)			
<div><div></div><div></div></div>			
2、 SCHEMATIC:			
<div></div>			<div>NOTE: 1. 线圈需绕成“十”字型（如图）； 2. 各整脚距离以实插PCB板为准。</div>
3、 ELECTRICAL CHARACTERISTIC:			
3.1 INDUCTANCE:(TH2811, 10KHZ, 0.05V 25℃)			
L1 (1~4)=L2 (2~3): 10mH MIN			
BALANCE INDUCTANCE			
L1-L2 ≤0.5mH			
3.2 DCR:(AT 25℃,60±5 % RH)			
R1(1~4)=R2(2~3): 130.0mΩ MAX			
		ZHIJIE P/N	1008076
		DATE	9/17/2010
		PAGE No	Page 1of 2

CUSTOMER		GlobTek		CUSTOMER P/N		NF00083	
4. MATERIAL LIST:							
No.	ITEM	MATERIAL	SUPPLIER			UL No.	
1	CORE	R10K	VAKOS				
2	WIRE	POLYURETHANE ENAMELLED WIRE MW75C（UEW）（2UEW）	TA YA ELECTRIC WIRE & CABLE Co., LTD			E84201	
3	PCB	FR-4 1.0mm	KINGBOARD LAMINATES Co., LTD			E123995	
4	EPOXY	8558-2 BLACK	JUHEXING CHEMICAL GUANG ZHOU CO.LTD			E204979	
5	VARNISH	E57	SHENZHEN CHANGXIAN TECHNOLOGY CO., LTD				
				ZHIJIE P/N		1003041	
				DATE		8/7/2010	
				PAGE No		Page 2of 2	

PROPRIETARY INFORMATION: PROPRIETARY OF GLOBTEK, INC. ANY REPRODUCTION, DISCLOSURE OR USE OF THIS DRAWING IN WHOLE OR IN PART, IS HEREBY PROHIBITED EXCEPT AS SPECIFIED IN WRITING BY GLOBTEK, INC.	REVISION			
	REV	DESCRIPTION	DATE	APPROVED
	A	INITIAL RELEASE, RFS. 18011, MS	01/28/10	HM
	B	CHANGE OF CABLE FROM 18AWG/1830mm TO 16AWG/1200 mm, & PACKING, ADD CQC TO LABEL, RFS.22423, MS	02/16/12	HM
	C	REMOVE FERRITE, RFS. 22563, MS	03/12/12	HM



All models under this series are Certified to be in compliance with all the applicable requirements of UL60601-1 2nd Edition, CSA 22.2 No.601.1-M90 and EN 60601-1:A2. Globtek's Medical power supplies are designed to be used in applications that do not connect the output to Patient Circuits directly. The power supply can be used in systems with patient applied parts only when appropriate system level isolation is provided by the end user.

1. NOTES:

DIMENSIONS ARE IN MM UNLESS SPECIFIED OTHERWISE.

2. ELECTRICAL SPECIFICATIONS:

INPUT VOLTAGE:

90-264 VAC

INPUT CURRENT:

<1.5 A RMS MAX

INPUT FREQUENCY:

47 - 63 HZ

OUTPUT VOLTAGE :

12 VDC, NO LOAD TO FULL LOAD, NO MINIMUM LOAD REQUIRED

OUTPUT CURRENT :

5.0 A

OUTPUT POWER (RATED):

60 WATTS MAX

OUTPUT RIPPLE VOLTAGE (PEAK TO PEAK):

+/-1% OR 150 mV WHICHEVER IS GREATER AT NOMINAL OUTPUT VOLTAGE.
MEASURED AT 20 MHz BANDWIDTH WITH 0.1µF CERAMIC CAPACITOR IN
PARALLEL WITH 10 µF ELECTROLYTIC CAPACITOR CONNECTED AT THE END
OF THE OUTPUT CONNECTOR.

OUTPUT REGULATION:

± 5 % OF NOMINAL OUTPUT VOLTAGE,
MEASURED AT O/P CONNECTOR AT NOMINAL LINE

LINE REGULATION:

± 2 % MAX AT FULL LOAD

TURN ON/ TURN OFF OVERSHOOT:

5% MAX 500µS MAX RECOVERY TIME FOR 25% TO 50% STEP LOAD

TURN-ON DELAY:

2 SEC MAX AT FULL LOAD

HOLD-UP TIME:

8 mSEC MIN AT NOMINAL INPUT AND FULL LOAD

INRUSH CURRENT:

40 A MAX AT COLD START 120 VAC, 60A MAX COLD START 230VAC

SWITCHING FREQUENCY:

100 KHz TYPICAL

OVER-VOLTAGE PROTECTION:

PROTECTED, HICCUP WITH AUTO RECOVERY

OVER-LOAD:

PROTECTED, HICCUP WITH AUTO RECOVERY

SHORT CIRCUIT:

PROTECTED, HICCUP WITH AUTO RECOVERY

EFFICIENCY:

87% < AVERAGE EFFICIENCY IN ACTIVE MODE, 0.3W ≥ NO-LOAD

INTERNATIONAL EFFICIENCY COMPLIANCE:

EFFICIENCY LEVEL V REGISTERED WITH EPA ENERGY STAR® PROGRAM VERSION 2.0,
COMPLIES WITH U.S. ENERGY INDEPENDENCE AND SECURITY ACT OF 2007 (EISA),
CALIFORNIA ENERGY COMMISSION (CEC), EU ECO-DESIGN DIRECTIVE 2005/32/EC
(EC REGULATION 278/2009), AUSTRALIA / NEW-ZEALAND MEPS (AS/NZS4665),
CHINA ENERGY COUNCIL (CECP), EUROPEAN CODE OF CONDUCT FOR POWER
SUPPLY EFFICIENCY

OUTPUT INDICATOR:

BLUE LED FOR OUTPUT PRESENT

OTHER PROTECTION:

INPUT LINE AND NEUTRAL FUSING

SAFETY MEDICAL APPROVALS (PENDING) :

UL60601-1, CUL TO 22.2 # 601, SIQ TO EN60601-1, CE, CB REPORT
AS/NZ TO 60950-1, C-TICK TO 55022, EK TO K60950-1

SAFETY ITE APPROVALS (PENDING) :

UL60950-1, CUL TO 22.2 # 950, SIQ TO EN60950-1, CE, CB REPORT
AS/NZ TO 60950-1, C-TICK TO 55022, EK TO K60950-1

DIELECTRIC WITHSTAND VOLTAGE:

5656 VDC PRIMARY-SECONDARY (FOR MEDICAL)

LEAKAGE CURRENT:

≤ 0.3 mA AT 240 VAC

EMI:

COMPLIES WITH EN55011 AND EN55022 CLASS B, VCCI AND FCC PART 15 CLASS B
WHEN TESTED WITH A RESISTIVE LOAD, BOTH CONDUCTED AND RADIATED EMI

CE MARK:

TESTED TO COMPLY WITH EN 60601-1-2:2001, EN61000-3-2,
EN61000-3-3, INCLUDING EN61000-4-2, EN61000-4-3,
EN61000-4-4, EN61000-4-5, EN61000-4-6, EN61000-4-8, EN61000-4-11

MTBF:

200,000 HOURS AT 25°C AMBIENT TEMPERATURE

OPERATING TEMPERATURE:

0°C TO 40°C

STORAGE TEMPERATURE:

-40°C TO 80°C

HUMIDITY:

0% TO 90% RELATIVE HUMIDITY


ROHS:

COMPLIES WITH EU 2002/95/EC AND CHINA SJ/T 11363-2006



PRELIMINARY



Foot Note: Globtek Inc. will not be liable for the safety and performance of these power supplies if unauthorized access and repair occurs. End user should consult for the proper installation instruction the applicable UL, CSA and EN standards. Limitation of Use: Globtek product are not authorized for use as mission critical components in life support, hazardous environment, nuclear or aircraft applications without prior written approval from the CEO of Globtek Inc. Contents of this document are subject to change without prior notice	DASH NO.	PART NO	REV.	DESCRIPTION	NOTES
	TABULATION BLOCK				
	INIT.BY: MS		DATE: 01/28/10	TOLERANCES: DECIMALS .XX → 0.1 .XXX → .005 MILLIMETERS .XX → 0.3 .XXX → .013	 186 Veterans Dr. Northvale, NJ 07647 Tel. 201-784-1000 Fax 201.784.0111 www.globtek.com
	DRAWN: NF	DATE: 01/28/10	FSCN No.: G. N	SIZE: A	DWG TITLE: WALL PLUG-IN SWITCHING POWER SUPPLY. 60WATTS. 12V@.5A N.A.. EURO. UK. SAA UNIVERSAL INPUT. MEDICAL. CLASS I MODEL NO: GTM91099-6012-T3A REV. C
APRVD : HM		DATE: 01/28/10	SCALE: NONE	PART NO: RR9LE5000CCP-C-IM(RV)	SHEET 1 OF 4

PROPRIETARY INFORMATION:

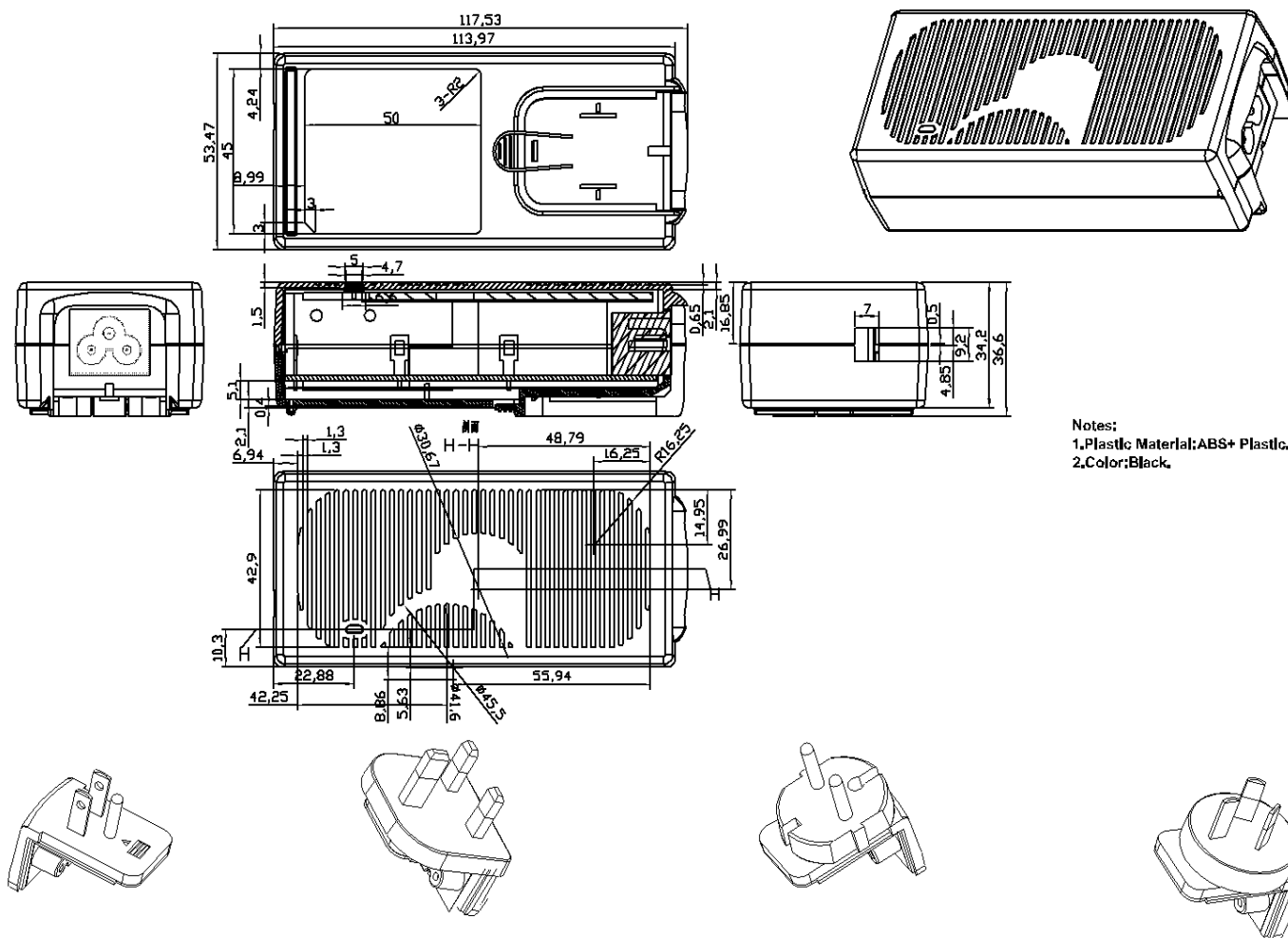
PROPRIETARY OF GLOBTEK, INC. ANY REPRODUCTION, DISCLOSURE OR USE OF THIS DRAWING IN WHOLE OR IN PART, IS HEREBY PROHIBITED EXCEPT AS SPECIFIED IN WRITING BY GLOBTEK, INC.

3. ENCLOSURE:

UPPER HOUSING: HIGH IMPACT PLASTIC, 94V0 POLYCARBONATE, NON-VENTED, COLOR BLACK

LOWER HOUSING: HIGH IMPACT PLASTIC 94V0 POLYCARBONATE, NON-VENTED, COLOR BLACK

SIZE: 117.53 x 53.47 x 36.6 ± 1 mm



Notes:
1. Plastic Material: ABS+ Plastic.
2. Color: Black.

P/N: R-NA-3(R)
NORTH AMERICA
CHINA
JAPAN

P/N: R-UK-3(R)
UNITED KINGDOM
HONG KONG
SINGAPORE

P/N: R-EU-3(R)
EUROPE
SOUTH AMERICA

P/N: R-SAA-3(R)
AUSTRALIA

INPUT CONNECTORS OPTIONS		Input connector
Pins or Kits must be ordered separately		R-Kit-3(R)
1	CLASS I MODEL NEMA 5-15P AC POWER PLUG WITH 2 PRONGS, R-NA-3(R)	X
2	AUSTRALIAN CONFIGURATION: SAA 2 PINS PLUS GROUND CLASS I, R-SAA-3(R)	X
3	UK CONFIGURATION: UK 2 PINS PLUS GROUND CLASS I, R-UK-3(R)	X
4	EUROPEAN CONFIGURATION: EUROPLUG 2 PINS PLUS GROUND, CLASS I, R-EU-3(R)	X

4. INDICATOR: BLUE LED FOR OUTPUT PRESENT

5. INPUT CONNECTOR: IEC320/C6 AC POWER INLET WITH 3 MALE PRONGS

GlobTek, Inc.
www.globtek.com

186 Veterans Dr. Northvale, NJ 07647
Tel. 201-784-1000 Fax 201.784.0111

DWG TITLE: WALL PLUG-IN SWITCHING POWER SUPPLY, 60WATTS, 12V@5A
N.A., EURO, UK, SAA UNIVERSAL INPUT, MEDICAL, CLASS I

MODEL NO: GTM91099-6012-T3A

REV.
C

PART NO: RR9LE5000CCP-C-IM(RV)

SHEET 2 OF 4

PROPRIETARY INFORMATION:

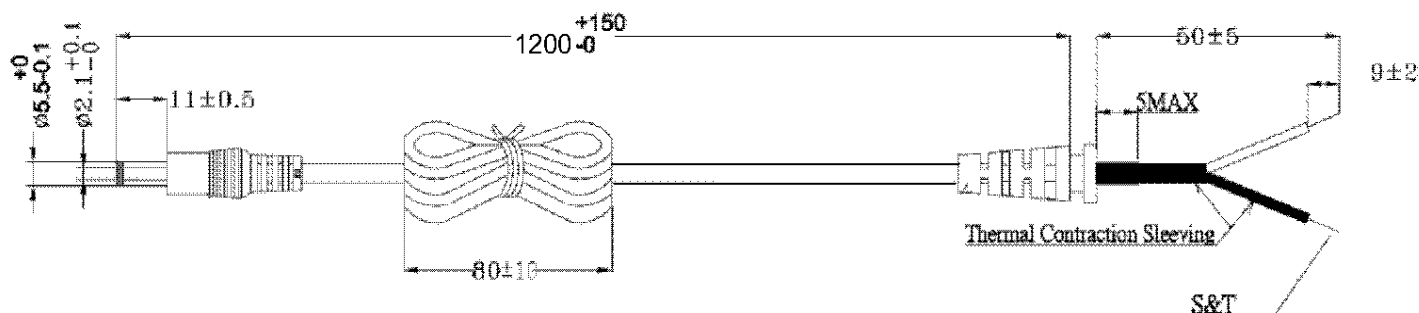
PROPRIETARY OF GLOBTEK, INC. ANY REPRODUCTION, DISCLOSURE OR USE OF THIS DRAWING IN WHOLE OR IN PART, IS HEREBY PROHIBITED EXCEPT AS SPECIFIED IN WRITING BY GLOBTEK, INC.

6. OUTPUT CORD:

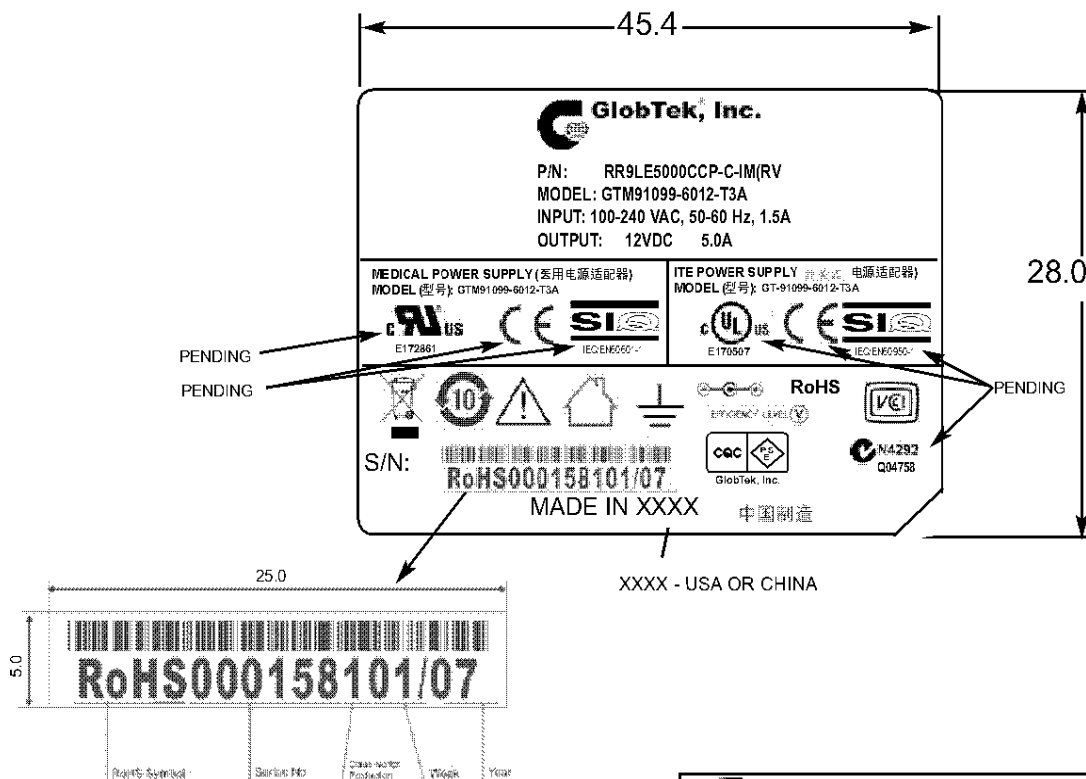
1 CONDUCTOR+SHIELD, 16 AWG STRANDED WIRE, ROUND UL# 1185, COLOR BLACK, LENGTH (L) OF CORD: 1200 +150, -0 mm. CORD IS MEASURED FROM THE HOUSING TO THE END OF OVERMOLD OF THE CONNECTOR. CABLE IS TO BE MARKED WITH WIRE GAUGE, AND ALL APPLICABLE RATING AND SAFETY APPROVALS.

7. OUTPUT CONNECTOR:

STANDARD, STRAIGHT FEMALE BARREL 5.5 x 2.1 x 11 mm WITH CENTER POSITIVE:

**8. LABEL:**

MATERIAL: .007 (0.18) THICK FLAT THERMAL TRANSFER, IMPRINTABLE, BLACK POLYESTER SHEET WITH WHITE NOMENCLATURE.
MANUFACTURER: STEVEN LABEL, MATERIAL I.D. NO.3302-33, UL FILE NO. MH12821(N), UL MATERIAL DESIGNATION FILE NO. GHW332RL.
OPTIONAL LABEL MATERIAL CAN BE SUBSTITUTED PROVIDING MATERIAL IS UL LISTED AND COMPLIES WITH APPLICABLE SAFETY REQUIREMENTS.

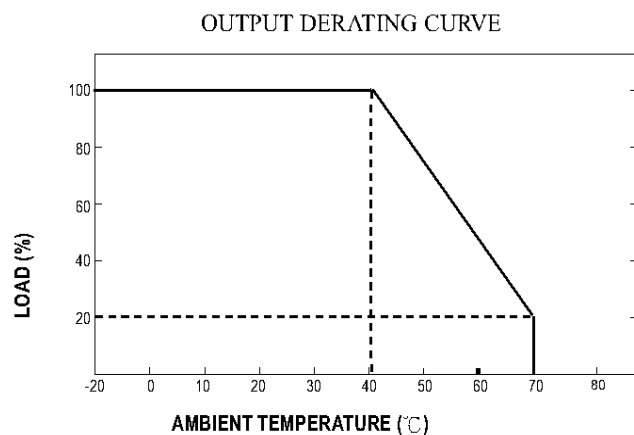
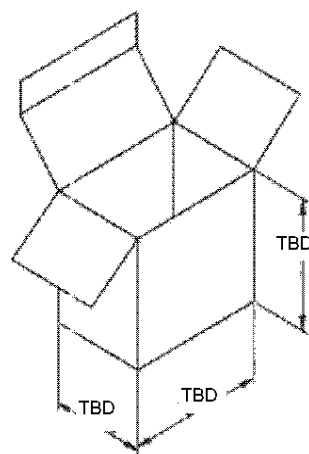
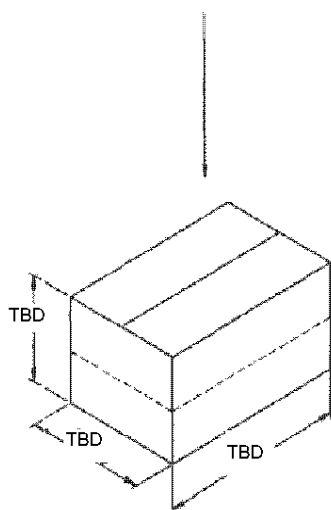
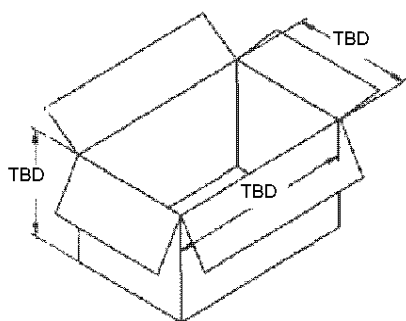


**ACTUAL POSITIONING OF SYMBOLS AND TEXT IS
SUBJECT TO CHANGE AT TIME OF MANUFACTURE**

GlobTek, Inc. www.globtek.com		186 Veterans Dr. Northvale, NJ 07647 Tel. 201-784-1000 Fax 201.784.0111
DWG TITLE: WALL PLUG-IN SWITCHING POWER SUPPLY, 60WATTS, 12V@.5A N.A., EURO, UK, SAA UNIVERSAL INPUT, MEDICAL, CLASS I		
MODEL NO: GTM91099-6012-T3A		REV. C
PART NO: RR9LE5000CCP-C-IM(RV)		SHEET 3 OF 4

PROPRIETARY INFORMATION:

PROPRIETARY OF GLOBTEK, INC. ANY REPRODUCTION, DISCLOSURE OR USE OF THIS DRAWING IN WHOLE OR IN PART, IS HEREBY PROHIBITED EXCEPT AS SPECIFIED IN WRITING BY GLOBTEK, INC.

9. OUTPUT DERATING CURVE :**10. PACKING:**

CARTON SIZE: TBD
Q'TY: TBD
G.W.: TBD



186 Veterans Dr. Northvale, NJ 07647
Tel. 201-784-1000 Fax 201.784.0111

DWG TITLE: WALL PLUG-IN SWITCHING POWER SUPPLY, 60WATTS, 12V@5A
N.A., EURO, UK, SAA UNIVERSAL INPUT, MEDICAL, CLASS I

MODEL NO: GTM91099-6012-T3A

REV.
C

PART NO: RR9LE5000CCP-C-IM(RV

SHEET 4 OF 4

Model List

GTM91099-WWVV-X.X-AB series

M can be "M" or "-" for market identification and not related to safety

WW is the rated output wattage designation, with a maximum value of "60";

VV is the standard rated output voltage designation, with a maximum value of "48";

-X.X denotes the optional deviation, subtracted or added from standard output voltage in 0.1 volt increments or blank to indicate the no voltage different;

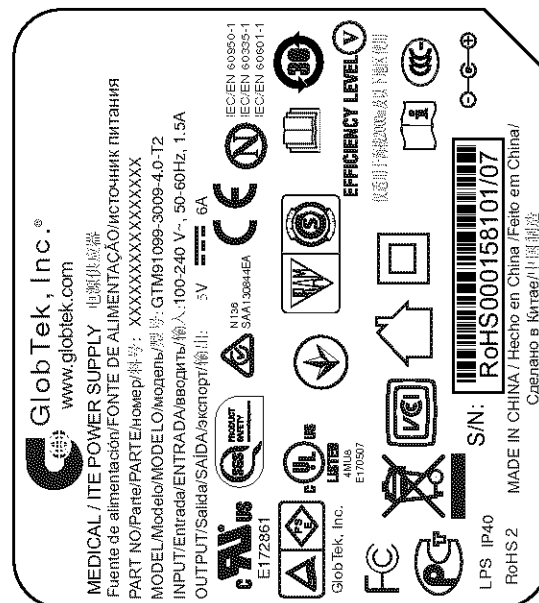
VV-X.X together denotes the voltage rang 5V to 36V.

A: T is External/Desktop model;

When A=T, B can be 2 or 3A, 2 presents Class II, 3A presents Class I

GTM91099-WW09-X.X-T2	5-9V	6A	50W	XF00794	Class II
GTM91099-WW15-X.X-T2	9.1-15V	6A	60W	XF00694	
GTM91099-WW24-X.X-T2	15.1-24V	4A	60W	XF00695	
GTM91099-WW48-X.X-T2	24.1-48V	2.5A	60W	XF00731	
GTM91099-WW09-X.X-T3A	5-9V	6A	50W	XF00794	Class I
GTM91099-WW15-X.X-T3A	9.1-15V	6A	60W	XF00694	
GTM91099-WW24-X.X-T3A	15.1-24V	4A	60W	XF00695	
GTM91099-WW48-X.X-T3A	24.1-48V	2.5A	60W	XF00731	

Label for GTM91099-T2



Label for GTM91099-T3A



Test Record No. 1

Only limited tests are considered necessary for model GTM91099-WWVV-X.X-AB series, due to identical to the same model in section E341350-A20.

The following tests were conducted:

Test	Testing Location/Comments
End Product Reference Page	
General Guidelines	
Power Supply Reference Page	
Guide Information Page - Maximum Output Voltage, Current, and Volt Ampere Measurement (1.2.2.1)	
Limited Power Source Measurements (2.5)	
Touch Current (Single-Phase; TN/TT System) (5.1, Annex D)	

Test results are valid only for the tested equipment. These tests are considered representative of the products covered by this Test Report. The test methods and results of the above tests have been reviewed and found to be in accordance with the requirements in the Standard(s) referenced at the beginning of this Test Report.

The following supplements are provided as a part of this Test Record. NOTE: These supplements are only available to the Applicant via the CDA system.

Type	Supplement Id	Description
Datasheet	2-01	Datasheet DS-1
Datasheet	2-02	Datasheet DS-2

Test Record No. 2

Only limited tests were considered necessary for Model GTM91099-3009-4.0-T2 and Model GTM91099-3009-4.0-T3A due to similarities to previously tested construction except for employing the following different:

- (1) Evaluate the Model GTM91099-3009-4.0-T2 and Model GTM91099-3009-4.0-T3A in Maximum Room Ambient Temperature 70 degree C;
 - (2) Add the Label Artwork for Model GTM91099-3009-4.0-T2 and Model GTM91099-3009-4.0-T3A in Enclosure;
 - (3) Add "Optional" for Fuse (FS2).
- See Test Record No. 1 for details.

The following tests were conducted:

Test	Testing Location/Comments
End Product Reference Page	
General Guidelines	
Power Supply Reference Page	
Input: Single-Phase (1.6.2)	
Stress Relief (4.2.7, 4.2.1)	
Heating (4.5.1, 1.4.12, 1.4.13)	
Component Failure (5.3.1, 5.3.4, 5.3.7)	
Transformer Abnormal Operation (5.3.3, 5.3.7b, Annex C.1)	
Power Supply Output Short-Circuit/Overload (5.3.7)	

Test results are valid only for the tested equipment. These tests are considered representative of the products covered by this Test Report. The test methods and results of the above tests have been reviewed and found to be in accordance with the requirements in the Standard(s) referenced at the beginning of this Test Report.

The following supplements are provided as a part of this Test Record. NOTE: These supplements are only available to the Applicant via the CDA system.

<u>Type</u>	<u>Supplement Id</u>	<u>Description</u>
Attachment	2-03	CRD
Datasheet	2-04	DataSheet

Issue Date: 2013-02-05

Page 3 of 3

Report Reference #

E341351-A59-UL

Revision Date: 2016-08-05

Test Record

Test Record No. 3

No test was considered necessary for correcting typo errors and adding missing components.

Project No. 4787098106 File E341351 Page 1
Compliance
Review
Conducted by: Gato Lin/ Clifton Ho Gato Lin/ Clifton Ho Date 2015-10-19
Printed Name Signature

When a measurement is needed to determine compliance with a clause the actual measured value must be recorded in the space provided. A simple 'Yes' / 'No' response is not sufficient. (See 'UL Certification Program - Work Instructions for Completion of Construction Review Datasheets (CRD) For C-UL Mark' (00-OP-W0038) for details).

CONSTRUCTION COMPLIANCE REVIEW RECORD

Sample Identification -

Sample Card No.	Date Received	Sample No.	Manufacturer, Product Identification and Ratings
2218834	2015-10-02	S1	GLOBTEK (HONG KONG) LTD, Switching Power Adapter, MODEL: GTM91099-3009-4.0-T2

Measurement Instrument Information -

Inst. ID No.	Instrument Type	Function/Range	Last Cal. Date	Next Cal. Date
See LPM for details				

The following additional information is required when using client's or rented equipment, or when a UL ID Number for an instrument number is not used. The Inst. ID No. below corresponds to the Inst. ID No. above.

Inst. ID No.	Make/Model/Serial Number/Asset No.

[X] Measurement instrument information is recorded on UL's Laboratory Project Management (LPM) database. (This statement may be selected only if CRDs are completed at a UL facility)

Remark:

No construction review has been required due to only employing with the following revision:

- (1) Evaluate the Model GTM91099-3009-4.0-T2 and Model GTM91099-3009-4.0-T3A in Maximum Room Ambient Temperature 70 degC;
- (2) Add the Label Artwork for Model GTM91099-3009-4.0-T2 and Model GTM91099-3009-4.0-T3A in Enclosure;
- (3) Add "Optional" for Fuse (FS2).

Project No. 4787098106 File E341351 Page 2
Compliance
Review
Conducted by: Gato Lin/ Clifton Ho Gato Lin/ Clifton Ho Date 2015-10-19
Printed Name Signature

CONSTRUCTION COMPLIANCE REVIEW:

The sample was reviewed for compliance with the construction requirements in the standard indicated below and a complete record including measurements to support compliance with those requirements is detailed in Report Reference No. E341351-A59.

Standard	CAN/CSA C22.2 No. 60950-1-07, 2nd Edition, 2014-10	2
	<u>UL 60950-1, 2nd Edition, 2014-10-14</u>	<u>Edition 2</u>