

**Test Certificate No. 9312319134**

In accordance with Clause 12 of the Standards Law – 1953

Details of order:

Name of customer	: GlobTek, Inc.
Address	: 186 Veterans Drive, Northvale, NJ 07647, USA
Date of order	: 07/07/13

Description of sample:

Direct Plug-in or Open frame Power Supply	
Model tested	: GTM41060-1505
Manufacturer	: GlobTek, Inc.
Country of origin	: China
(see Broadened Description of the Product for additional details)	

Sampling details:

The sample was taken on 08/07/13
Sample size: 2

Nature of test:

To test with the requirements of clauses: 4.11 - Power input 7 – ME EQUIPMENT identification, marking and documents 8.6 – Protective earthing, functional earthing and potential equalization of ME EQUIPMENT 8.7 – LEAKAGE CURRENTS and PATIENT AUXILIARY CURRENTS 8.8.3 - Dielectric strength 8.11 – MAINS PARTS compliance, components and layout 17 – Electromagnetic compatibility of ME EQUIPMENT and ME SYSTEMS Of Israel Standard SI 60061 Part 1 – Medical equipment: General requirements for basic safety and essential performance, Mar. 2008.
--

This document contains 4 pages and may be used only in full.
--

The test results in this report refer only to the item tested.

This document alone is not sufficient for the release of goods from customs.
--

Test Conclusions:

The sample complies with the requirements of the standard, according to the above tests. The sample doesn't tested by the other clause of the standard.
--

Remarks:

1. Validation of the CB Test Certificate No. SI-2469 (CBTR No. – T223-0286/09), dated 19.11.09, IEC 60601-1: 2005 + CORR. 1 (2006) + CORR. 2 (2007) issued by SIQ, Slovenia.
2. Photos of the product are given on Annex A of this certificate

Details are given on the following pages of this document.
--

The original test certificate was signed by:

Name : Ayadeh Kamal

Position: Test Engineer

on: 16/08/2013

I confirm that this is a true translation of the Hebrew original. Only the original test certificate is authentic

Name : Igal Zusman

Position: Head of Branch, Electronic & Communication Equipment

date: 28/08/2013

This document does not permit marking the product with SII Mark



Test Certificate No. 9312319134

In accordance with Clause 12 of the Standards Law – 1953

Page 2 of 4 pages

Broadened description of the product

Description and marking:

Direct Plug-in or Open frame Power Supply Model: GTM41060-1505
Product of GlobTek, Inc. USA
Trade Name: GlobTek
Country of manufacturer: China

The following is marked on the product:

GlobTek, Inc.
Medical Power Supply
Model : GTM41060-1505
Input : 100-240v~ 50-60Hz 0.6A
Output : 5V== 3A
Class II Equipment C/UR/US/E172861
Manufactured by GlobTek (Suzhou) Co., Ltd
Made in China

Critical Components:

T1 : XF00290
L1 : NF00009B
CX1 : 0.47uF 310V~ C/UR/US
C1 : 33uF 400V
PC1 : EL 817
F1,F2 : T1A/250V~ VDE C/UR/US

This document does not permit marking the product with SII Mark

Test Certificate No. 9312319134

In accordance with Clause 12 of the Standards Law – 1953

Page 3 of 4 pages

Test Results:

Clause no. in Standard	Property tested	Defects found / Remarks	Compliance with Standard
4.11	Power input	Measured: 153mA	Complies
7	ME EQUIPMENT identification, marking and documents	CLASS II EQUIPMENT, NO APPLIED PARTS	Complies
8.6	Protective earthing, functional earthing and potential equalization of ME EQUIPMENT	CLASS II EQUIPMENT	Not applicable
8.7	LEAKAGE CURRENTS and PATIENT AUXILIARY CURRENTS	Measured: $E_nLC = 0.4\mu A(ON)$	Complies
8.8.3	Dielectric strength	Tested at voltages: 3KVAC (2 MOPP)	Complies
8.11	MAINS PARTS compliance, components and layout		Complies
17	Electromagnetic compatability of ME EQUIPMENT and ME SYSTEMS		Complies

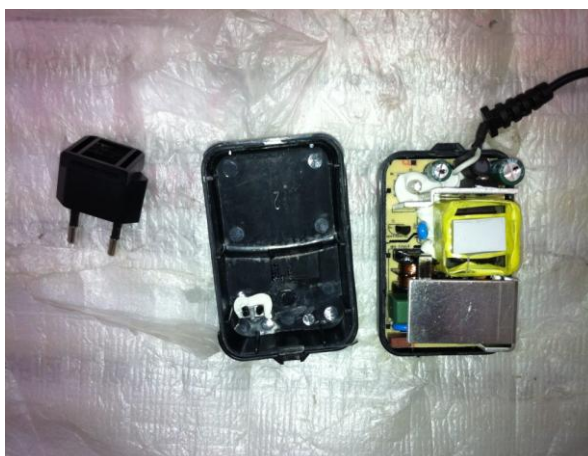
This document does not permit marking the product with SII Mark

Test Certificate No. 9312319134

In accordance with Clause 12 of the Standards Law – 1953

Page 4 of 4 pages

Annex A – Photo of the samples tested



This document does not permit marking the product with SII Mark