


1.0 Reference and Address			
Report Number	191200266TWN-001	Original Issued: 30-Apr-2020	Revised: None
Standard(s)	Audio/Video, Information And Communication Technology Equipment - Part 1: Safety Requirements [UL 62368-1:2014 Ed.2]		
	Audio/Video, Information And Communication Technology Equipment - Part 1: Safety Requirements [CSA C22.2#62368-1:2014 Ed.2]		
	Vehicle Battery Adapters [UL 2089:2011 Ed.3 +R:07May2018]		
Applicant	GlobTek, Inc.	Manufacturer	GlobTek (Suzhou) Co., Ltd.
Address	186 Veterans Drive, NORTHVALE, NJ 07647	Address	Building 4 No. 76 JinLing East Road, Suzhou Industrial Park, SUZHOU, Jiangsu, 215021
Country	USA	Country	China
Contact	Mr. Michael Krakovyak	Contact	Demon.Zhou
Phone	+1-201-784-1000 Ext 106	Phone	+86 512 6279 0301 Ext 189
FAX	201-784-0111	FAX	+86 512 6279 0355
Email	krakovyakm@globtek.us	Email	demon.zhou@globtek.cn

2.0 Product Description	
Product	DC/DC Switching Power Supply
Brand name	 GlobTek, Inc.
Description	The equipment is a DC/DC switching power supply which intended for using Audio/Visual Information And Communication Technology Equipment (A/V I.C.T.E.) and for indoor use. The equipment employs one USB port and consists of electronic components mounted on PCB then housed with plastic enclosure which secured by mechanical fit and ultrasonic welding. The equipment was submitted and evaluated for maximum manufacturer's recommended ambient (Tmra) of 50 degree C.
Models	GTD83050- followed by two characters; followed by 05.
Model Similarity	Explanation of model GTD83050-**05: The symbol "***" is 2 digit number from 01 to 05 with interval of 1, represents the standard output wattage.
Ratings	I/P: 12/24 VDC, 1 A max.
Other Ratings	USB O/P: 5 Vdc, 1 A max., 5 W max.

3.0 Product Photographs

Photo 1 - External view of EUT

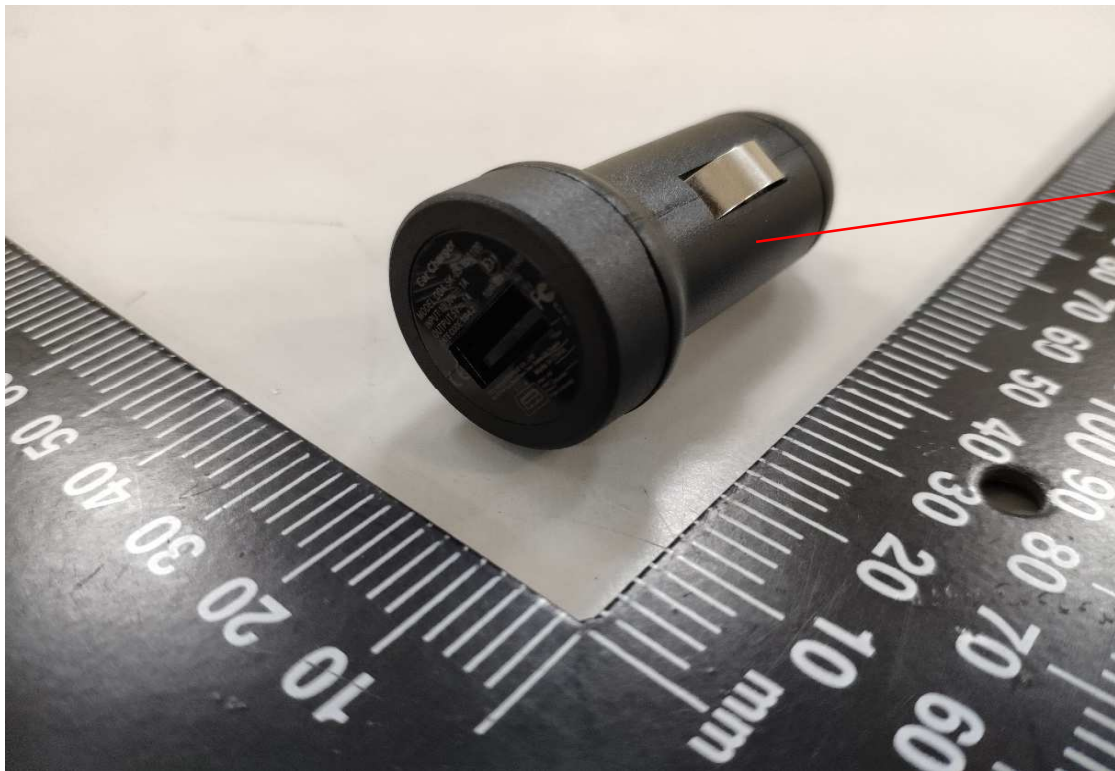


Photo 2 - External view of EUT



3.0 Product Photographs

Photo 3 - Internal view of EUT

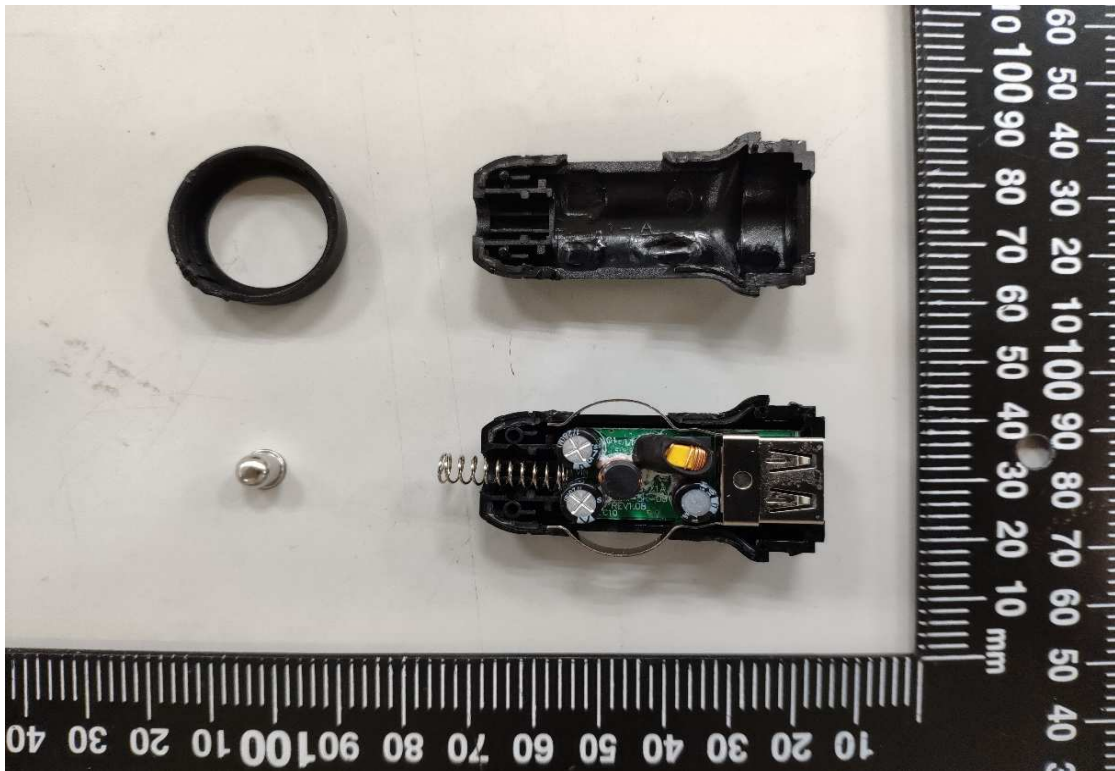
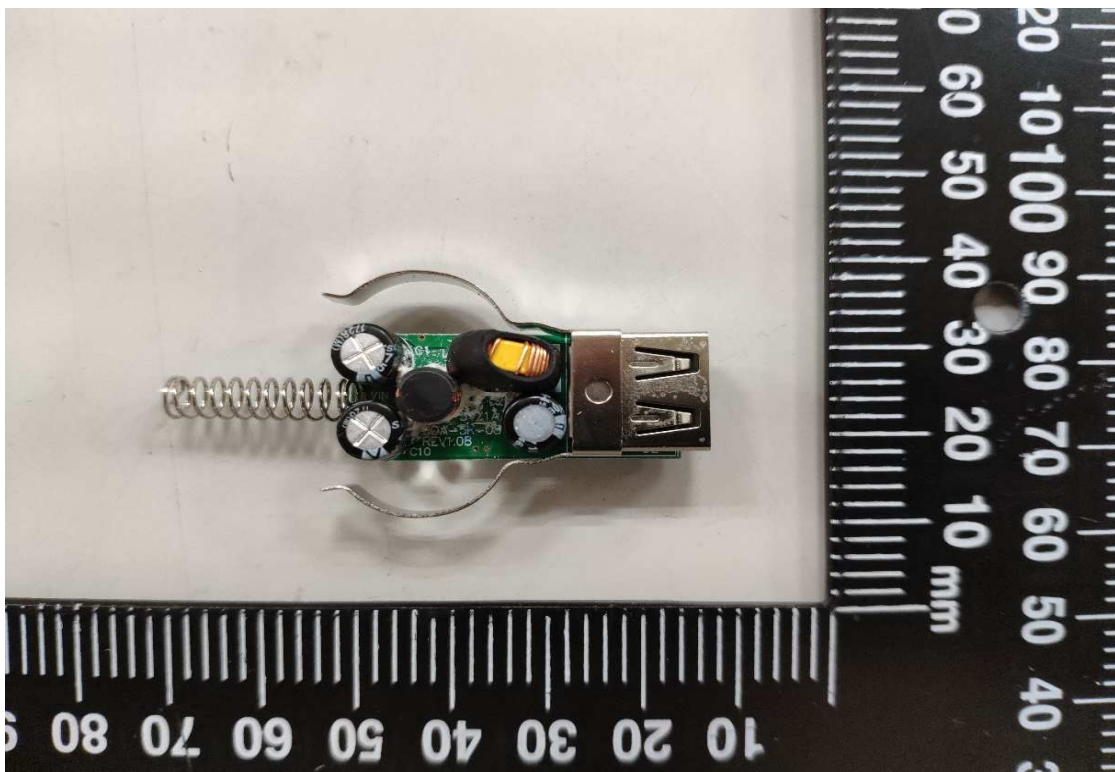
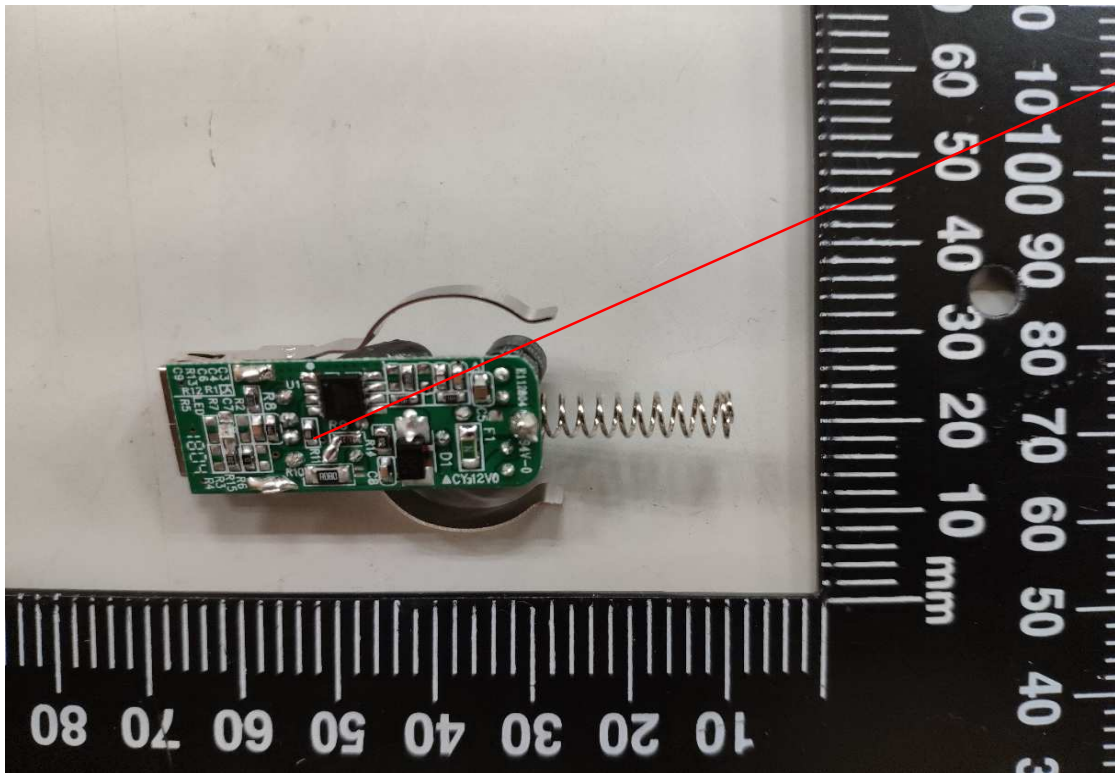


Photo 4 - Top view of PCB



3.0 Product Photographs

Photo 5 - Bottom view of PCB



4.0 Critical Components						
Photo #	Item no. ¹	Name	Manufacturer/ trademark ²	Type / model ²	Technical data and securement means.	Mark(s) of conformity ³
1	1	Marking (Not shown)	Various	Various	Located on the outer enclosure. Contains minimum the following information: Control No., Model No., Input rating, as well as cETL and ETLus Marking. Refer to Illustration 1 for details.	cURus
1	2	Plastic enclosure	SABIC INNOVATIVE PLASTICS US L L C	SE1X(GG)(f1)	V-1 or better, HAI = 0, HWI = 0, min. 1.5 mm thickness, RTI Elec = Str = 110 °C, RTI Imp = 105 °C	cURus
5	3	Printed Wiring Board	Various	Various	Recognized Component. Rated min. V-1, min. 105 °C	cURus
1	4	Fuse (Not shown)	XC ELECTRONICS (SHENZHEN) CORP LTD	12T	2 A, 63 V	cURus
			SUZHOU WALTER ELECTRONIC CO LTD	F92 series		cURus
			AEM COMPONENTS (SUZHOU) CO LTD	F1206 series		cURus

NOTES:

- 1) Not all item numbers are indicated (called out) in the photos, as their location is obvious.
- 2) "Various" means any type, from any manufacturer that complies with the "Technical data and securement means" and meets the "Mark(s) of conformity" can be used.
- 3) Indicates specific marks to be verified, which assures the agreed level of surveillance for the component. "NR" - indicates Unlisted and only visual examination is necessary. "See 5.0" indicates Unlisted components or assemblies to be evaluated periodically refer to section 5.0 for details.

5.0 Critical Unlisted CEC Components

No Unlisted CEC components are used in this report.

6.0 Critical Features

Recognized Component - A component part, which has been previously evaluated by an accredited certification body with restrictions and must be evaluated as part of the basic product considering the restrictions as specified by the Conditions of Acceptability.

Listed Component - A component part, which has been previously Listed or Certified by an accredited Certification Organization with no restrictions and is used in the intended application within its ratings.

Unlisted Component - A part that has not been previously evaluated to the appropriate designated component standard. It may also be a Listed or Recognized component that is being used outside of its evaluated Listing or component recognition.

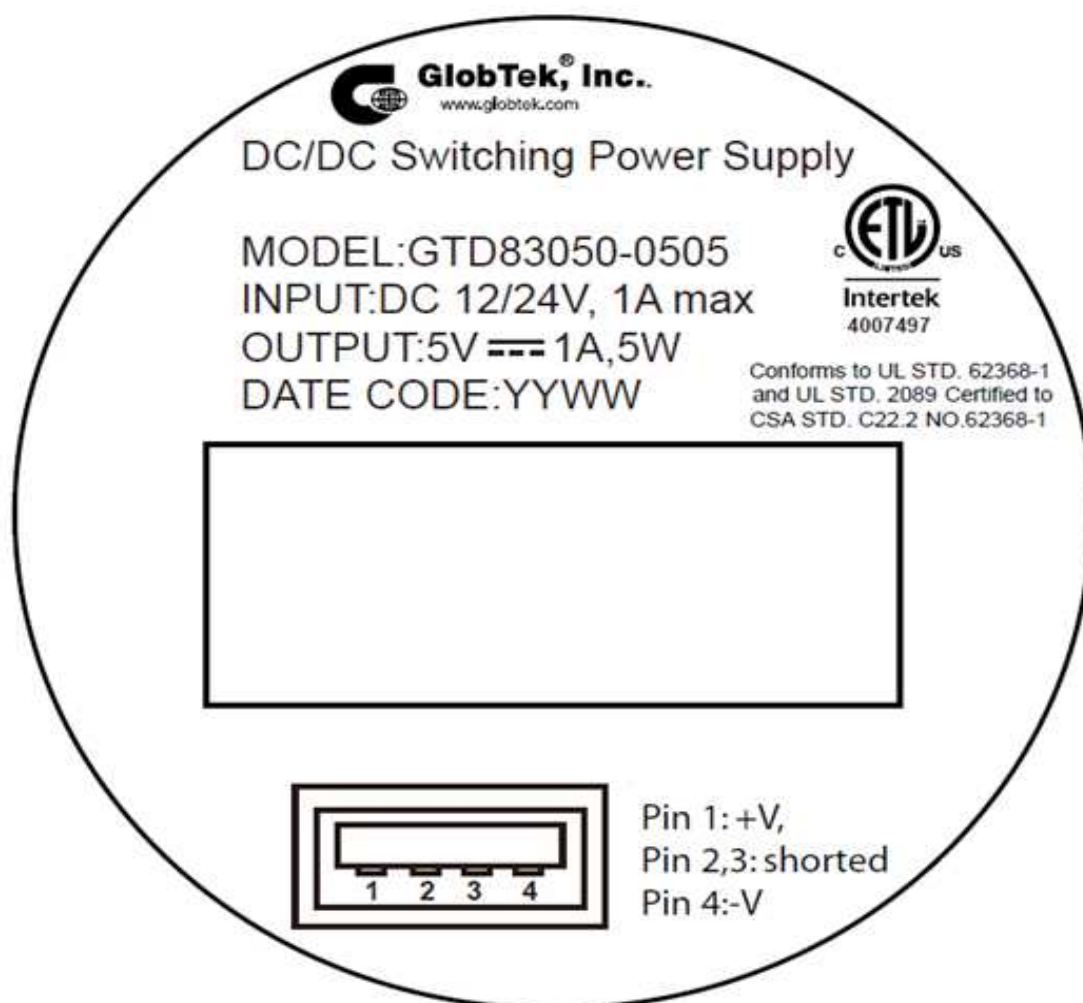
Critical Features/Components - An essential part, material, subassembly, system, software, or accessory of a product that has a direct bearing on the product's conformance to applicable requirements of the product standard.

Construction Details - For specific construction details, reference should be made to the photographs and descriptions. All dimensions are approximate unless specified as exact or within a tolerance. In addition to the specific construction details described in this Report, the following general requirements also apply.

1. Spacing - Only ES1 circuits within the equipment. No spacing is required.
2. Mechanical Assembly - Components such as switches, fuseholders, connectors, wiring terminals and display lamps are mounted and prevented from shifting or rotating by the use of lockwashers, starwashers, or other mounting format that prevents turning of the component. The dimension of enclosure described in Illustration 4 of Section 7.
3. Corrosion Protection - All ferrous metal parts are protected against corrosion by painting, plating or the equivalent.
4. Accessibility of Live Parts - Only ES1 circuits within the equipment. No live parts in primary circuit within the equipment.
5. Grounding - The equipment is classified as Class III, no required.
6. Polarized Connection - NA
7. Internal Wiring - No internal wirings
8. Schematics - Refer to Illustration 2 and 3 of section 7 for details.
9. Markings - The product is marked on a component labeling system the with applicant's name, trade name, trademark or other descriptive marking, catalog, model number, date code, electrical rating is optional provided. Refer to item 1 of section 4 and Illustration 1 of section 7 for details.
10. Cautionary Markings - NA
11. Installation, Operating and Safety Instructions - NA

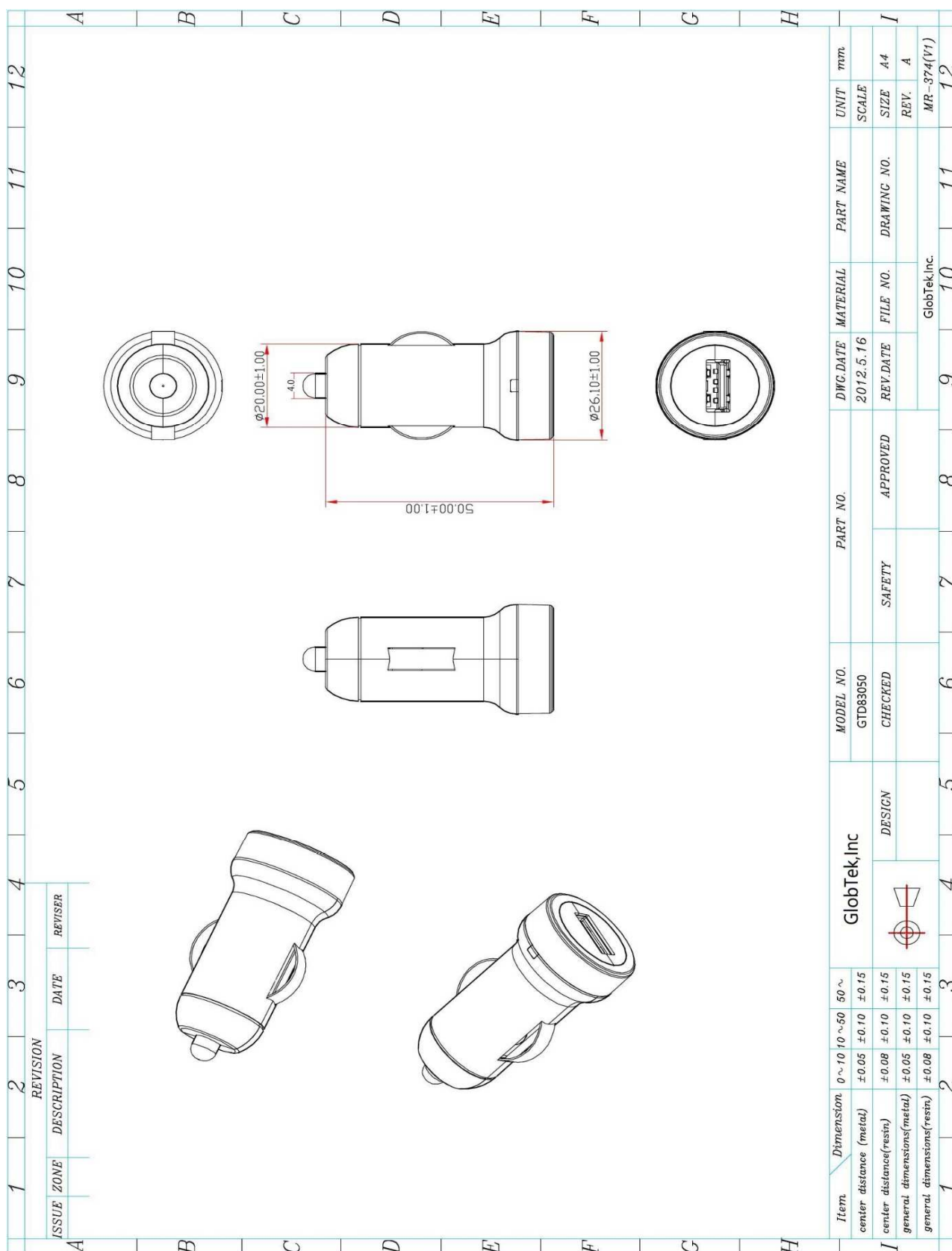
7.0 Illustrations



Illustration 1 - Marking Label



7.0 Illustrations

Illustration 4 - Dimension schematic



8.0 Test Summary			
Evaluation Period	January 15, 2020 - January 17, 2020		Project No. TWJ19120627
Sample Rec. Date	19-Dec-2019	Condition	Prototype
			Sample ID. P191200227
Test Location	Intertek Testing Services Taiwan Ltd. (Taipei office) address: 5F, No. 423, Ruiguang Rd., Neihu District, Taipei 114, Taiwan		
Test Procedure	Testing Lab		
Determination of the result includes consideration of measurement uncertainty from the test equipment and methods. The product was tested as indicated below with results in conformance to the relevant test criteria.			
The following tests were performed:			
	UL 62368-1:2014 Ed.2		
	CSA C22.2#62368-1:2014 Ed.2	UL 2089:2011 Ed.3 +R:07May2018	UL 746C:2018 Ed:7
Test Description	Clause	Clause	Clause
Maximum output voltage test	--	23	--
Temperature measurements	5.4.1.4, 6.3.2, 9.0, B.2.6	25	--
Input test	B.2.5	24	--
Dielectric voltage-withstand test	--	26	--
Simulated abnormal operating conditions	B.3	--	--
Simulated single fault conditions	B.4	27	--
Marking durability test	F.3.10	--	--
Limited power source test	Q.1	--	--
Steady force test – 30 N	T.3	--	--
Drop test	T.7	--	--
Stress relief Test	T.8	--	29
Determination of accessible parts test	V.1	--	--
Resistance to crushing test	--	28	--
Low voltage limited energy circuits	--	15.2	--
8.1 Signatures			
A representative sample of the product covered by this report has been evaluated and found to comply with the applicable requirements of the standards indicated in Section 1.0.			
Completed by:	Viper Lai	Reviewed by:	Dan Chen / Allen Huang
Title:	Project handler	Title:	Reviewer
Signature:		Signature:	

9.0 Correlation Page For Multiple Listings

The following products, which are identical to those identified in this report except for model number and Listee name, are authorized to bear the ETL label under provisions of the Intertek Multiple Listing Program.

BASIC LISTEE	GlobTek, Inc.
Address	186 Veterans Drive, NORTHVALE, NJ 07647
Country	USA
Product	DC/DC Switching Power Supply

MULTIPLE LISTEE 1	None
Address	
Country	
Brand Name	
ASSOCIATED MANUFACTURER	
Address	
Country	
MULTIPLE LISTEE 1 MODELS	BASIC LISTEE MODELS

MULTIPLE LISTEE 2	None
Address	
Country	
Brand Name	
ASSOCIATED MANUFACTURER	
Address	
Country	
MULTIPLE LISTEE 2 MODELS	BASIC LISTEE MODELS

MULTIPLE LISTEE 3	None
Address	
Country	
Brand Name	
ASSOCIATED MANUFACTURER	
Address	
Country	
MULTIPLE LISTEE 3 MODELS	BASIC LISTEE MODELS

10.0 General Information

The Applicant and Manufacturer have agreed to produce, test and label ETL Listed products in accordance with the requirements of this Report. The Manufacturer has also agreed to notify Intertek and to request authorization prior to using alternate parts, components or materials.

COMPONENTS

Components used shall be those itemized in this Intertek report covering the product, including any amendments and/or revisions.

LISTING MARK

The ETL Listing mark applied to the products shall either be separable in form, such as labels purchased from Intertek, or on a product nameplate or other media only as specifically authorized by Intertek. Use of the mark is subject to the control of Intertek.

The mark must include the following four items:

- 1) applicable country identifiers "US" and/or "C" or "US", "C" and "EU"
- 2) the word "Listed" or "Classified" or "Recognized Component" (whichever is appropriate)
- 3) a control number issued by Intertek
- 4) a product descriptor that identifies the standards used for certification. Example:

For US standards, the words, "Conforms to" shall appear with the standard number along with the word, "Standard" or "Std." Example: "Conforms to ANSI/UL Std. XX."

For Canadian standards, the words "Certified to CAN/CSA Standard CXX No. XX." shall be used, or abbreviated, "Cert. to CAN/CSA Std. CXX No. XX."

Can be used together when both standards are used.

Note: A facsimile must be submitted to Intertek, Attn: Follow-up Services for approval prior to use.

The facsimile need not have a control number. A control number will be issued **after signed Certification Agreements** have been received by the Follow-up Services office, approval of the facsimile of your proposed Listing Mark, satisfactory completion of the Listing Report, and scheduling of a factory assessment in your facility.

MANUFACTURING AND PRODUCTION TESTS

Manufacturing and Production Tests shall be performed as required in this Report.

FOLLOW-UP SERVICE

Periodic unannounced audits of the manufacturing facility (and any locations authorized to apply the mark) shall be scheduled by Intertek. An audit report shall be issued after each visit. Special attention will be given to the following:

1. Conformance of the manufactured product to the descriptions in this Report.
2. Conformance of the use of the ETL mark with the requirements of this Report and the Certification Agreement.
3. Manufacturing changes.
4. Performance of specified Manufacturing and Production Tests.

In the event that the Intertek representative identifies non-conformance(s) to any provision of this Report, the Applicant shall take one or more of the following actions:

1. Correct the non-conformance.
2. Remove the ETL Mark from non-conforming product.
3. Contact the issuing product safety evaluation center for instructions.

10.1 Evaluation of Unlisted Components

Because Unlisted Components are uncontrolled, and they do not fall under a third party follow up program, Intertek may require these components to be tested and/or evaluated at least once annually, more often for certain components, as part of the independent certification process. The Unlisted Components in Section 5.0 require testing and/or evaluation as indicated.

Note to Intertek Follow Up Inspector: The Component Evaluation Center, CEC, will notify you in writing when these components must be selected and sent to the CEC for re-evaluation

Ship the samples to:
Intertek Testing Services Taiwan Limited
ETL Component Evaluation Center
5/F., No. 423, Ruiguang Road, Neihu District
Taipei 114, Taiwan
Attn: Sample Room

Sample Disposition: Due to the destructive nature of the testing, all samples will be discarded at the conclusion of testing unless, the manufacturer specifically requests the return of the samples. The request for return must accompany the initial component shipment.

11.0 Manufacturing and Production Tests

The manufacturer agrees to conduct the following Manufacturing and Production Tests as specified:

Required Tests

None

12.0 Revision Summary

The following changes are in compliance with the declaration of Section 8.1:

Date/ Proj # Site ID	Project Handler/ Reviewer	Section	Item	Description of Change
				None