

UL TEST REPORT AND PROCEDURE

Standard:	UL 60950-1, 2nd Edition, 2007-03-27 (Information Technology Equipment - Safety - Part 1: General Requirements) CSA C22.2 No. 60950-1-07, 2nd Edition, 2007-03 (Information Technology Equipment - Safety - Part 1: General Requirements)
Certification Type:	Listing
CCN:	QQGQ, QQGQ7 (Power Supplies for Information Technology Equipment Including Electrical Business Equipment)
Product:	Switching Power Adapter
Model:	GT-41132-WWVV-X.X-TZ series: WW is the rated output wattage designation, with a maximum value of "60"; VV is the standard rated output voltage designation, with a maximum value of "24"; -X.X is optional or blank and denotes the output voltage differentiator, subtracting or adding X.X volts from standard output voltage VV in 0.1V increments Z presents different inlets, where "3" presents C14, "3A" presents C6.
Rating:	I/P: 100-240 Vac, 50-60 Hz, 1.5 A For Models GT-41132-6012-T3, GT-41132-6012-T3A O/P: 12 Vdc, 5 A For Models GT-41132-6024-5.0-T3, GT-41132-6024-5.0-T3A O/P: 19 Vdc, 3.42 A For Models GT-41132-6024-T3, GT-41132-6024-T3A O/P: 24 Vdc, 2.7 A
Applicant Name and Address:	GLOBTEK (HONG KONG) LTD UNIT 1402, BENSON TOWER 74 HUNG TO RD KWUN TONG KOWLOON HONG KONG

This is to certify that representative samples of the products covered by this Test Report have been investigated in accordance with the above referenced Standards. The products have been found to comply with the requirements covering the category and the products are judged to be eligible for Follow-Up Service under the indicated Test Procedure. The manufacturer is authorized to use the UL Mark on such products which comply with this Test Report and any other applicable requirements of Underwriters Laboratories Inc. ('UL') in accordance with the Follow-Up Service Agreement. Only those products which properly bear the UL Mark are considered as being covered by UL's Follow-Up Service under the indicated Test Procedure.

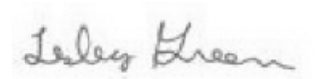
The applicant is authorized to reproduce the referenced Test Report provided it is reproduced in its entirety.

Any information and documentation involving UL Mark services are provided on behalf of Underwriters Laboratories Inc. (UL) or any authorized licensee of UL.

Prepared by: HiuFai Seto
Underwriters Laboratories Inc.

A rectangular box containing a handwritten signature in dark ink, which appears to read "Seto".

Reviewed by: Lesley C Green
Underwriters Laboratories Inc.

A rectangular box containing a handwritten signature in dark ink, which appears to read "Lesley Green".

Supporting Documentation

The following documents located at the beginning of this Procedure supplement the requirements of this Test Report:

- A. Authorization - The Authorization page may include additional Factory Identification Code markings.
- B. Generic Inspection Instructions -
 - i. Part AC details important information which may be applicable to products covered by this Procedure. Products described in this Test Report must comply with any applicable items listed unless otherwise stated in the body of this Test Report.
 - ii. Part AE details any requirements which may be applicable to all products covered by this Procedure. Products described in this Test Report must comply with any applicable items listed unless otherwise stated in the body of each Test Report.
 - iii. Part AF details the requirements for the UL Certification Mark which is not controlled by the technical standard used to investigate these products. Products are permitted to bear only the Certification Mark(s) corresponding to the countries for which it is certified, as indicated in each Test Report.

Product Description

Electronic components mounted on PWB and housed in a plastic enclosure.

Model Differences

All models are similar to each other except for transformer secondary winding turns, secondary components (Resistor, R21, R23) and (Diode D3, D4), output rating. (See Enclosure 7-01 for model difference.)

Models GT-41132-WWVV-X.X-T3 are similar to models GT-41132-WWVV-X.X-T3A except for inlet type.

Technical Considerations

- Equipment mobility : movable
- Connection to the mains : pluggable A
- Operating condition : continuous
- Access location : operator accessible
- Over voltage category (OVC) : OVC II
- Mains supply tolerance (%) or absolute mains supply values : +10%, -10%
- Tested for IT power systems : No
- IT testing, phase-phase voltage (V) : N/A
- Class of equipment : Class I (earthed)

- Considered current rating (A) : 1.5A
- Pollution degree (PD) : PD 2
- IP protection class : IP X0
- Altitude of operation (m) : <=2000
- Altitude of test laboratory (m) : <=2000
- Mass of equipment (kg) : 0.23 kg max.
- The product was submitted and evaluated for use at the maximum ambient temperature (Tma) permitted by the manufacturer's specification of: 40 degree C
- The means of connection to the mains supply is: Pluggable A, Detachable power cord
- The product is intended for use on the following power systems: TN
- The equipment disconnect device is considered to be: Appliance inlet
- The following accessible locations (with circuit/schematic designation) are within a limited current circuit: CY1
- The following circuit locations (with circuit/schematic designation) were investigated as a limited power source (LPS): Output
- The following are available from the Applicant upon request: Installation (Safety) Instructions / Manual

Additional Information

Revision: SR8227620-T001

Transfer File from the File E336418, Vol. X7, E336418-A38 into the File E341351, Vol. X8, E341351-A39.

Additional Standards

The product fulfills the requirements of: N/A

Markings and instructions

Clause Title	Marking or Instruction Details
Power rating - Ratings	Ratings (voltage, frequency/dc, current)

Power rating - Company identification	Listee's or Recognized company's name, Trade Name, Trademark or File Number
Power rating - Model	Model Number
Fuses - Rating	Rated current and voltage and type located on or adjacent to fuse or fuseholder.
LPS	(Optional) Marked "LPS" or "Limited Power Supply".
Special Instructions to UL Representative Inspect the transformer(s) listed in BD1.1 per AA1.1- (C). When the tests are conducted at other location, inspect test record and specification sheet provided by the component manufacturer. Verify the specification sheet indicates 100% routine test specified in BD1.1 be conducted at the component manufacturer.	

Production-Line Testing Requirements
Electric Strength Test Special Constructions - Refer to Generic Inspection Instructions, Part AC for further information.

Model	Component	Removable Parts	Test probe location	V rms	V dc	Test Time, s
All models	Transformer T1	N/A	Primary to Secondary	3000	4242	1

Earthing Continuity Test Exemptions - This test is not required for the following models:
Electric Strength Test Exemptions - This test is not required for the following models:
Electric Strength Test Component Exemptions - The following solid-state components may be disconnected from the remainder of the circuitry during the performance of this test:
Sample and Test Specifics for Follow-Up Tests at UL

Model	Component	Material	Test	Sample(s)	Test Specifics
N/A					

TABLE: List of Critical Components

Object/part or Description	Manufacturer/ trademark	type/model	technical data	CCN	Marks of Conformity
Enclosure	Sabic Innovative Plastics China Co. Ltd.	SE1X	Two pieces construction, secured together by ultrasonic, rated V-1 or better, 105 degree C min. Minimum 2.0 mm thickness. see enclosure 4-01 for detail. (min. 2.4 mm thickness for side of enclosure, min. 2.1 mm thickness for bottom of enclosure)	QMFZ2	UL
Appliance Inlet (For Models GT-41132-WVVV-X.X-T3A)	Tecx-Unions Technology Corp	TU-333	Rated 250Vac, 2.5 A, 105 degree C min.	AXUT2	UL
Appliance Inlet (For Models GT-41132-WVVV-X.X-T3A) (Alternate)	Supercom Wire & Cable Co Ltd	SC-14	Rated 250Vac, 2.5 A, 75 degree C min.	AXUT2	UL
Appliance Inlet (For Models GT-41132-WVVV-X.X-T3A) (Alternate)	Sun Fair Electric Wire & Cable (HK) Co Ltd	S-02	Rated 250Vac, 2.5 A, 75 degree C min.	AXUT2	UL
Appliance Inlet (For Models GT-41132-WVVV-X.X-T3A) (Alternate)	Yueqing Leci Electronics Co Ltd	DB-6	Rated 250Vac, 2.5 A, 75 degree C min.	AXUT2	UL
Appliance Inlet (For Models GT-41132-WVVV-X.X-T3)	Tecx-Unions Technology Corp	TU-301-SP	Rated 250Vac, 15A, 105 degree C min.	AXUT2	UL
Appliance Inlet (For Models GT-41132-WVVV-X.X-T3) (Alternate)	Supercom Wire & Cable Co Ltd	SC-8R Series	Rated 250Vac, 15A, 75 degree C min.	AXUT2	UL
Appliance Inlet (For Models GT-41132-WVVV-X.X-T3) (Alternate)	Sun Fair Electric Wire & Cable (HK) Co Ltd	S-03	Rated 250Vac, 10A, 75 degree C min.	AXUT2	UL
Appliance Inlet (For Models GT-41132-WVVV-X.X-T3) (Alternate)	Yueqing Leci Electronics Co Ltd	DB-14	Rated 250Vac, 15A, 75 degree C min.	AXUT2	UL

Object/part or Description	Manufacturer/ trademark	type/model	technical data	CCN	Marks of Conformity
Fuse (FS1)	Various	Various	Listed, T3.15A, 250Vac	JDYX	UL
Fuse (FS1) (Alternate)	Conquer Electronics Co Ltd	MST	Rated T3.15A, 250Vac.	JDYX2	UL
Fuse (FS1) (Alternate)	Ever Island Electric Co Ltd & Walter Electric	2010	Rated T3.15A, 250Vac.	JDYX2	UL
Fuse (FS1) (Alternate)	COOPER BUSSMANN INC	SS-5	Rated T3.15A, 250Vac.	JDYX2	UL
Fuse (FS1) (Alternate)	Bel Fuse Inc	RST	Rated T3.15A, 250Vac.	JDYX2	UL
Fuse (FS1) (Alternate)	Hollyland Co Ltd	5ET	Rated T3.15A, 250Vac.	JDYX2	UL
Varistor (MOV1) (Optional)	Various	Various	Rated min 320 Vac, min 410 Vdc.	VZCA2	UL
Line choke (LF1) (Optional)	--	--	See enclosure 4-02 for details, 130 degree C minimum.	--	--
- Core	--	--	See enclosure 4-02 for dimension details	--	--
- Coil	Various	Various	130 degree C, ANSI TYPE MW28 or MW75 or MW79 or MW80	OBMW2	UL
- Triple Insulated Wire	Various	Various	130 degree C	OBJT2	UL
Line choke (LF2) (Optional)	--	--	See enclosure 4-03 for details, 130 degree C minimum.	--	--
- Core	--	--	See enclosure 4-03 for dimension details	--	--
- Coil	Various	Various	130 degree C, ANSI TYPE MW28 or MW75 or MW79 or MW80	OBMW2	UL
Bridge Diode (BD1)	--	--	Rated 4A, minimum 600 V.	--	--
Bleeder Resistor (RS1, RS2)	--	--	Rated maximum 1.5M ohm, 1/4W, SMD type	--	--
Thermistor (THR1) (Optional)	--	--	Rated max. 5 A, min.2.5 ohm, at 25 degree C	--	--
Storage Capacitor (C1)	--	--	Rated 400 V, max. 120uf, min. 105 degree C, provided with integral pressure relief	--	--
Transistor (Q1)	--	--	Rated 10A, minimum 600 V.	--	--
Current sense resistor (R1)	--	--	0.36ohm, 2W.	--	--
Semiconductor IC (US1)	--	--	Rated 30V, 2.3mA.	--	--
X-Capacitor (CX1)	Cheng Tung	CTX	Rated max 0.33 uF, min 250 V, X1 or X2 type, 100	FOWX2	UL

Object/part or Description	Manufacturer/ trademark	type/model	technical data	CCN	Marks of Conformity
(Optional)	Industrial Co Ltd		degree C. (Compliance with IEC 60384-14)		
X-Capacitor (CX1) (Optional) (Alternate)	Tenta Electric Industrial Co Ltd	MEX	Rated max 0.33 uF, min 250 V, X1 or X2 type, 100 degree C. (Compliance with IEC 60384-14)	FOWX2	UL
X-Capacitor (CX1) (Optional) (Alternate)	Ultra Tech Xiphi Enterprise Co Ltd	HQX	Rated max 0.33 uF, min 250 V, X1 or X2 type, 100 degree C. (Compliance with IEC 60384-14)	FOWX2	UL
X-Capacitor (CX1) (Optional) (Alternate)	CARLI ELECTRONICS CO LTD	MPX	Rated max 0.33 uF, min 250 V, X1 or X2 type, 100 degree C. (Compliance with IEC 60384-14)	FOWX2	UL
Y capacitor (CY1) (Optional)	Success Electronics Co Ltd	SE	Max. 2200pF, min. 250 Vac, 85 degree C, Y1 type. (Compliance with IEC 60384-14)	FOWX2	UL
Y capacitor (CY1) (Optional) (Alternate)	TDK Corp	CD	Max. 2200pF, min. 250 Vac, 85 degree C, Y1 type. (Compliance with IEC 60384-14)	FOWX2	UL
Y capacitor (CY1) (Optional) (Alternate)	Walsin Technology Corp	AH	Max. 2200pF, min. 250 Vac, 85 degree C, Y1 type. (Compliance with IEC 60384-14)	FOWX2	UL
Y capacitor (CY1) (Optional) (Alternate)	Haohua Electronic Co	CT 7	Max. 2200pF, min. 250 Vac, 85 degree C, Y1 type. (Compliance with IEC 60384-14)	FOWX2	UL
Optical Isolators (U1)	Lite-On Technology Corp	LTV-817	Isolation: 5000 Vac, minimum. 0.4 mm distance through insulation, minimum 100 degree C.	FPQU2	UL
Optical Isolator (U1) (Alternate)	Everlight Electronics Co Ltd	EL817	Isolation: 5000 Vac, minimum. 0.4 mm distance through insulation, minimum 100 degree C.	FPQU2	UL
Optical Isolator (U1) (Alternate)	COSMO ELECTRONICS CORP	K1010	Isolation voltage minimum 3000 Vac, minimum 100 degree C.	FPQU2	UL
Transformer (T1) (For Models GT-41132-6012- T3, GT-41132-6012- T3A)	Electric Co., Ltd.	XF00623	See below	--	--
Transformer (T1) (For Models GT-41132-6024- 5.0-T3, GT-41132-6024- T3, GT-41132-6024-5.0- T3A, GT-41132-6024- T3A)	Electric Co., Ltd.	XF00624	See below	--	--
- Insulation system for Transformer (T1)	Electric Co., Ltd.	130-1	Insulation system Class B (130 degree C)	OBJY2	UL
- Core	--	--	EE type, Ferrite, dimension 22.7mm by 6.5mm by	--	--

Object/part or Description	Manufacturer/ trademark	type/model	technical data	CCN	Marks of Conformity
			19.6mm		
- Coil	Various	Various	130 degree C, ANSI TYPE MW28 or MW75 or MW79 or MW80	OBMW2	UL
- Bobbin	Chang Chun Plastics Co., Ltd.	T375J	V-0, 150degree C, Phenolic, thickness 0.8mm minimum	QMFZ2	UL
- Bobbin (Alternate)	SUMITOMO BAKELITE CO LTD	PM-9820	V-0, 150degree C, Phenolic, thickness 0.71mm minimum	QMFZ2	UL
- Tubing/Sleeving	Great Holding Industrial Co. Ltd.	TFL, TFS, TFT	Rated 200 degree C, 600V max.	YDPU2	UL
- Triple Insulated Wire	Great Leoflon Industrial Co. Ltd.	TRW(B)	130 degree C	OBJT2	UL
- Varnish	John C. Dolph Co.	BC-346A	Rated minimum 200 degree C.	OBOR2	UL
- Varnish (Alternate)	P D GEORGE/VIKING	V1630FS	Rated minimum 130 degree C.	OBOR2	UL
- Insulation Tape	3M Company	1350T-1	130 degree C.	OANZ2	UL
- Insulation Tape (Alternate)	3M Company	1350F(#)	130 degree C.	OANZ2	UL
- Insulation Tape (Alternate)	3M Company	44	130 degree C.	OANZ2	UL
- Insulation Tape (Alternate)	Bondtec Pacific Co., Ltd.	370S	130 degree C.	OANZ2	UL
Internal Glue Materials	Various	Various	Rated V-2 minimum.	QMFZ2	UL
Internal Plastic Part Materials	--	--	Rated minimum V-2.	QMFZ2	UL
Output cord	Various	Various	Minimum 300 V, 80 degree C, maximum 3.05 m, marked VW-1 or FT-1.	AVLV2, ZJCZ	UL
PWB	Various	Various	V-1 or better, minimum 130 degree C.	ZPMV2	UL
Label	Various	Various	Minimum 95 degree C. if maximum surface temperature not specified.	PGDQ2, PGJI2	UL
Power supply cord (Optional)	Various	Various	Detachable, max. 4.5 m (14.76 ft.) long, min. 1.5m, Type SVT or SJT or SPT-2 flexible cord, rated min. 125 V if one end terminated in NEMA 5-15P grounding type attachment plug; rated minimum 250 V if one end terminated in NEMA 6-15P grounding type attachment plug, the other end in an	ZJCZ and RTRT and AXUT, or ELBZ	UL

Object/part or Description	Manufacturer/ trademark	type/model	technical data	CCN	Marks of Conformity
			appliance coupler.		
Heat Sink (HS1)	--	--	Aluminum, see enclosure 4-06 for details.	--	--
Heat Sink (HS2)	--	--	Aluminum, see enclosure 4-07 for details.	--	--
Insulation Tubing (on HS2)	Changyuan Electronics (Shenzhen) Co Ltd	CB-HFT	FEP, PTFE, PVC, TFE, neoprene, polyimide or marked VW-1; min. 300 V, 105 degree C, thickness 0.4 mm minimum., see enclosure 4-07 for details.	YDPU2	UL
Insulation Tubing (on HS2) (Alternate)	Dongguan Salipt Co Ltd	SALIPT S-901	FEP, PTFE, PVC, TFE, neoprene, polyimide or marked VW-1; min. 300 V, 105 degree C, thickness 0.4 mm minimum., see enclosure 4-07 for details.	YDPU2	UL
Insulation Tubing (on HS2) (Alternate)	Qifurui Electronics Co	QFR-PVC-300, QFR-PVC-600	FEP, PTFE, PVC, TFE, neoprene, polyimide or marked VW-1; min. 300 V, 105 degree C, thickness 0.4 mm minimum., see enclosure 4-07 for details.	YDPU2	UL
Insulation Tubing (on HS2) (Alternate)	Guangzhou Kaiheng Enterprise Group	K-2	FEP, PTFE, PVC, TFE, neoprene, polyimide or marked VW-1; min. 300 V, 105 degree C, thickness 0.4 mm minimum., see enclosure 4-07 for details.	YDPU2	UL
Insulation Tape (on HS2)	3M Company	1350T-1	130 degree C, see enclosure 4-07 for details.	OANZ2	UL
Insulation Tape (on HS2) (Alternate)	3M Company	1350F(#)	130 degree C, see enclosure 4-07 for details.	OANZ2	UL
Insulation Tape (on HS2) (Alternate)	3M Company	44	130 degree C, see enclosure 4-07 for details.	OANZ2	UL
Insulation Tape (on HS2) (Alternate)	Bondtec Pacific Co., Ltd.	370S	130 degree C, see enclosure 4-07 for details.	OANZ2	UL
Mylar sheet (Between PWB Solder side and Metal foil)	FORMEX,DIV OF IL TOOL WORKS INC,FRMRLY FASTEX,DIV OF IL TOOL WORKS INC	FORMEX GK	Rated VTM-0 minimum, 0.45mm minimum thickness, see enclosure 4-08 for details.	QMFZ2	UL
Mylar Sheet (Between PWB Solder side and Metal foil) (Alternate)	SKC CO LTD	SH71S	Rated VTM-2 minimum, 0.45mm minimum thickness, see enclosure 4-08 for details.	QMFZ2	UL
Mylar Sheet (Between PWB Solder side and Metal foil) (Alternate)	TSAO RU CO LTD	PP-TR45	Rated V-0 minimum, 0.45mm minimum thickness, see enclosure 4-08 for details.	QMFZ2	UL
Mylar Sheet (Between PWB Solder side and Metal foil) (Alternate)	MIANYANG LONGHUA FILM CO LTD	PP-WT16	Rated V-0 minimum, 0.45mm minimum thickness, see enclosure 4-08 for details.	QMFZ2	UL

Object/part or Description	Manufacturer/ trademark	type/model	technical data	CCN	Marks of Conformity
Metal foil	--	--	Iron, see enclosure 4-08 for details.	--	--

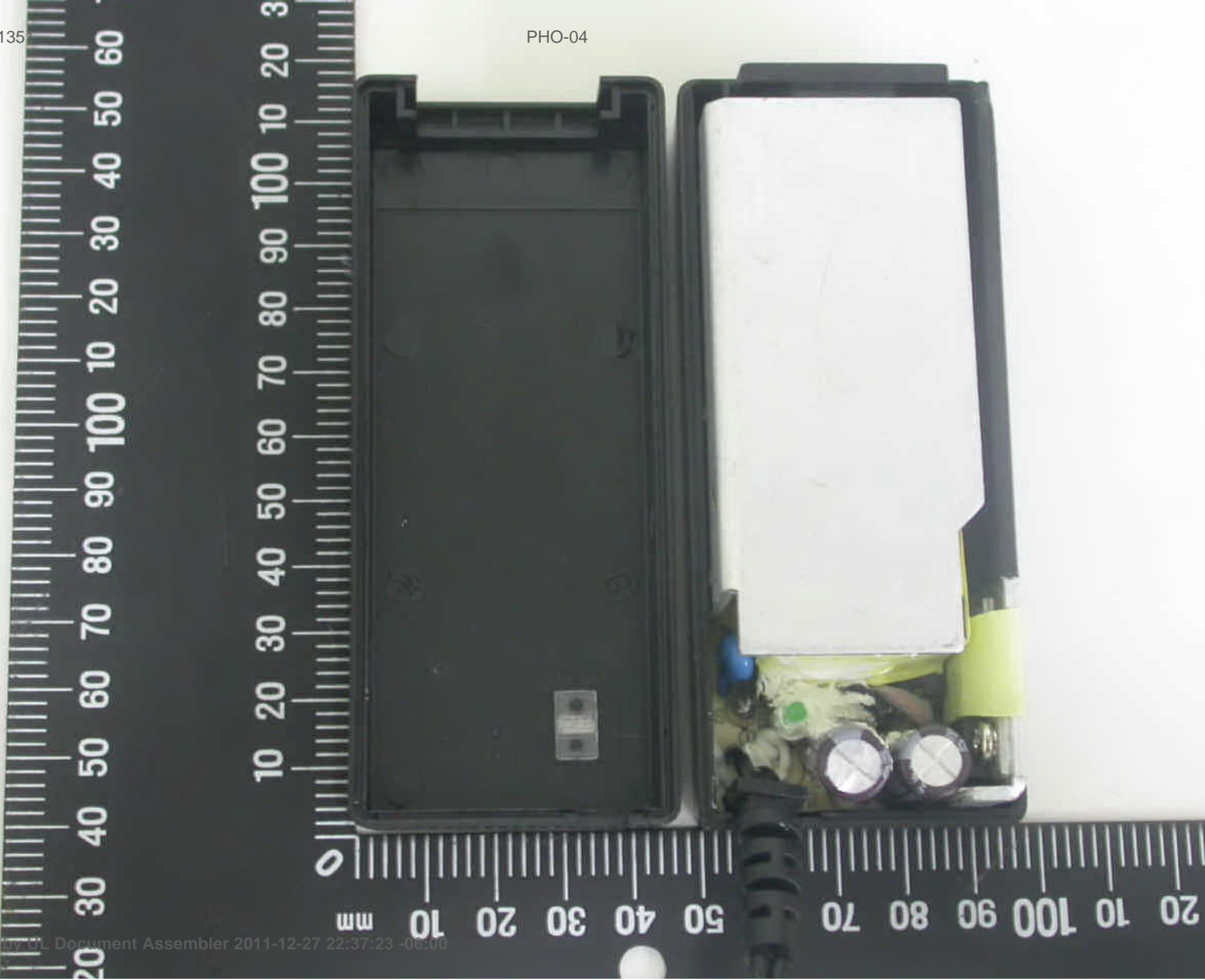
Enclosures

<u>Type</u>	<u>Supplement Id</u>	<u>Description</u>
Photographs	3-01	Overall View - 1 (for Model GT-41132-WWVV-X.X-T3)
Photographs	3-02	Overall View - 2 (for Model GT-41132-WWVV-X.X-T3A)
Photographs	3-03	Overall View - 3
Photographs	3-04	Internal View - 1
Photographs	3-05	Internal View - 2
Photographs	3-06	Component side of PWB
Photographs	3-07	Solder side of PWB
Diagrams	4-01	Enclosure Dimension
Diagrams	4-02	Line choke (LF1)
Diagrams	4-03	Line choke (LF2)
Diagrams	4-04	Transformer (T1) (P/N: XF00623) for Models GT-41132-6012-T3 and GT-41132-6012-T3A
Diagrams	4-05	Transformer (T1) (P/N: XF00624) for Models GT-41132-6024-5.0-T3, GT-41132-6024-T3, GT-41132-6024-5.0-T3A and GT-41132-6024-T3A
Diagrams	4-06	Heat Sink (HS1)
Diagrams	4-07	Heat Sink (HS2) with Tubing and Tape
Diagrams	4-08	Mylar Sheet (Between PWB Solder side and Metal foil)
Schematics + PWB	5-01	PWB Layout
Manuals		
Miscellaneous	7-01	Model difference list

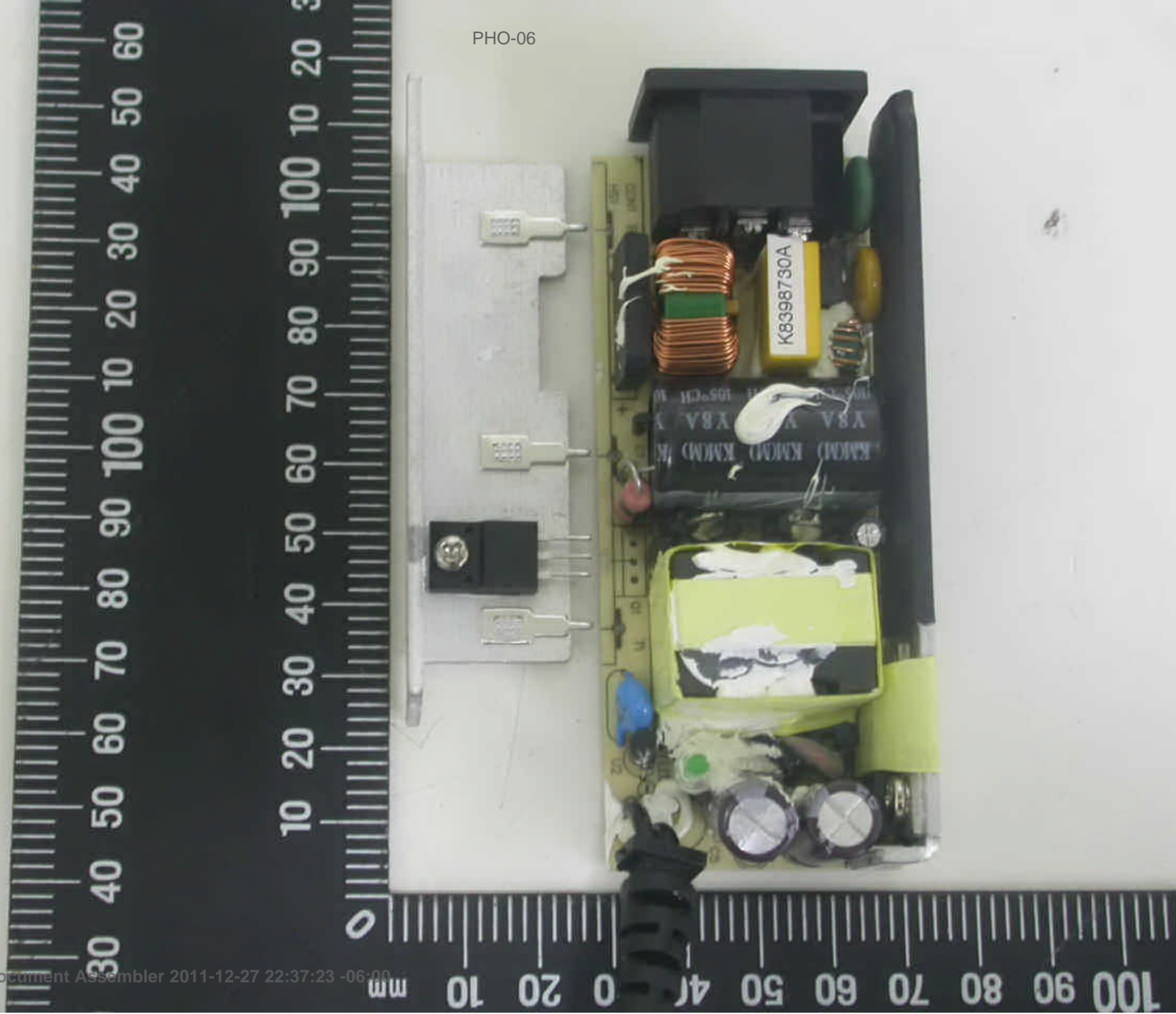


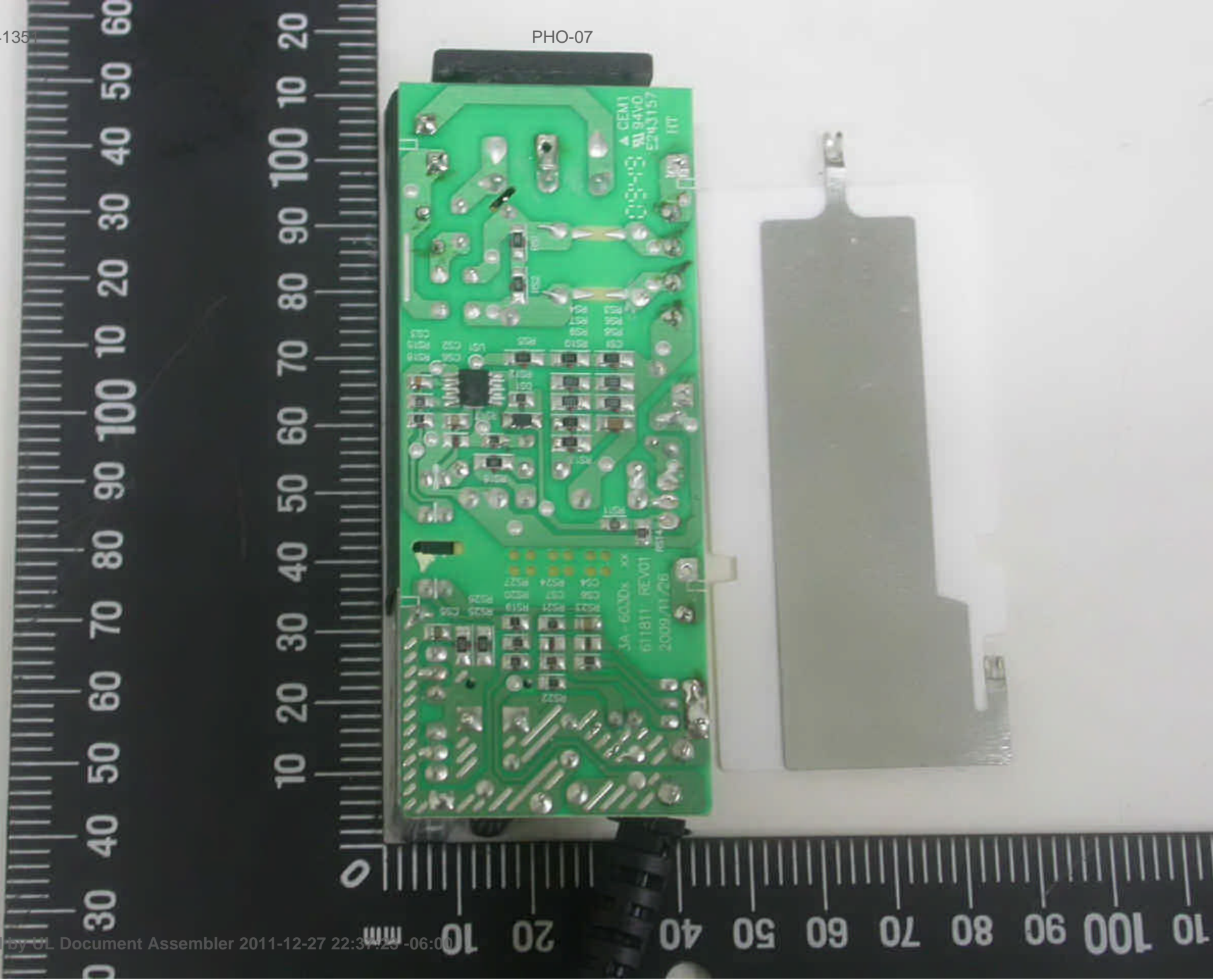




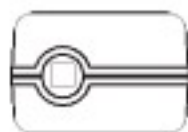
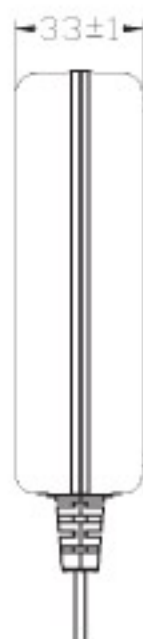
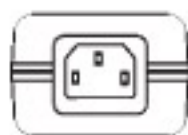









Att. 2

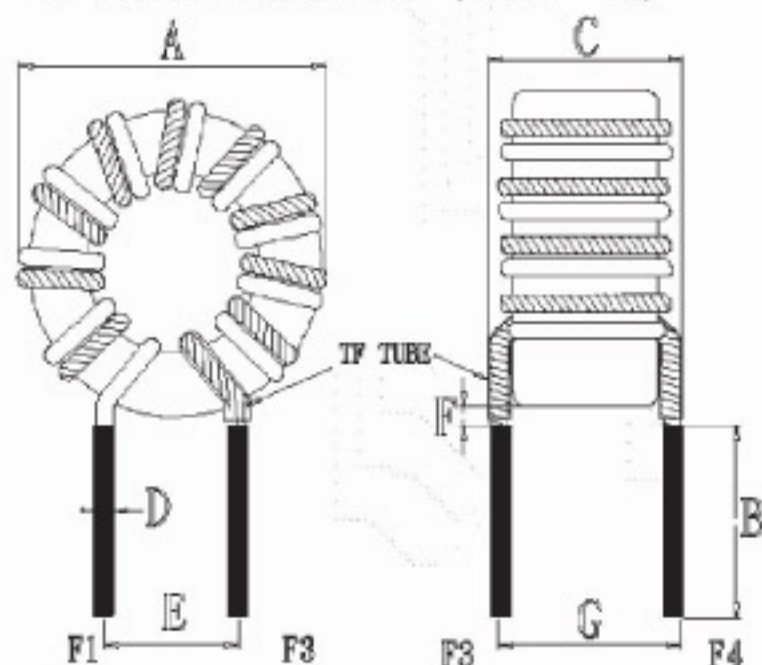


TOLERANCE

DESIGNED	CHECKED	APPROVED			TITLE	DATE
					OUTDRAWING	
<i>River_xiao</i>	<i>Xiongiao_yang</i>	<i>Xingiao_chen</i>	UNITS	mm	DRAWING No.	
			SCALE	1:1	@3A-603DBXX	2009-11-12
					DRAWING NAME	REVISION
					XXXXXX	01

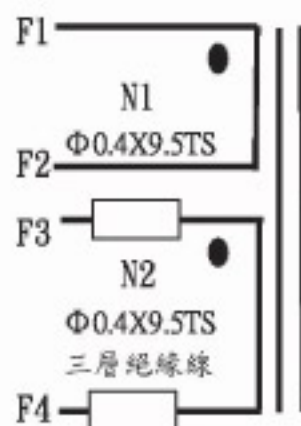
SPECIFICATION

1. OUTLINE DIMENSION: (UNIT: mm)



A	13.0 Max
B	15.0 ± 2.0
C	9.0 Max
D	0.4 ± 0.1
E	3.5 ± 0.5
F	1.2 Max
G	6.0 ± 0.5

2. SCHEMATIC:



NOTE:

1. 圈數以外圈計算.
2. 繞線須平整, 銅線漆包膜不可破損或脫落
3. 產品須含浸.
4. N2使用三層絕緣線, 須先脫皮再鍍錫, 且進出線須穿TF TUBE.

● START

□ TF TUBE

N1, N2雙組並繞

3. ELECTRICAL CHARACTERISTIC: (電器特性)

1) TEST CONDITION: TEMPERATURE AT 25°C

INDUCTANCE: L(F1-F2): 88.0 μ H Min(at 10Khz, 0.25V), DCR 32.7m Ω Max.INDUCTANCE: L(F3-F4): 88.0 μ H Min(at 10Khz, 0.25V), DCR 32.7m Ω Max.

2) HI-POT TEST:

COIL. TO COIL. ----- AC 0.5KV/(50/60Hz)/5mA/60sec

COIL. TO CORE. ----- AC 0.5KV/(50/60Hz)/5mA/60sec

DESCRIPTION

CHOKE

Customer P/N

NF00025

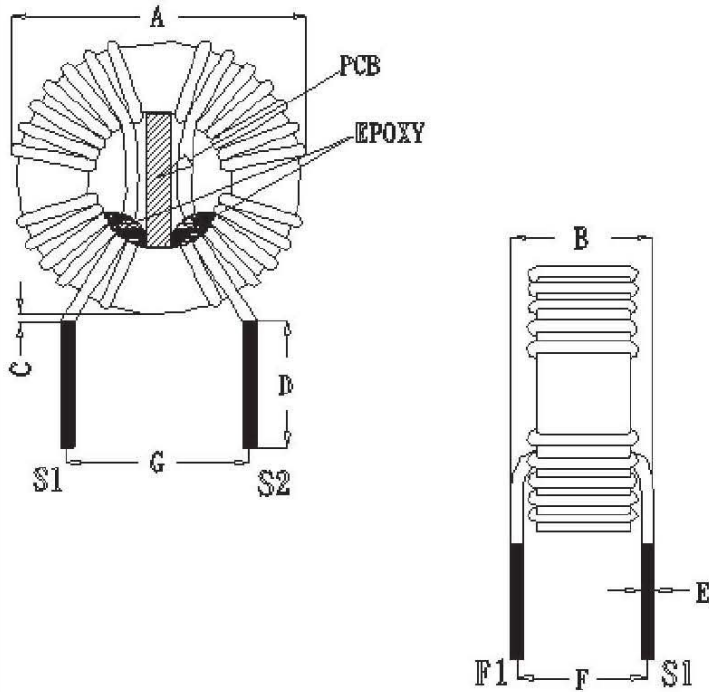
DATE

2008/1/23

RDS041.0307

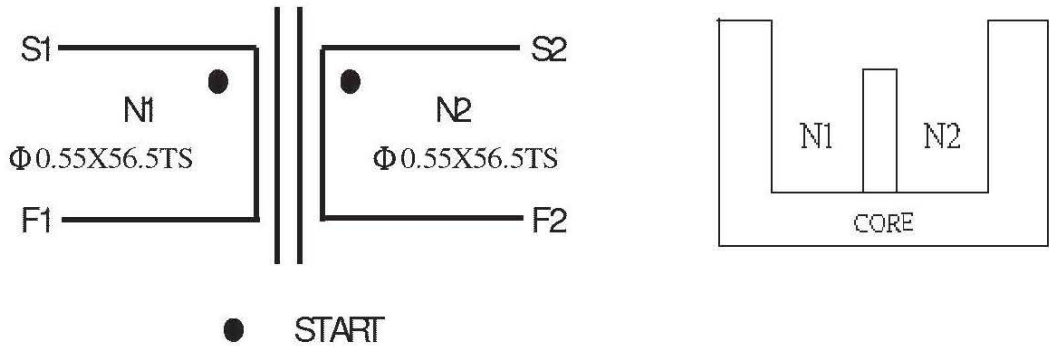
SPECIFICATION

1. OUTLINE DIMENSION (UNIT: mm)



A	21.5 Max
B	14.0 Max
C	1.0 Max
D	15.0 ±1.0
E	0.55 ±0.1
F	11.0 ±1.0
G	9.5 ±1.0

2. SCHEMATIC



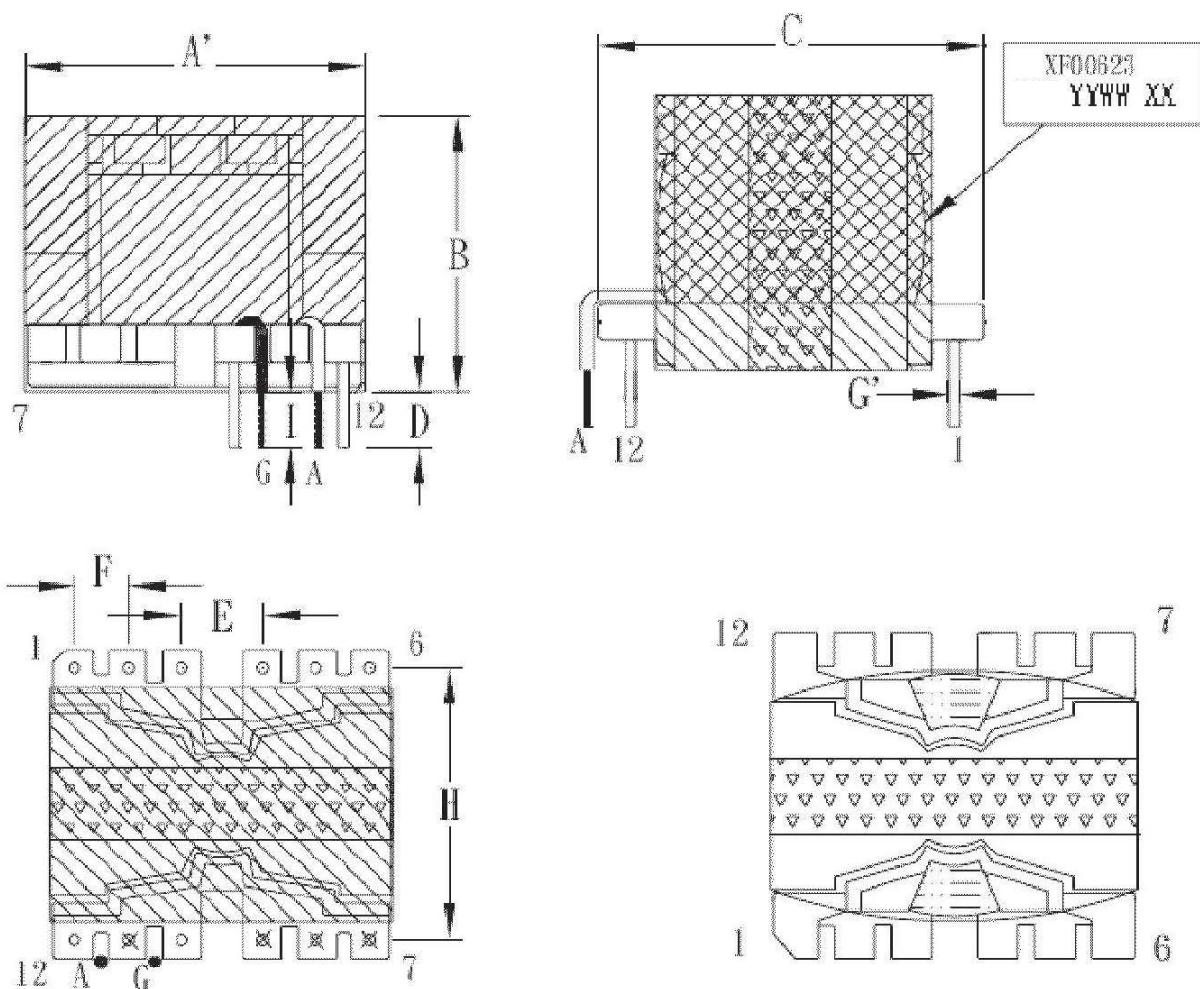
3. ELECTRICAL CHARACTERISTICS (電器特性)

- 1) TEST CONDITION: TEMPERATURE AT 25°C
INDUCTANCE: L(S1-F1): 10.0 mH Mn(at 10Khz, 0.25V), DCR 130.0mΩ Max.
INDUCTANCE: L(S2-F2): 10.0 mH Mn(at 10Khz, 0.25V), DCR 130.0mΩ Max.
- 2) HI-POT TEST:
COIL TO COIL: AC 0.5KV/ (50/60Hz) / 5mA/ 60sec
COIL TO CORE: AC 0.5KV/ (50/60Hz) / 5mA/ 60sec

DESCRIPTION	CHKE	Customer P/N	NF00031	DATE	2009/ 1/ 20
-------------	------	--------------	---------	------	-------------

SPECIFICATION

1. OUTLINE DIMENSION: (UNIT: mm)



NOTE:

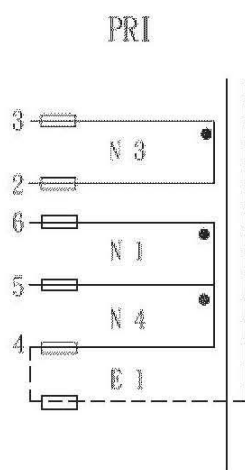
- 1) XX Indicate the Factory ID;
YY Provides production year;
WW Provides production week.
- 2) PIN7, 8, 9, 11 CUT OFF. PIN5 CUT OFF 1/2.
- 3) PIN端CORE須用 3M 1350F-1*1L膠帶加工 (如後圖示), CORE TAPE UL(Y)3TS沿CORE包U型TAPE 3M 1350F-1 24mm*2L(頂部不包)包成品線包外圍TAPE 15.0mm UL(Y) 3TS.
- 4) 飛線成型以實合PCB 板為準.
- 5) 標籤貼於PIN1~6 側線包上, 字體朝PIN. 外觀圖中 "C" 項尺寸指BOBBIN 尺寸.

DIM	A'	B	C	D	E	F	G'	H	I	
	MAX	MAX	MAX	±0.3	±0.5	±0.5	±0.1	±0.5	±1.0	
SPEC	29	21	31	3	7.6	3.8	0.6	25.4	5	
DESCRIPTION	TRANSFORMER		Customer P/N				XF00623		DATE	2010/1/29

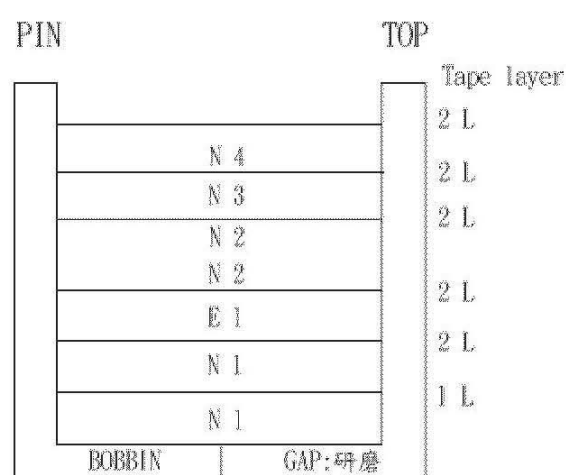
RDS041.0307

SPECIFICATION

2. SCHEMATIC:



3. WINDING SEQUENCE:



4. WINDING TABLE

Winding No (組別)	Margin Tape (檔牆膠帶)	PIN (腳位)	Wire&Wire Copper (線徑X股數)	Turns (圈數)	Winding Tape (繞線方式)	Tape Layer (膠帶層次)	Tube (套管)
N1	0	6~5	0.32ΦX2P	25Ts	密繞	2L	22*15/22*12
E1	0	~4	0.025*8mm	1.1Ts	背膠	2L	0*26/15*0
N2	0	A~G	0.50ΦX5P (三層絕緣線)	4Ts	密繞	2L	12*25(透明)/ 12*25(黑色)
N3	0	3~2	0.25ΦX2P	5Ts	疏繞	2L	24*11/24*11
N4	0	5~4	0.30ΦX2P	11Ts	密繞	2L	23*11/23*11

NOTE:

- 1.) 繞線時, PIN1 朝內插. 不加MARGIN TAPE, 進出線均須加TF TUBE.
- 2.) N1 為密繞佔兩層, 層間須層隔.
- 3.) E1 為內銅箔(背膠), 焊點位於中間, 接引線0.3φ*1P.
- 4.) N2 為密繞, 佔二層, 層間不須層隔, 且使用三層絕緣線繞製, 須先脫皮再鍍錫. A, G均為飛線,
A穿透明TF TUBE 從PIN11~12 間凹槽進線, G穿黑色TF TUBE 從PIN10~11間凹槽出線.
- 5.) N3 為疏繞佔一層.
- 6.) N4 為密繞佔一層.

DESCRIPTION	TRANSFORMER	Customer P/N	XF00623	DATE	2010/1/29
-------------	-------------	--------------	---------	------	-----------

SPECIFICATION

5. ELECTRICAL CHARACTERISTIC: (電器特性)

TEST CONDITION : TEMPERATURE AT 25 °C @1KHz, 0.3V

TEST POINT	INDUCTANCE(L)	LK	DCR	TEST INSTRUMENT
6-4	720uH±5%	15.0uH Max (short other pin)	0.3Ω MAX	WK---4235
A-G	9.0uH+/-30%		6.0mΩ MAX	WK---4235
3-2	14.0uH+/-30%		70.0mΩ MAX	WK---4235

1) HI-POT TEST:(WK-7620)

PRI. TO SEC. -----AC 3.0KV/(50/60Hz)/5mA/60sec.

PRI. TO CORE. -----AC 1.5KV/(50/60Hz)/5mA/60sec.

SEC. TO CORE. -----AC 1.5KV/(50/60Hz)/5mA/60sec.

2) A.R.C TEST:(WK7620)

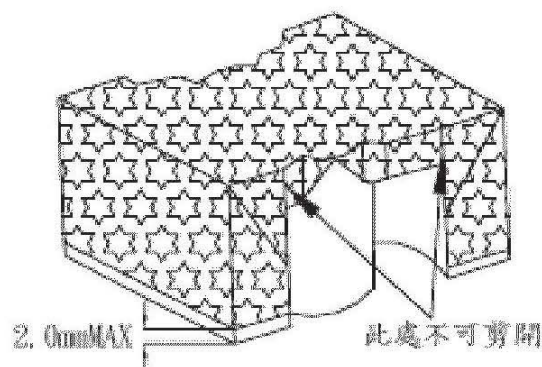
PRI. TO SEC. -----AC 3.0KV/(50/60Hz)/12mA/1sec.

3) INSULATION TEST:(DC 500V)

BETWEEN PRI. TO SEC. & PRI. TO CORE AND SEC. TO CORE THE
RESISTANCE MORE 100M ohm.

4) TERMINAL STRENGTH:

1.0 Kg on terminals for 30seconds, test the breakdown.

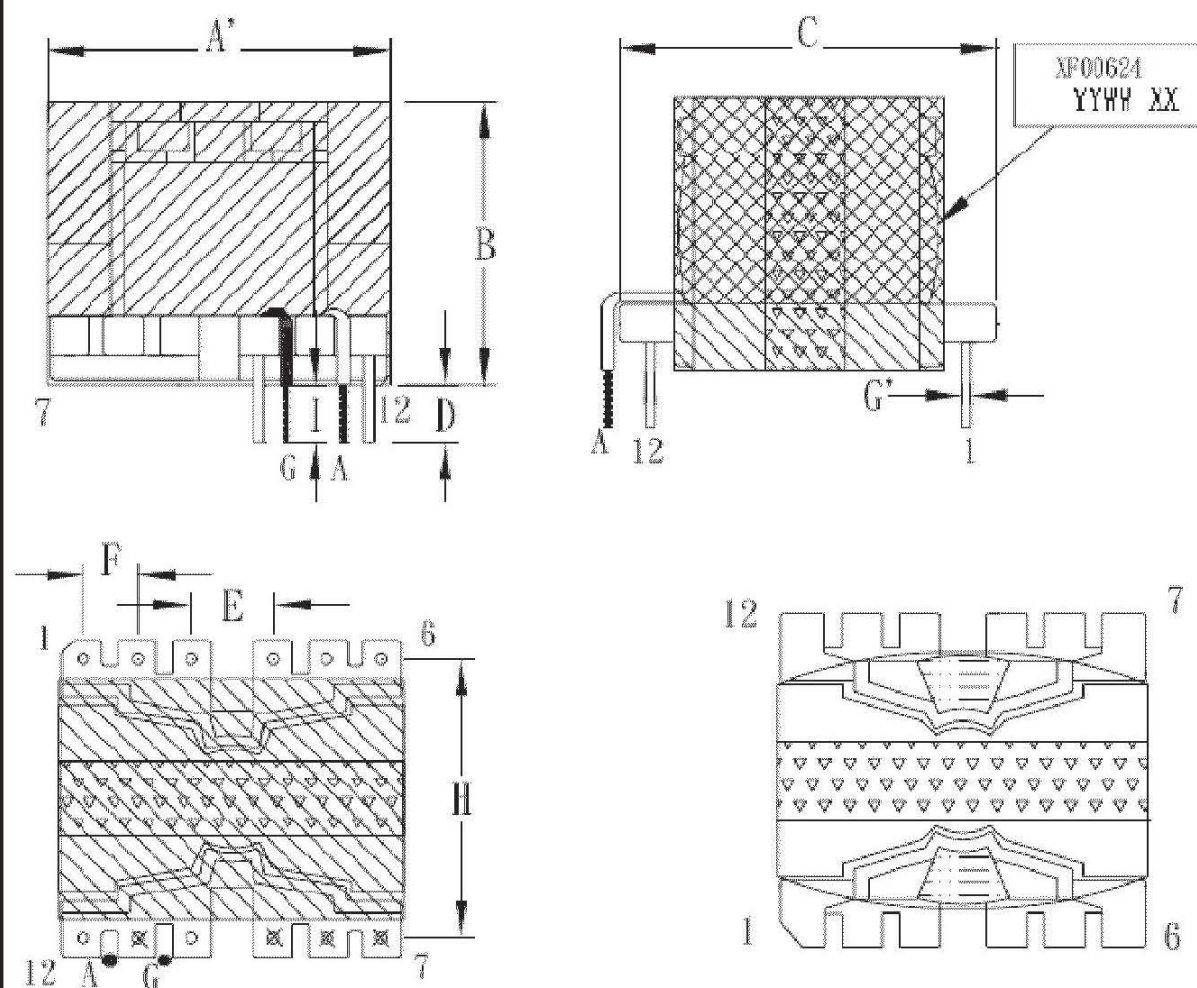


DESCRIPTION	TRANSFORMER	Customer P/N	XF00623	DATE	2010/1/29
-------------	-------------	--------------	---------	------	-----------

RDS041.0307

SPECIFICATION

1. OUTLINE DIMENSION: (UNIT: mm)



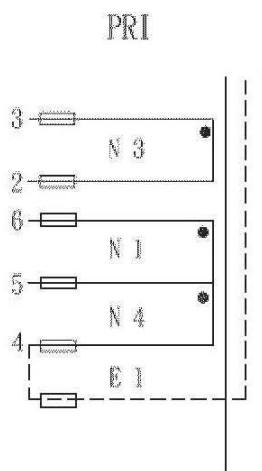
NOTE:

- 1) XX Indicate the Factory ID;
YY Provides production year;
WW Provides production week.
- 2) PIN7, 8, 9, 11 CUT OFF. PIN5 CUT OFF 1/2.
- 3) PIN端CORE須用 3M 1350F-1*1L膠帶加工 (如後圖示), CORE TAPE UL(Y)3TS沿CORE包U型TAPE 3M 1350F-1 24mm*2L(頂部不包)包成品線包外圍TAPE 15.0mm UL(Y) 3TS.
- 4) 飛線成型以實合PCB 板為準.
- 5) 標籤貼於PIN1~6 側線包上, 字體朝PIN. 外觀圖中 "C" 項尺寸指BOBBIN 尺寸.

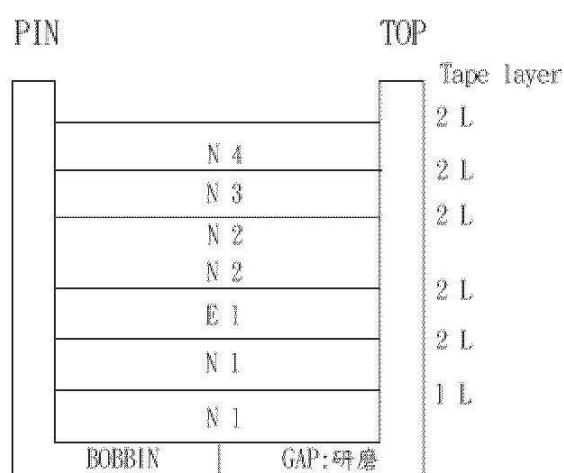
DIM	A'	B	C	D	E	F	G'	H	I	
	MAX	MAX	MAX	±0.3	±0.5	±0.5	±0.1	±0.5	±1.0	
SPEC	29	21	31	3.5	7.6	3.8	0.6	25.4	5	
DESCRIPTION	TRANSFORMER		Customer P/N				XF00624		DATE	2010/1/29

SPECIFICATION

2. SCHEMATIC:



3. WINDING SEQUENCE:



4. WINDING TABLE

Winding No (組別)	Margin Tape (檔牆膠帶)	PIN (腳位)	Wire&Wire Copper (線徑X股數)	Turns (圈數)	Winding Tape (繞線方式)	Tape Layer (膠帶層次)	Tube (套管)
N1	0	6~5	0.32ΦX2P	25Ts	密繞	2L	22*15/22*12
E1	0	~4	0.025*8mm	1.1Ts	背膠	2L	0*26/15*0
N2	0	A~G	0.55ΦX3P (三層絕緣線)	6Ts	密繞	2L	14*25(透明)/ 14*25(黑色)
N3	0	3~2	0.25ΦX2P	5Ts	疏繞	2L	24*11/24*11
N4	0	5~4	0.30ΦX2P	11Ts	密繞	2L	23*11/23*11

NOTE:

- 1.) 繞線時, PIN1 朝內插. 不加MARGIN TAPE, 進出線均須加TF TUBE.
- 2.) N1 為密繞佔兩層, 層間須層隔.
- 3.) E1 為內銅箔(背膠), 焊點位於中間, 接引線0.3Φ*1P.
- 4.) N2 為密繞, 佔二層, 層間不須層隔, 且使用三層絕緣線繞製, 須先脫皮再鍍錫. A, G均為飛線,
A穿透明TF TUBE 從PIN11~12 間凹槽進線, G穿黑色TF TUBE 從PIN10~11間凹槽出線.
- 5.) N3 為疏繞佔一層.
- 6.) N4 為密繞佔一層.

DESCRIPTION	TRANSFORMER	Customer P/N	XF00624	DATE	2010/1/29
-------------	-------------	--------------	---------	------	-----------

SPECIFICATION

5. ELECTRICAL CHARACTERISTIC: (電器特性)

TEST CONDITION : TEMPERATURE AT 25 °C @1KHz, 0.3V

TEST POINT	INDUCTANCE(L)	LK	DCR	TEST INSTRUMENT
6-4	720uH±5%	18.0uH Max (short other pin)	0.3Ω MAX	WK---4235
A-G	14.0uH+/-30%		70.0mΩ MAX	WK---4235
3-2	20.0uH+/-30%		11.0mΩ MAX	WK---4235

1) HI-POT TEST:(WK-7620)

PRI. TO SEC. -----AC 3.0KV/(50/60Hz)/5mA/60sec.

PRI. TO CORE. -----AC 1.5KV/(50/60Hz)/5mA/60sec.

SEC. TO CORE. -----AC 1.5KV/(50/60Hz)/5mA/60sec.

2) AR. C TEST:(WK7620)

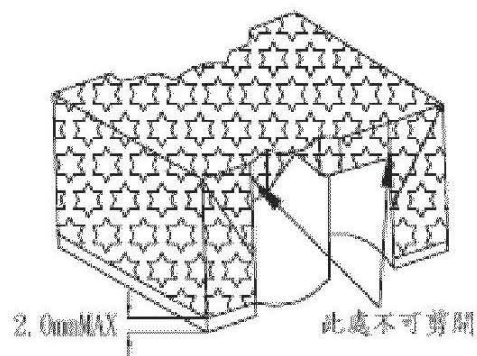
PRI. TO SEC. -----AC 3.0KV/(50/60Hz)/12mA/1sec.

3) INSULATION TEST:(DC 500V)

BETWEEN PRI. TO SEC. & PRI. TO CORE AND SEC. TO CORE THE
RESISTANCE MORE 100M ohm.

4) TERMINAL STRENGTH:

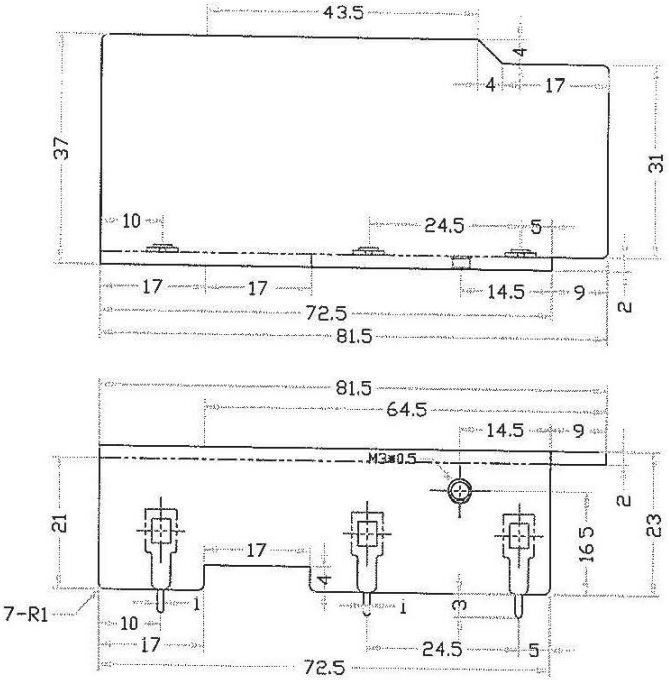
1.0 Kg on terminals for 30seconds.test the breakdown.



DESCRIPTION	TRANSFORMER	Customer P/N	XF00624	DATE	2010/1/29
-------------	-------------	--------------	---------	------	-----------

RDS041.0307

Att.



項次	變更記錄	備注
△		
△		
△		

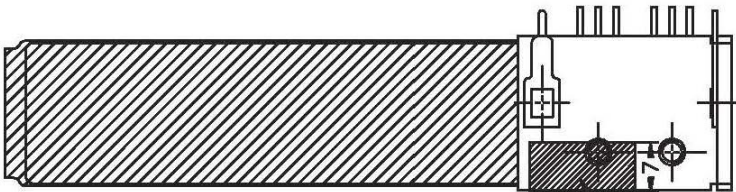
技术要求
1.材料:鋁材2.0mm.
2.表面須平整,光潔,不得有划傷和毛邊.
攻牙及通孔須雙面倒角。

DESIGNED	CHECKED	APPROVED		
Ruwu_xiao	Great_liu	Xinqiao_chen	UNITS	mm
			SCALE	1:1

TOLERANCE					
>100	70-100	40-70	10-40	10-Less	其他
+/-0.5	+/-0.3	+/-0.2	+/-0.15	+/-0.1	依照一般公差
TITLE					DATE
HS1					2009-11-04
DRAWING No.					REVISION
DRAWING NAME					1.0

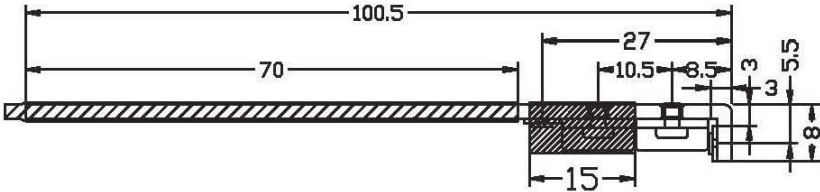
RDS-041 07.03

Att.

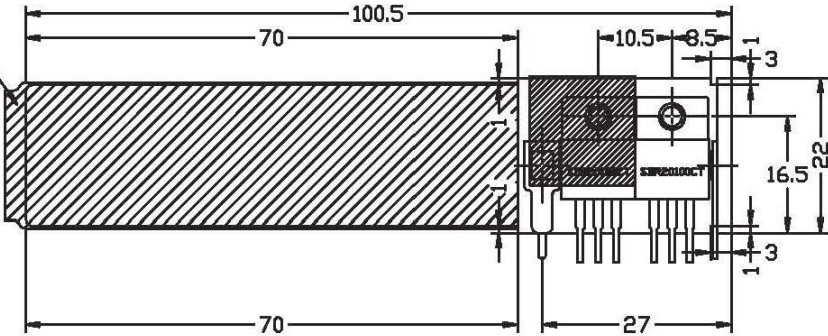


項次	變更記錄	備注
△	增加貼M TAPE 15*25mm	20100224
△		
△		

此處鎖付DIODE 是貼15*25mm #1350F-1 3M TAPE



Φ16*73*0.36 Tube



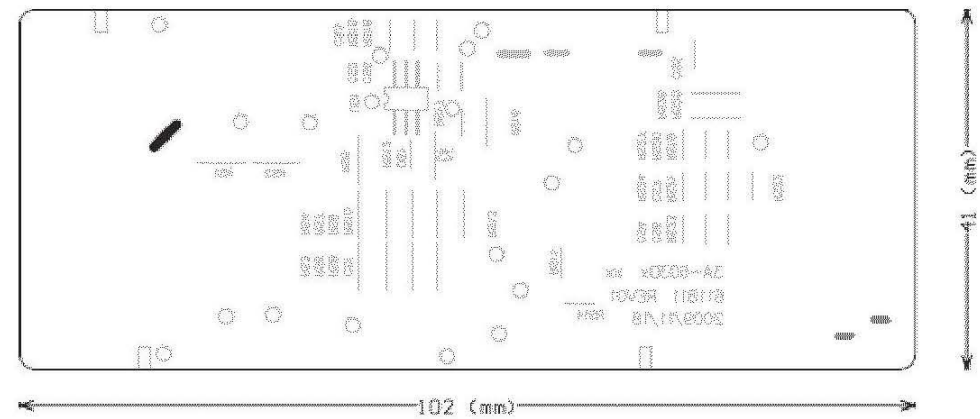
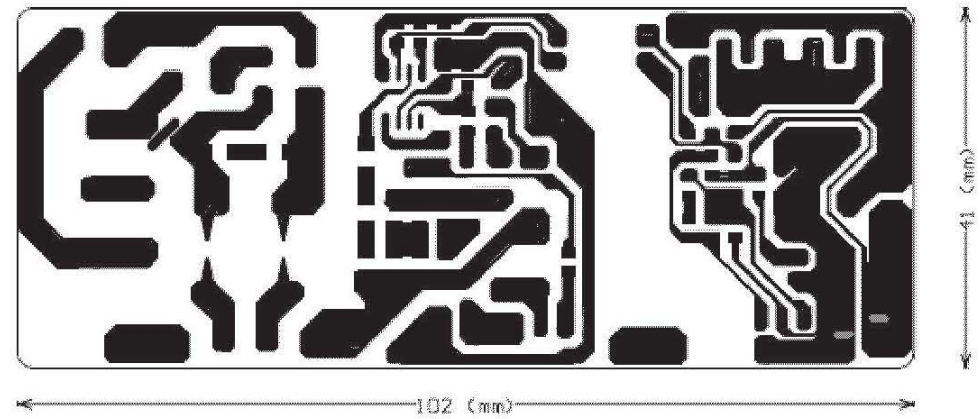
TOLERANCE					
>100	70-100	40-70	10-40	10-Less	其他
±0.5	±0.3	±0.2	±0.15	±0.1	依照一般公差
TITLE					DATE
HS2加套管/TAPE示意圖					2009-11-04
DRAWING No.					REVISION
DRAWING NAME					1.1


技术要求

- 1.材料:鋁材2.0mm,TUBE,3M 1350F-1.
- 2.表面須平整,光潔,不得有划傷和毛邊.
- 攻牙及通孔須雙面倒角。

DESIGNED	CHECKED	APPROVED		
Ruwu_xiao	Great_liu	Xinqiao_chen	UNITS	mm
			SCALE	1:1

PCB : CEM-1 / 1 OZ thickness 1.2mm



DESIGNED	CHECKED	APPROVED			TITLE: PCB	DATE
Ruwu_xiao	Xt_yang	Xinqiao_chen	UNITS	mm	DRAWING NO.	2010-01-21
			SCALE			
					DRAWING NAME:	REVISION
						01

Input Rating: Input Voltage: 100-240Vac
 Frequency: 50-60Hz
 Input Current: 1.5A

GT-41132-WWVV-X.X-TZ series Model Difference (Z=3 or 3A):

MODEL	INPUT (V)	OUTPUT		WATT (W)	Resistor		Diode	TRANSFORMER
		VOLTAGE (V)	CURRENT (A)		R21 (Ohm)	R24 (Ohm)		
GT-41132-6012-TZ	100-240	12	5	60	18.2K $\pm 1\%$	4.64K $\pm 5\%$	D3, D4	XF00623
GT-41132-6024-5.0-TZ	100-240	19	3.42	64.98	20.0K $\pm 1\%$	3.0K $\pm 5\%$	D4	XF00624
GT-41132-6024-TZ	100-240	24	2.7	64.8	38.3K $\pm 5\%$	4.62K $\pm 5\%$	D4	XF00624

Test Record No. 1

Tests on all models are not required due to transferring file from Applicant Globtek (Suzhou) Co Ltd., File E336418, Vol. X7, E336418-A38.